

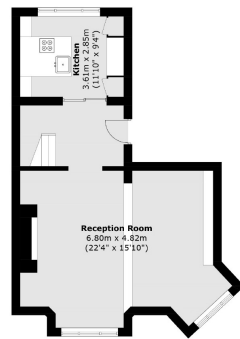


# GREEN STREET

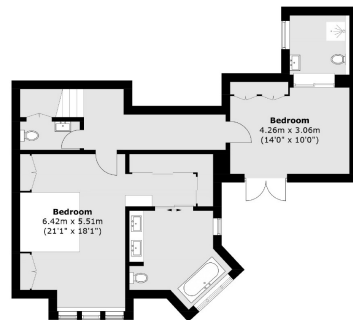
## MAYFAIR W1K



A STUNNING DUPLEX TWO BEDROOM, TWO BATHROOM PROPERTY, BENEFITTING FROM A SPACIOUS RECEPTION ROOM AND OPEN PLAN FULLY FITTED MODERN KITCHEN.



Ground Floor



Lower Ground Floor

Area (approx.): 123.7 sq. m (1,331.5 sq. ft)

The property has wooden flooring throughout and air conditioning. This flat is situated in the heart of Mayfair just a short walk from Hyde Park and Bond Street.

Green Street is situated between North Audley Street and Park Lane, and the property is located at the favoured Eastern end. It is well placed for access to the internationally renowned shops and restaurants of Mayfair.

#### FEATURES

- Two Double Bedrooms
- Two Modern Bathrooms
- Luxury Renovation
- Air Conditioning
- Courtyard
- Duplex Accommodation

Price: £1,850 Per week

We aim to make our particulars both accurate and reliable. However they are not guaranteed; nor do they form part of an offer or contract. If you require clarification on any points then please contact us, especially if you're traveling some distance to view. Please note that appliances and heating systems have not been tested and therefore no warranties can be given as to their working order. Energy Rating: D



**WETHERELL**  
MAYFAIR'S FINEST PROPERTIES

102 Mount Street • London • W1K 2TH  
T: 020 7529 5588 E: rentals@wetherell.co.uk

wetherell.co.uk

NO ONE KNOWS MAYFAIR BETTER THAN WETHERELL