



WETHERELL

MAYFAIR'S FINEST PROPERTIES



HILL STREET, W1J

£2,750,000

A well-presented two-bedroom apartment situated in a Grade II listed portered building with a share of the freehold.

This apartment of 1,022 sq. Ft is situated on the second floor of this well-run building. Spanning three windows across and facing onto Hill Street, it has a large, bright reception room with open plan kitchen and a modern breakfast bar offering ample entertaining space. The two double bedrooms are spacious with the principal benefiting from an en-suite bathroom and south facing aspect whilst the second bedroom has views onto Hill Street. The apartment is sold with the benefit of a parking space within a secure gated mews.

HILL STREET RUNS FROM SOUTH AUDLEY STREET THROUGH TO BERKELEY SQUARE AND IS ONLY MOMENTS FROM SCOTT'S AND THE BOUTIQUE SHOPS OF MOUNT STREET.

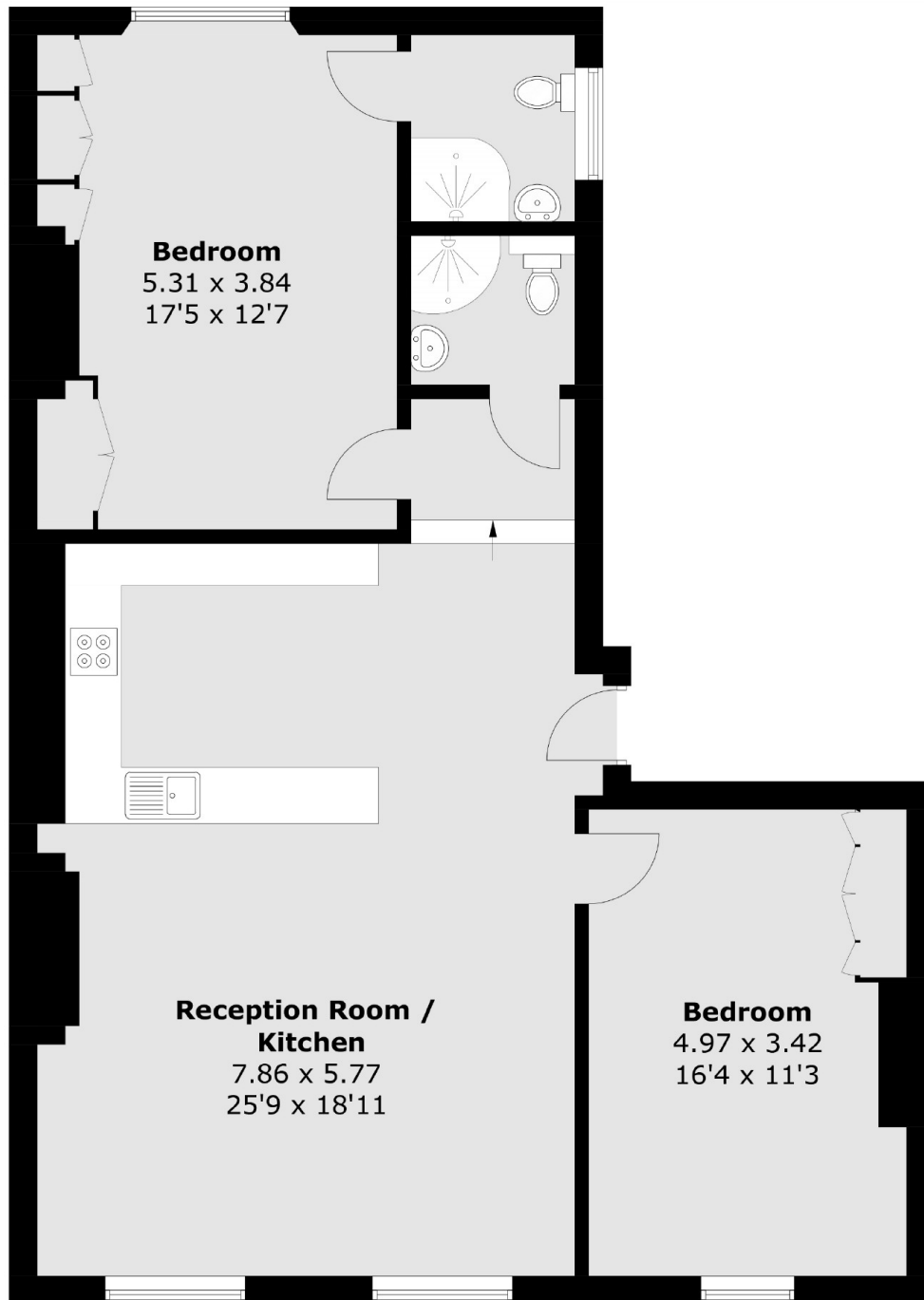


FEATURES

- Prime Mayfair Address • Two Bedrooms • Two Bathrooms • Lift • Porter • Share of Freehold •



HILL STREET,
LONDON, W1J



Total area (approx.): 95 sq. m (1,022.6 sq. ft)



WETHERELL
MAYFAIR'S FINEST PROPERTIES

102 Mount Street,
London, W1K 2TH
T: 020 7529 5566
E: sales@wetherell.co.uk

We aim to make our particulars both accurate and reliable. However they are not guaranteed; nor do they form part of an offer or contract. If you require clarification on any points then please contact us, especially if you're traveling some distance to view. Please note that appliances and heating systems have not been tested and therefore no warranties can be given as to their working order.

wetherell.co.uk