

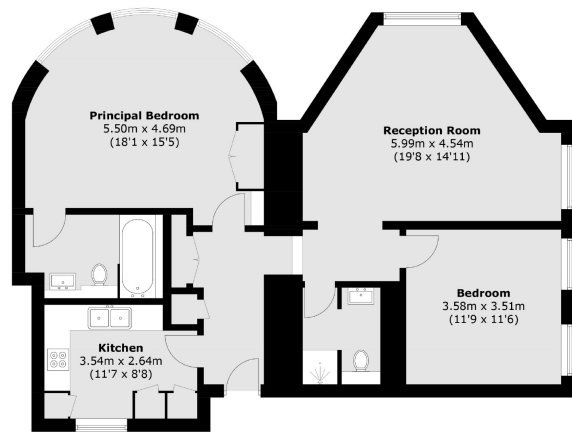


CURZON SQUARE

MAYFAIR W1J



SITUATED ON THE THIRD FLOOR OF THIS ATTRACTIVE PERIOD BUILDING WITH LIFT AND PORTER LOCATED ON CURZON SQUARE MINUTES FROM HYDE PARK.



Third Floor

Area (approx.): 95.8 sq. m (1031.2 sq. ft)

Situated on the third floor of this attractive period building with lift and porter located on Curzon Square minutes from Hyde Park and within walking distance of transport links. The apartment is presented to a high standard throughout.

The property is a stone's throw from Hyde Park and also benefits from being a short walk to both Hyde Park Corner and Green Park tube stations as well as all the shops, restaurants and amenities of Piccadilly.

A lateral two-bedroom apartment in this desirable Mayfair address. This third floor (with lift) property boasts high ceilings and plenty of natural light. The accommodation of approximately 1,031 sq ft and comprises a principal bedroom with en-suite, second double bedroom, family bathroom, fully fitted kitchen and a well-proportioned living room.

FEATURES

- Two Double Bedrooms
- Two Luxury En Suite Bathrooms
- 24 hr Porter
- Third Floor (Lift Access)
- Secure Underground Parking
- Furnished

Price: £1,895 Per week

We aim to make our particulars both accurate and reliable. However they are not guaranteed; nor do they form part of an offer or contract. If you require clarification on any points then please contact us, especially if you're traveling some distance to view. Please note that appliances and heating systems have not been tested and therefore no warranties can be given as to their working order. Energy Rating: C



WETHERELL
MAYFAIR'S FINEST PROPERTIES

102 Mount Street • London • W1K 2TH
T: 020 7529 5588 E: rentals@wetherell.co.uk

wetherell.co.uk