



# WETHERELL

MAYFAIR'S FINEST PROPERTIES



## SOUTH AUDLEY STREET, W1K

£2,495 PER WEEK

A luxury recently refurbished two double bedroom, two bathroom apartment situated in the heart of Mayfair.

Entering the property on the second floor you are greeted with an extensive living dining room, separate modern kitchen.

The primary bedroom is large with significantly adequate storage and en-suite bathroom a further second bedroom and bathroom are located at the rear of the property.

SOUTH AUDLEY STREET IS PERFECTLY LOCATED FOR THE VARIOUS BOUTIQUES, RESTAURANTS, AND HOTELS OF CENTRAL MAYFAIR. IT RUNS BETWEEN GROSVENOR SQUARE AND CURZON STREET.





## FEATURES

- Two Double Bedrooms
- Two Bathrooms
- Large Reception Room
- Wooden Floor
- Recently Refurbished
- Prime Location





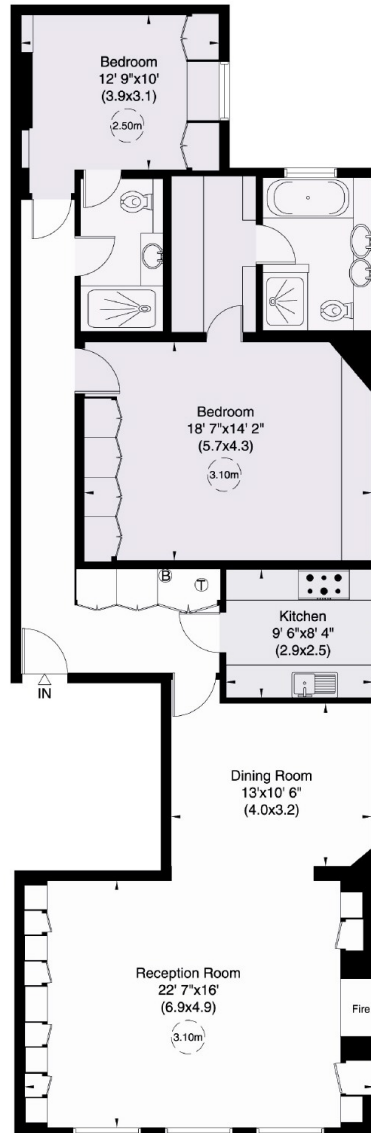
# SOUTH AUDLEY STREET, LONDON, W1K

## South Audley Street, W1K

Gross internal area (approx.)

129 Sq m (1393 Sq ft)

For identification only, Not to Scale



First Floor

Not to scale, for guidance only and must not be relied upon as a statement of fact. All measurements and areas are approximate only (and have been prepared in accordance with the current edition of the RICS Code of Measuring Practice).



**WETHERELL**  
MAYFAIR'S FINEST PROPERTIES

102 Mount Street,  
London, W1K 2TH  
T: 020 7529 5566  
E: sales@wetherell.co.uk

We aim to make our particulars both accurate and reliable. However they are not guaranteed; nor do they form part of an offer or contract. If you require clarification on any points then please contact us, especially if you're traveling some distance to view. Please note that appliances and heating systems have not been tested and therefore no warranties can be given as to their working order.

wetherell.co.uk