



CONNAUGHT PLACE

HYDE PARK, W2



A LARGE ONE BEDROOM APARTMENT WITH UNENCUMBERED SOUTH FACING VIEWS OVER 350 ACRES OF LONDON'S HYDE PARK

This apartment of 890 sq. ft is situated on the fourth floor of a Grade II Listed purpose-built block on a quiet street, adjacent to Hyde Park. There is an impressive entrance hall with high ceilings and a lift access to all floors. Upon entry you're drawn through the spacious 23 ft wide reception room to the large window and stunning views of central London's largest Royal Park.

The reception room incorporates both the living and dining space and an open plan, fully integrated kitchen neatly runs across the back wall. The bedroom shares the south facing views and has built in wardrobes. There is a large bathroom with underfloor heating, bath and walk-in shower. The apartment has additional built-in storage and air-conditioning.





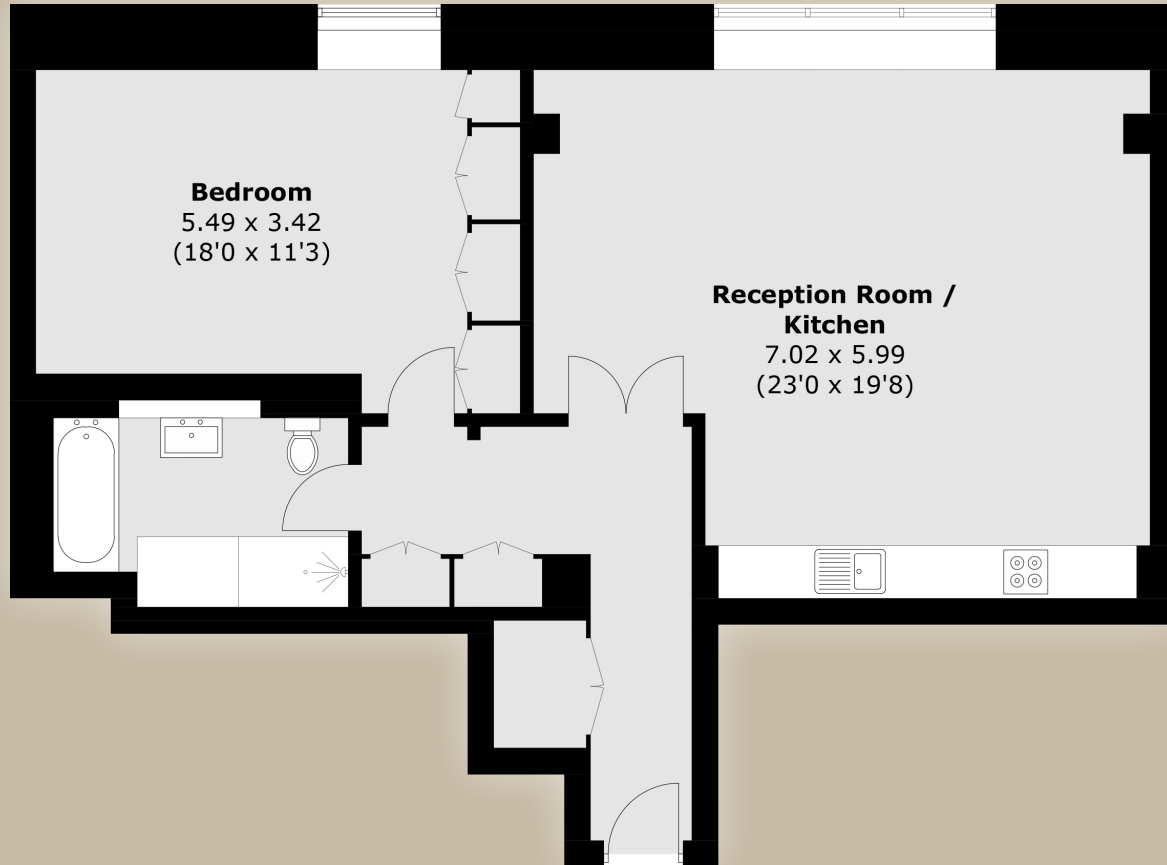
Located on the northern edge of Hyde Park, Connaught Place, is situated in a highly sought after location, close to the extensive shopping boutiques and exclusive restaurants provided by Oxford Street and Connaught Village. Mayfair, Knightsbridge and Notting Hill are all close by. Local transport links include Paddington mainline station (Heathrow Express and Network Rail) with Marble Arch being the nearest underground station offering services into the City and Canary Wharf.

CONNAUGHT PLACE

HYDE PARK, W2



TOTAL AREA: APPROX. 82.7 SQ. M (890.2 SQ.FT)



FOURTH FLOOR

Stunning Views of Hyde Park

One Bedroom

One Bathroom

890 Sq. Ft

Lift

Air-conditioning

Price

£1,350,000

Sole Agent



WETHERELL

MAYFAIR'S FINEST PROPERTIES

102 Mount Street, London, W1K 2TH

020 7529 5566 • wetherell.co.uk

Wetherell have no authority to make or give any representations or warranties in relation to the property. These particulars do not form part of any offer or contract and must not be relied upon as statements or representations of fact. Any areas, measurements or distances are approximate. The text, photographs and plans are for guidance only and are not necessarily comprehensive. It should not be assumed that the property has all the necessary planning, building regulation or other consents and Wetherell have not tested any services, equipment or facilities. Purchasers must satisfy themselves by inspection or otherwise. Energy Efficiency Rating: Band D. August 2023.