

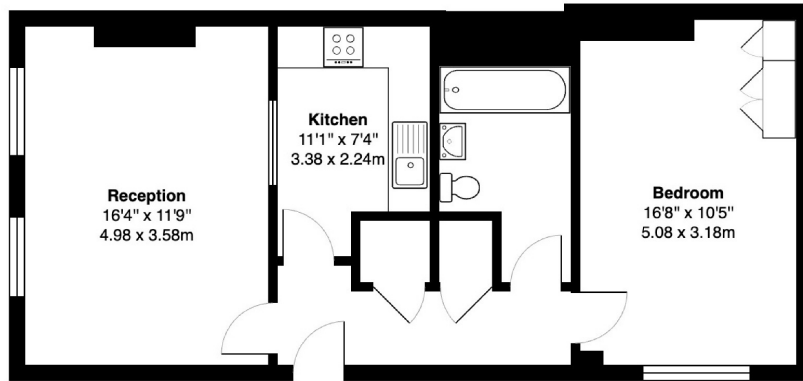


DUKE STREET

MAYFAIR W1K



MOMENTS FROM GROSVENOR SQUARE, A WELL PRESENTED ONE BEDROOM APARTMENT OF APPROXIMATELY 599 SQ.FT.



First Floor

Duke Street, W1K

Total Gross Area: 599 ft² ... 55.6 m²

All measurements are approximate and for identification guideline purposes only, not to scale.
Compliant with the RICS code of measuring practice



Moments from Grosvenor Square, a well presented one bedroom apartment of approximately 599 sq.ft.

Situated on the first floor of this Grade II listed building, the apartment presents well with two west facing windows in the reception room overlooking Duke Street and is conveniently located moments from Grosvenor Square and all the amenities Mayfair Village has to offer.

Duke Street links the heart of Mayfair with Oxford Street and is ideally located providing direct access to the shops, restaurants and other amenities of Mayfair and the West End. Bond Street tube is the nearest underground station.

FEATURES

- Mayfair Village
- Reception room
- Double Bedroom
- Separate Kitchen
- 599 sq. ft
- West facing
- Grade II Listed

Price: £1,300,000



WETHERELL

MAYFAIR'S FINEST PROPERTIES

102 Mount Street • London • W1K 2TH
T: 020 7529 5566 E: sales@wetherell.co.uk

wetherell.co.uk

We aim to make our particulars both accurate and reliable. However they are not guaranteed; nor do they form part of an offer or contract. If you require clarification on any points then please contact us, especially if you're traveling some distance to view. Please note that appliances and heating systems have not been tested and therefore no warranties can be given as to their working order.

NO ONE KNOWS MAYFAIR BETTER THAN WETHERELL