



WETHERELL

MAYFAIR'S FINEST PROPERTIES



MADDOX STREET, W1S

£1,000,000

A well-presented one-bedroom apartment located on the fourth floor of this smart modern block with lift.

This lateral apartment of 593 sq ft. Is well laid out with a large, south facing reception room benefiting from wood floors and plantation shutters. There is a separate, modern kitchen. The bedroom has built in wardrobes and en suite bathroom. The apartment also has air conditioning and a separate guest cloakroom.

Maddox Street is located to the east of Hyde Park and to the north of Piccadilly.

THE PROPERTY IS WITHIN REACH OF THE MANY AMENITIES, RESTAURANTS AND FLAGSHIP DESIGNER STORES OFFERED BY OXFORD STREET AND REGENT STREET AND THEIR SURROUNDING AREAS.

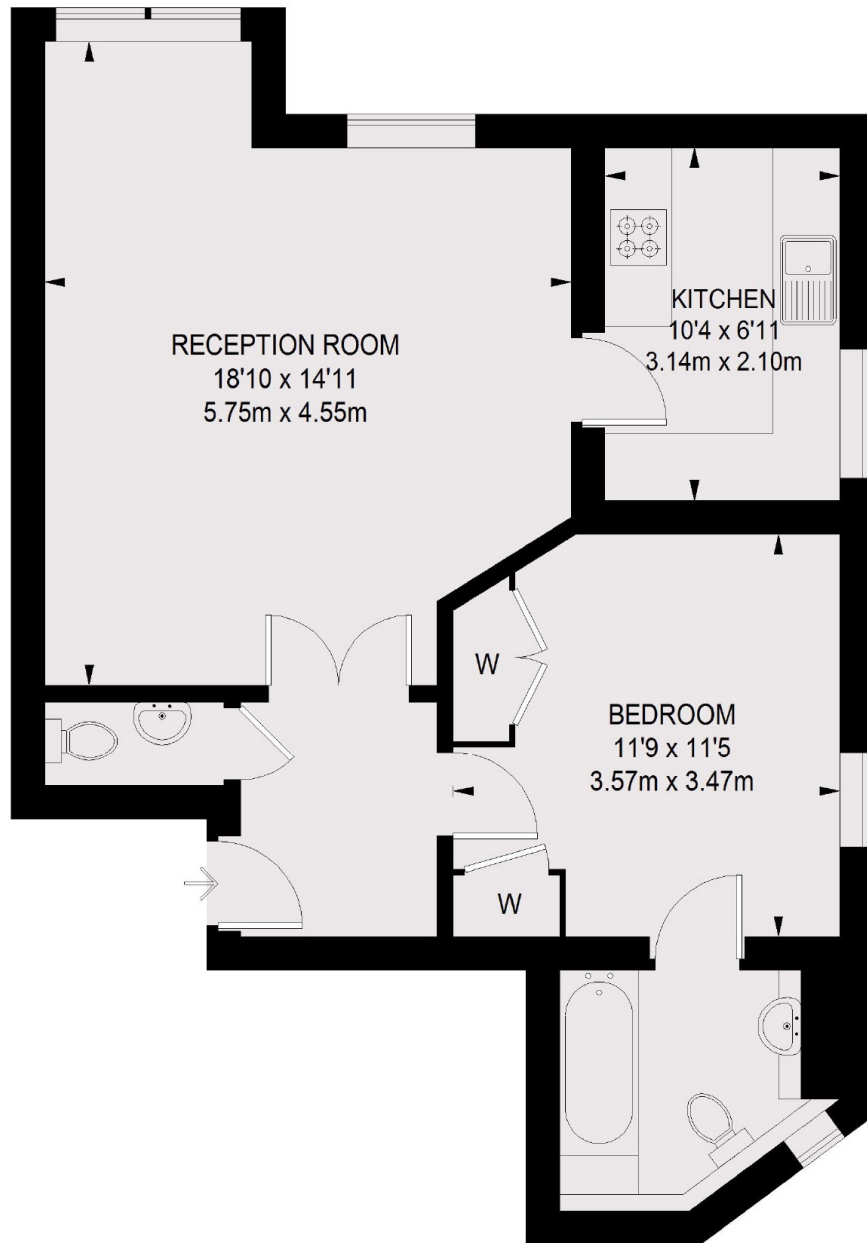


FEATURES

- Spacious Double Bedroom
- Recently Renovated
- Separate Kitchen
- Modern Fixtures & Fittings
- Luxury Bathroom
- Wooden Flooring



MADDOX STREET, LONDON, W1S



TOTAL APPROX. FLOOR AREA
593 SQ. FT. (55.07 SQ. M.)



WETHERELL
MAYFAIR'S FINEST PROPERTIES

102 Mount Street,
London, W1K 2TH
T: 020 7529 5566
E: sales@wetherell.co.uk

We aim to make our particulars both accurate and reliable. However they are not guaranteed; nor do they form part of an offer or contract. If you require clarification on any points then please contact us, especially if you're traveling some distance to view. Please note that appliances and heating systems have not been tested and therefore no warranties can be given as to their working order.

wetherell.co.uk