

ADAM'S ROW
MAYFAIR



WETHERELL
MAYFAIR'S FINEST PROPERTIES



ADAM'S ROW
MAYFAIR

AN EXCEPTIONAL FREEHOLD TOWNHOUSE OF 3,834 SQ. FT IN THE HEART OF
MAYFAIR VILLAGE WITH A PRIVATE GARAGE FOR TWO CARS.



This stunning, newly refurbished property features a spectacular principal bedroom suite with drop down cinema screen and ample storage. There is a private terrace which opens electronically and an adjoining luxury bathroom offering a free-standing bath tub, large walk-in shower, fire place and built-in TV.

There are three further bedroom en suites all which are immaculately presented. There is a smart first floor reception room, open plan kitchen and family room with a dining area.

The house also includes a state of the art cinema which seats 10 people, a fully equipped gym, steam room with shower and WC, utility room and a double garage.

The property further benefits from a selection of unique features including a traditional stone pizza oven, a retractable light well that allows for al fresco dining, fireplaces in every reception room, bedroom, air-conditioning and abundant wine storage.

Adams Row is a predominantly residential address perfectly located to benefit from the restaurants, high end boutiques and hotels literally on the doorstep. With Grosvenor Square, Mount Street Gardens and Hyde Park also moments away, the house would make the ideal central London base.

FEATURES

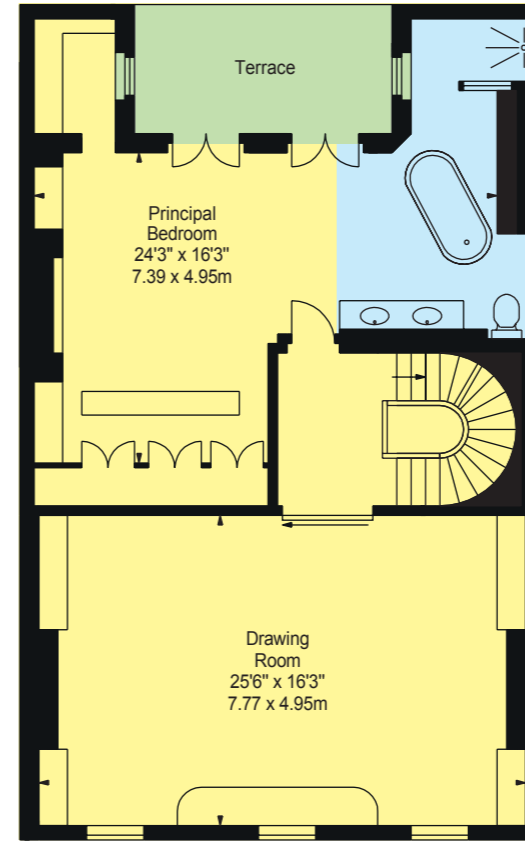
- Principal Bedroom with En Suite
- Three Further Bedroom Suites
- Two Reception Rooms
- Cinema
- Gym
- Steam Room
- Terrace
- Garage



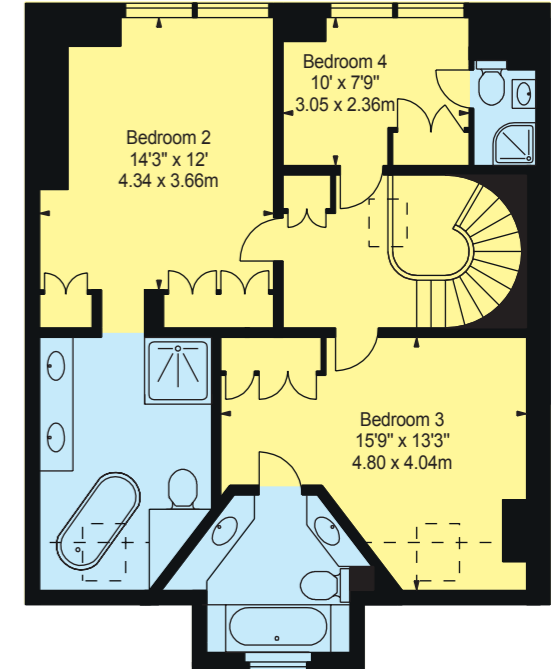




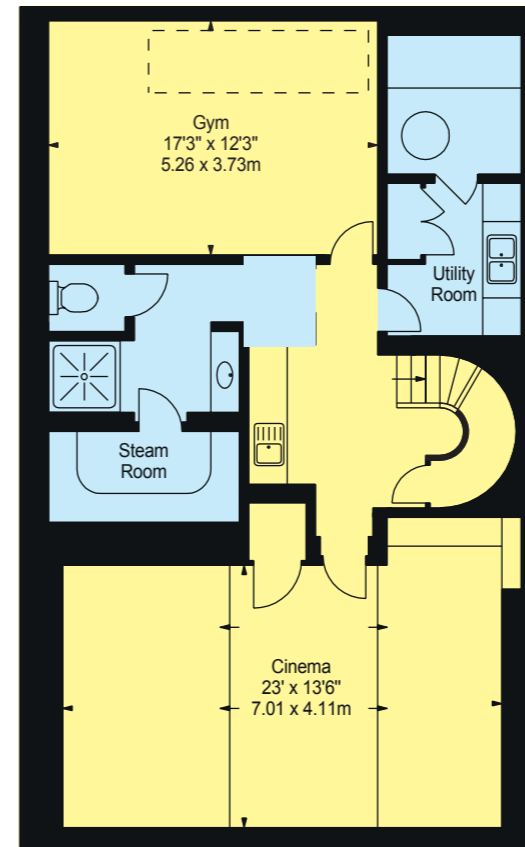
ADAM'S ROW, MAYFAIR
LONDON, W1K



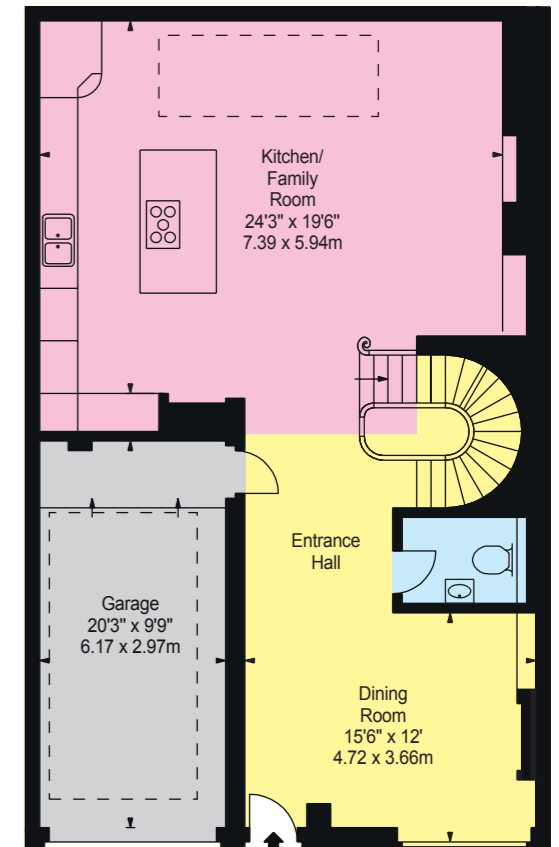
First Floor



Second Floor



Lower Ground Floor



Ground Floor

TOTAL APPROX. FLOOR AREA (INCLUDING GARAGE) 3,834 SQ. FT (356.18 SQ. M)

Energy Rating: E. We aim to make our particulars both accurate and reliable. However they are not guaranteed; nor do they form part of an offer or contract. If you require clarification on any points then please contact us, especially if you're traveling some distance to view. Please note that appliances and heating systems have not been tested and therefore no warranties can be given as to their good working order.



Sole Agents



WETHERELL
MAYFAIR'S FINEST PROPERTIES

102 Mount Street,
London, W1K 2TH
020 7493 6935
wetherell.co.uk

SALES • DEVELOPMENTS • PROPERTY MANAGEMENT • LETTINGS

No-one knows Mayfair better than Wetherell

