



WETHERELL
MAYFAIR'S FINEST PROPERTIES



ARLINGTON STREET, SW1A

£5,500 PER WEEK

This stunning, newly renovated two bedroom apartment is located within an award winning development, set in a peaceful enclave in St James's just behind the Ritz. Located on the first floor, with direct lift access, this sophisticated apartment has been seamlessly designed, incorporating the finest bespoke features and hand selected materials.

Throughout the apartment, Crestron technology and Lutron lighting ensures a smooth operation of lighting, shade, media, security and other features via touchscreen panels. The property also boasts a generous open plan kitchen and entertaining space, with a media room extending to the reception and dining area.

The principal bedroom boasts an expansive walk-in wardrobe and luxurious bathroom with standalone bathtub, shower/sauna room and the finest Italian book-matched marbled walls. Further double guest bedroom boasts a luxury en-suite bathroom with floor to ceiling marble.

Further specifications include gas fire places in the living room and principal en suite, air conditioning, electric underfloor heating in bathrooms, communal CCTV cameras and security alarm installed.

RYGER HOUSE IS A PRESTIGIOUS RESIDENTIAL DEVELOPMENT LOCATED TO IN THE HEART OF ST JAMES, IMMEDIATELY TO THE EAST OF GREEN PARK, TO THE SOUTH OF MAYFAIR AND NORTH OF ST JAMES'S PARK.

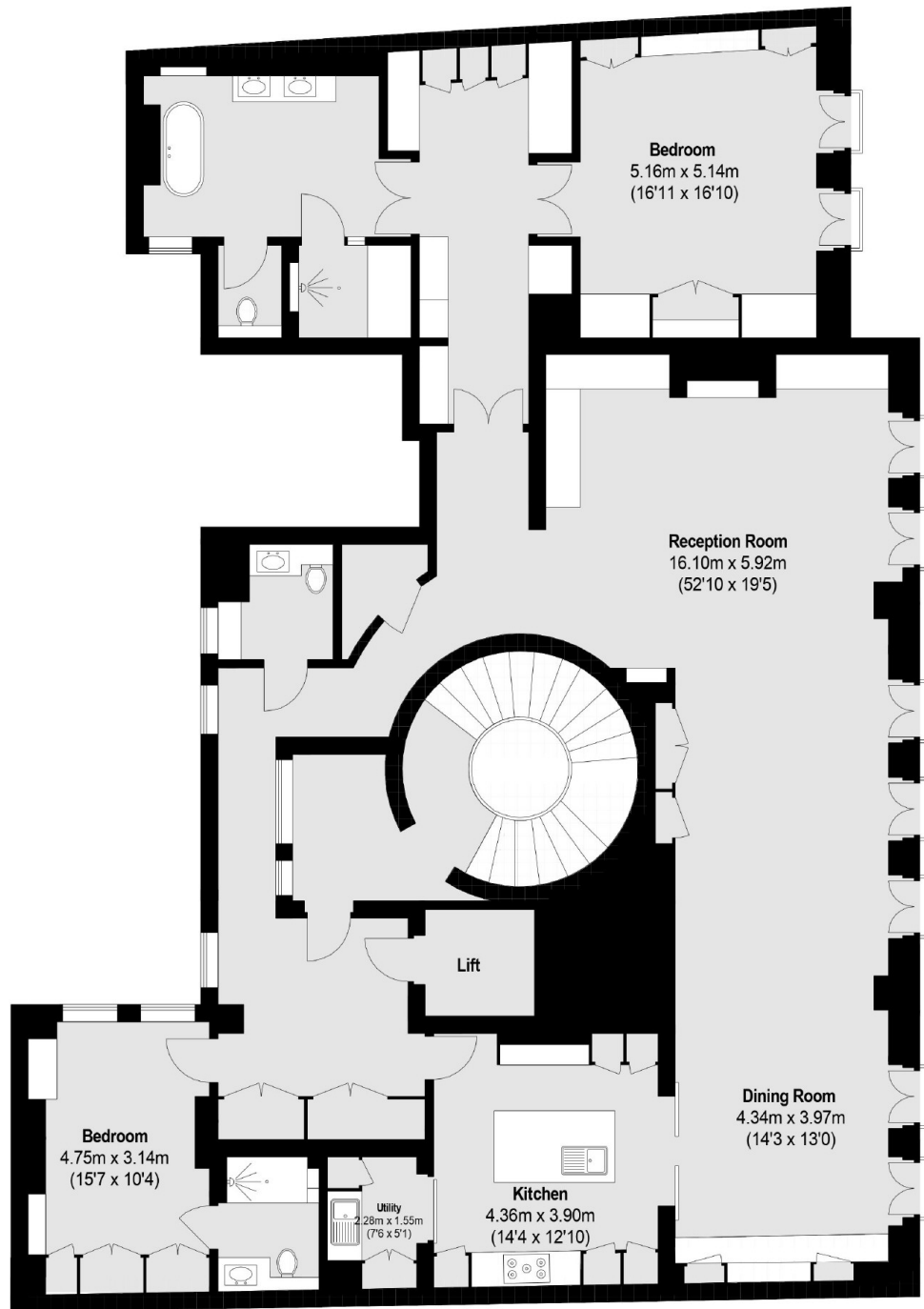


FEATURES

- Two Double Bedrooms
- Two Luxury Bathrooms
- Air Conditioning
- Secure Entry Systems
- Wooden Flooring
- Crestron Home Automation



ARLINGTON STREET, LONDON, SW1A



Total area (approx.): 257.32 sq. m (2770 Sq. ft)



WETHERELL
MAYFAIR'S FINEST PROPERTIES

102 Mount Street,
London, W1K 2TH
T: 020 7529 5566
E: sales@wetherell.co.uk

We aim to make our particulars both accurate and reliable. However they are not guaranteed; nor do they form part of an offer or contract. If you require clarification on any points then please contact us, especially if you're traveling some distance to view. Please note that appliances and heating systems have not been tested and therefore no warranties can be given as to their working order.

wetherell.co.uk