



WETHERELL
MAYFAIR'S FINEST PROPERTIES



PARK STREET, W1K

£1,900,000

An immaculate one-bedroom apartment situated on the second floor of an attractive red brick building.

This well-proportioned apartment has a large bay fronted reception room with four west-facing windows and ornamental balcony overlooking Park Street. Adjacent is a modern kitchen with integrated Bosch appliances and additional storage.

The bedroom has built in wardrobes, bay fronted aspect, additional ornamental balcony, and an en suite bathroom. There is a separate guest WC and additional storage off the hallway.

106 Park Street was originally erected as a house in 1887-1889 by architect James Trant Smith; today the building stands as a well-presented apartment block with lift access.

PARK STREET IS THE LONGEST STREET ON THE GROSVENOR ESTATE, EXTENDING NORTH TO SOUTH ACROSS MAYFAIR AND CROSSING TWO PRINCIPAL STREETS, UPPER BROOK STREET AND UPPER GROSVENOR STREET.



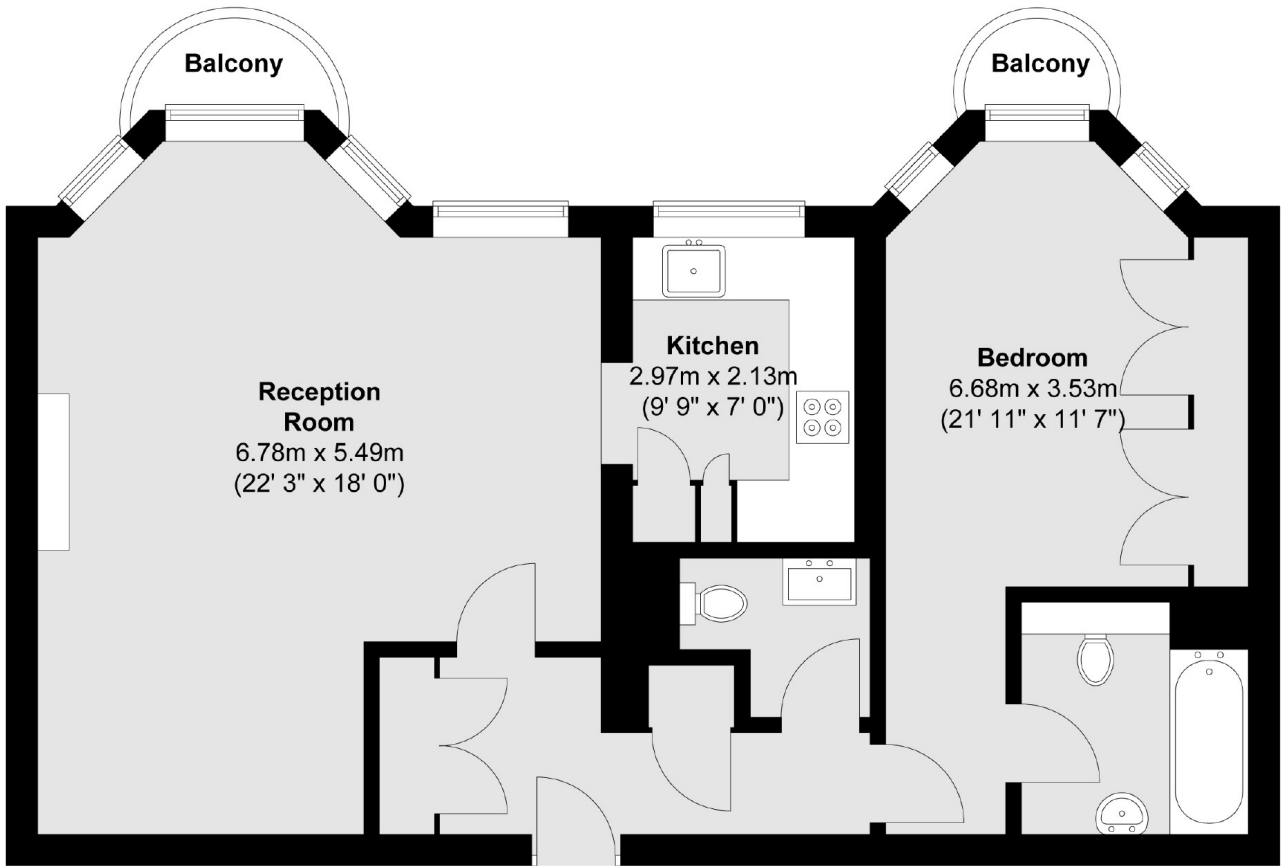
FEATURES

- One Bedroom • One Reception Room • Long Lease • Two Ornamental Balconies • Second Floor • Lift •



PARK STREET, LONDON, W1K

Second Floor



Total area (approx.) : 72.8 sq. m (784 sq. ft)
Total balcony area (approx.) : 2.4 sq. m (26 sq. ft)



WETHERELL
MAYFAIR'S FINEST PROPERTIES

102 Mount Street,
London, W1K 2TH
T: 020 7529 5566
E: sales@wetherell.co.uk

We aim to make our particulars both accurate and reliable. However they are not guaranteed; nor do they form part of an offer or contract. If you require clarification on any points then please contact us, especially if you're traveling some distance to view. Please note that appliances and heating systems have not been tested and therefore no warranties can be given as to their working order.

wetherell.co.uk