



WETHERELL

MAYFAIR'S FINEST PROPERTIES



DUKE STREET, W1K

£8,450,000

An elegant five bedroom maisonette in an attractive red brick building located on one of Mayfair's premier streets.

Finished to an excellent standard throughout, this south west facing apartment is situated on the third and fourth floor with a further loft room on the fifth floor. The third floor has impressive ceiling heights and wood flooring throughout. There's a dual aspect corner reception room with feature fireplace and large sash windows, this leads through to a spacious 26' open plan kitchen dining room with built in appliances and plenty of storage.

The principal bedroom is quietly located at the rear of the property and has built in wardrobes and a stunning en suite bathroom. There are two further bedrooms on this floor which could also be used as additional reception rooms.

THERE IS ALSO A SEPARATE WC. STAIRS LEAD UP TO THE FOURTH FLOOR WHERE THERE ARE TWO FURTHER BEDROOMS BOTH WITH BUILT IN WARDROBES, A SEPARATE FAMILY BATHROOM AND A SUBSTANTIAL UTILITY ROOM.



FEATURES

- Dual Aspect Reception Room • Five Bedrooms • Two Bathrooms • Open-Plan Kitchen • Lift • Long Lease •



DUKE STREET, LONDON, W1K

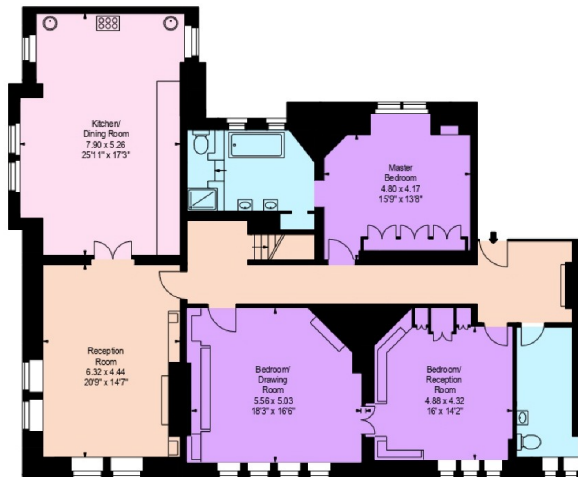
Flat 3, 79 - 81 Duke Street W1

Gross internal area (approx) :
322.0 Sq m (3,466 Sq ft)

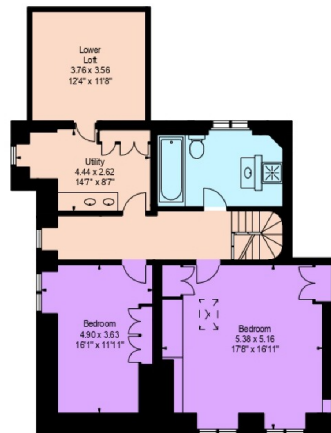
For identification purposes only. Not to scale

All Calculations include Any/All Areas Under 1.5m Head Height.
*As Defined by BS5533 - Code of Measuring Practice

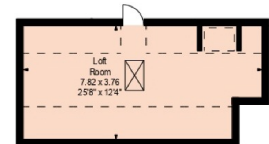
BKRI Floorplans



Third Floor



Fourth Floor



Fifth Floor



WETHERELL
MAYFAIR'S FINEST PROPERTIES

102 Mount Street,
London, W1K 2TH

T: 020 7529 5566

E: sales@wetherell.co.uk

We aim to make our particulars both accurate and reliable. However they are not guaranteed; nor do they form part of an offer or contract. If you require clarification on any points then please contact us, especially if you're traveling some distance to view. Please note that appliances and heating systems have not been tested and therefore no warranties can be given as to their working order.

wetherell.co.uk