



- Mid Terrace Property
- Two Double Bedrooms
- Lounge
- Kitchen
- Bathroom
- Rear Courtyard
- Close To Town Centre
- Great Investment Opportunity

135 Park Street
Oldham, OL8 1EQ

£75,000

An opportunity to purchase this two bedroom, mid terrace property that requires refurbishment. The ground floor accommodation comprises of an entrance vestibule, lounge, basement entrance and a kitchen diner. To the first floor there are two bedrooms and a bathroom. Externally there is an enclosed courtyard to the rear. This is an ideal buy to let/investor purchase with no onward chain. Contact us today to arrange a viewing.

Ground Floor

Entrance Vestibule 2' 8" x 3' 3" (0.81m x 0.99m)

Living Room 14' 4" x 12' 0" (4.37m x 3.65m)

Wall mounted radiator and window to front aspect

Kitchen/Diner 14' 10" x 11' 5" (4.52m x 3.48m)

Fitted with a range of base and eye level units incorporating a sink and drainer, space for cooker, washing machine and fridge freezer, built in storage cupboard, window to rear, door to rear garden

First Floor

Landing

Bedroom One 11' 11" x 13' 0" (3.63m x 3.96m)

Radiator, window to front.



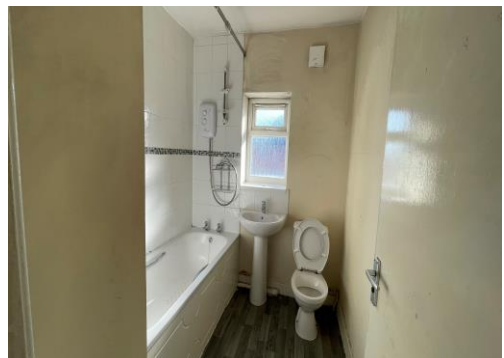
Bedroom Two 12' 4" x 7' 9" (3.76m x 2.36m)

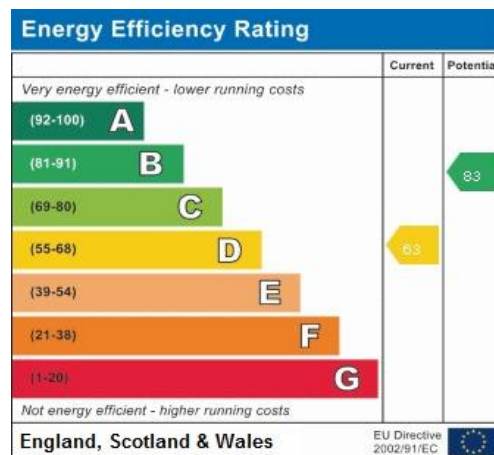
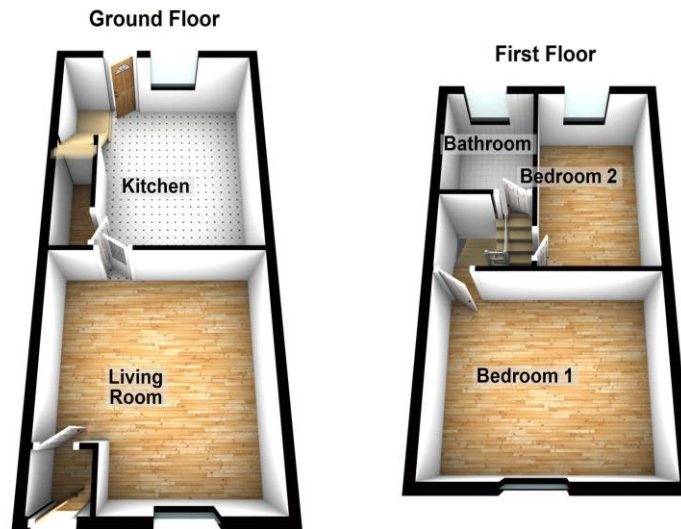
Radiator, window to rear aspect.

Bathroom 7' 3" x 6' 3" (2.21m x 1.90m)

Suite comprising of a low level WC, wash basin, panelled bath with shower over.

External





Tenure: We have been advised by the vendor that the property is tbc (please note that details of the tenure should be confirmed by any prospective purchasers solicitor).

Services: All main services are understood to be connected to the property. No services or appliances have been tested.

Agents Notes: We endeavor to make all our descriptions and dimensions as accurate as possible, however their accuracy is not guaranteed.

Property Misdescriptions Act 1991: These details do not form part of any contract. They have been produced in good faith and are intended to be a general guide to the property. None of the statements in this document are to be taken as fact and any intending purchasers are to satisfy themselves by inspections or otherwise as to the correctness of statements in these details. No person in the employment of this company has the authority to make or give any representation or warranty in relation to this property.

Make Your Move

Plumlife Move, Armitt House, Monmouth Road, Cheadle Hulme, Stockport, SK8 7EF

Tel: 0161 486 7700 Fax: 0161 485 5858 Email: move@plumlife.co.uk

www.plumlifemove.co.uk