

# EMBASSY

LETTINGS & MANAGEMENT



## 12 Queens Meadow, Cambridge, CB1 3JN

**£2,500 Per month**

Beautifully Presented Family Home, located in the popular Cherry Hinton area, east of Central Cambridge, offering easy access to Cambridge and surrounding areas

The property is spread over 3 floors

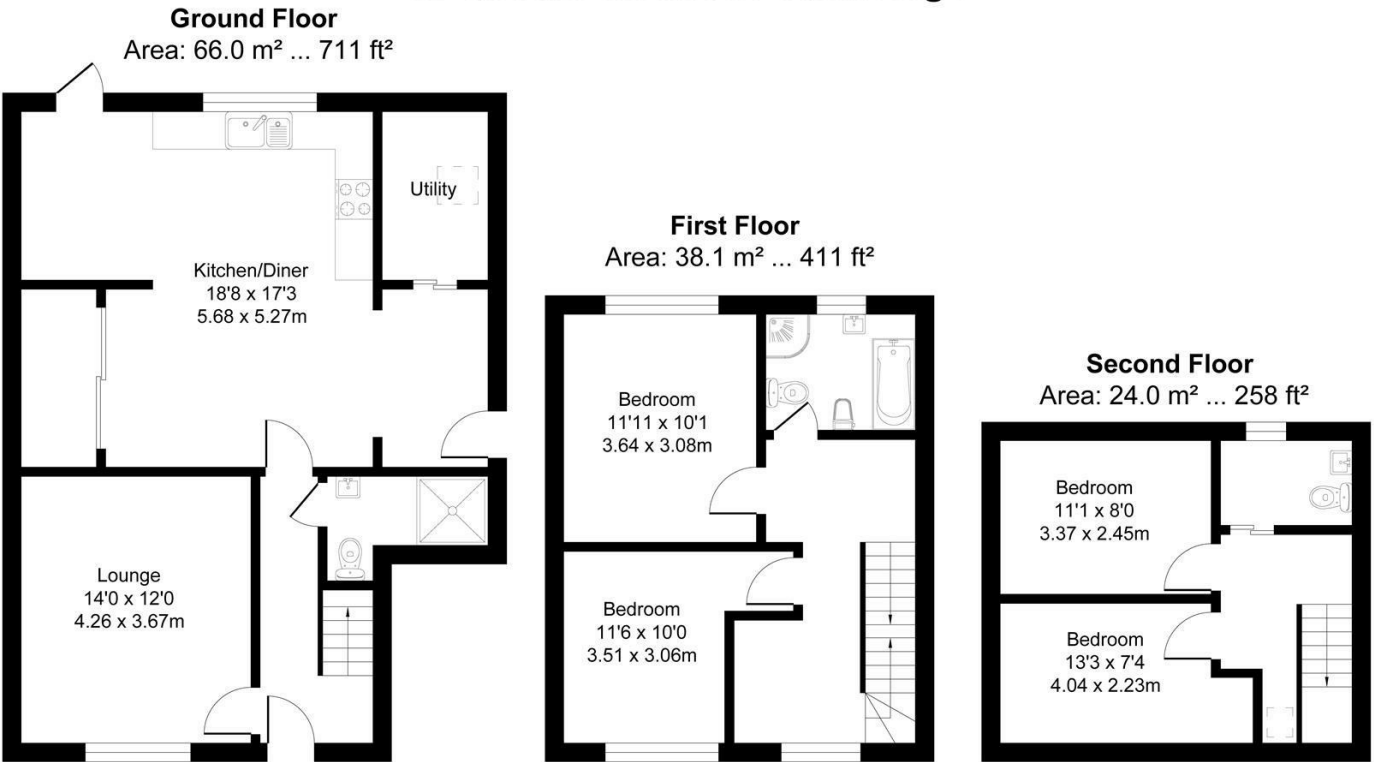
The Entrance Hallway runs through the heart of the property, to the rear is a well thought out Kitchen with plenty of natural light thanks to Velux rooflights

Off from the Kitchen is a Study and separate Utility Room, there is also side and rear access to the Garden, which is mostly laid to lawn with a patio running across the back and down the side of the property



# Floor Plan

## 12 Queens Meadow. Cambridge

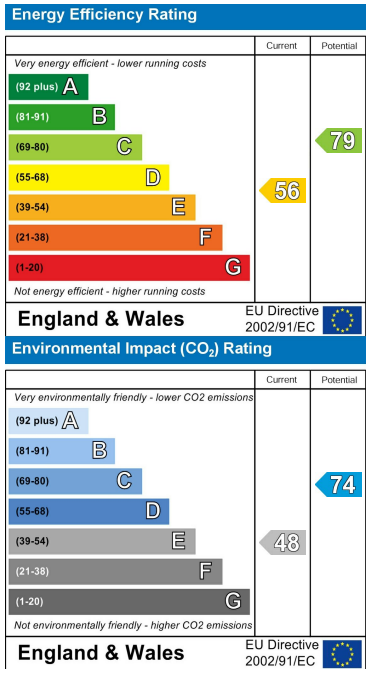


Total Area: 128.1 m<sup>2</sup> ... 1380 ft<sup>2</sup>  
All Measurements are approximate and for display purposes only

### Area Map



### Energy Efficiency Graph



These particulars, whilst believed to be accurate are set out as a general outline only for guidance and do not constitute any part of an offer or contract. Intending purchasers should not rely on them as statements of representation of fact, but must satisfy themselves by inspection or otherwise as to their accuracy. No person in this firms employment has the authority to make or give any representation or warranty in respect of the property.