

EMBASSY

LETTINGS & MANAGEMENT



92 Mowbray Road, Cambridge, CB1 7TG

£2,700 Per month

Large 3/4 Bedroom Property

The property has 4 large Bedrooms, huge Living Room and large Kitchen/Dining Room, ideal for sharers or families alike, located between Addenbrookes & Cambridge City Centre.

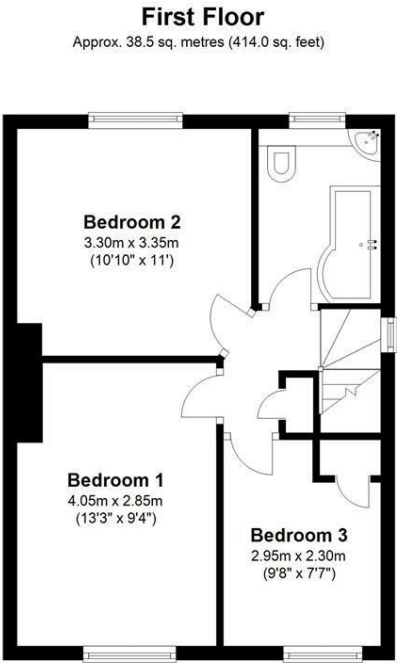
The Entrance Hallway leads through the heart of the house, as well as the stairwell and a WC, There is also a large Bedroom on the ground-floor.

To the rear of the ground-floor is a large Kitchen/Dining. There is also a very large Living Room.

Upstairs includes two further double Bedrooms and a single Bedroom with built in Wardrobe.



Floor Plan

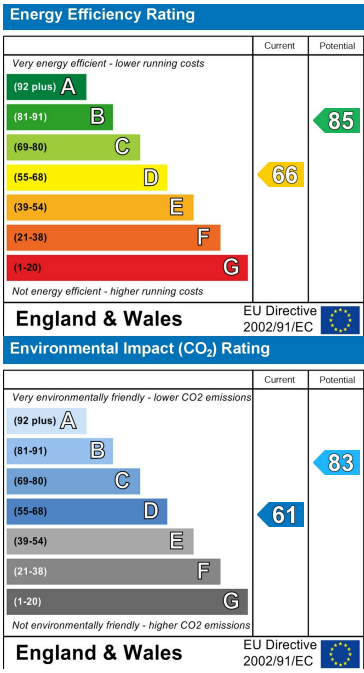


Total area: approx. 97.9 sq. metres (1054.1 sq. feet)
Drawings are for guidance only. www.beachenergy.co.uk
Plan produced using PlanUp.

Area Map



Energy Efficiency Graph



These particulars, whilst believed to be accurate are set out as a general outline only for guidance and do not constitute any part of an offer or contract. Intending purchasers should not rely on them as statements of representation of fact, but must satisfy themselves by inspection or otherwise as to their accuracy. No person in this firms employment has the authority to make or give any representation or warranty in respect of the property.