

# EMBASSY

LETTINGS & MANAGEMENT



**281 Glenalmond Avenue, Cambridge, CB2 8DT**

**£1,750 Per month**

Modern Ground Floor, 2 bedroom apartment at this prestigious development situated just south of Cambridge City Centre, minutes from the Railway Station, Addenbrooke's Hospital and the rest of Cambridge

This Ground Floor Apartment is located on the edge of the popular Kaleidoscope development off Brooklands Avenue. With great access to Cambridge Centre, Cambridge Train Station and the south side of the city.

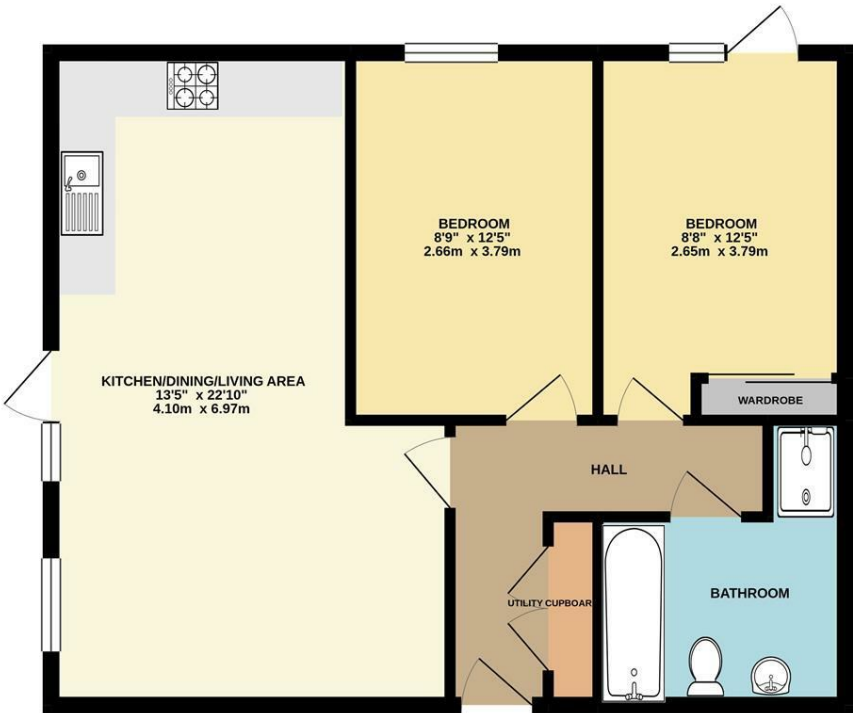
The Entrance Hallway runs through the heart of the property, leading to:

Kitchen/Living/Dining Area: A large living space, Modern Kitchen with integrated appliances.



Floor Plan

GROUND FLOOR  
594 sq.ft. (55.2 sq.m.) approx.

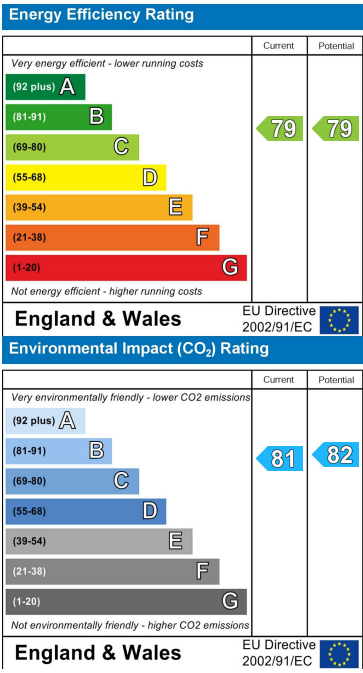


TOTAL FLOOR AREA : 594 sq.ft. (55.2 sq.m.) approx.  
Whilst every attempt has been made to ensure the accuracy of the floorplan contained here, measurements of doors, windows, rooms and any other items are approximate and no responsibility is taken for any error, omission or mis-statement. This plan is for illustrative purposes only and should be used as such by any prospective purchaser. The services, systems and appliances shown have not been tested and no guarantee as to their operability or efficiency can be given.  
Made with Metronix ©2021.

Area Map



Energy Efficiency Graph



These particulars, whilst believed to be accurate are set out as a general outline only for guidance and do not constitute any part of an offer or contract. Intending purchasers should not rely on them as statements of representation of fact, but must satisfy themselves by inspection or otherwise as to their accuracy. No person in this firms employment has the authority to make or give any representation or warranty in respect of the property.