

EMBASSY

LETTINGS & MANAGEMENT



7 Suez Road, Cambridge, CB1 3QB

£1,800 Per month

3 Bedroom Victorian Terrace House, Located in the Centre of Cambridge, just off Mill Road

This is a fantastic opportunity to rent a Classic Cambridge Victorian Terrace property finished to a modern standard.

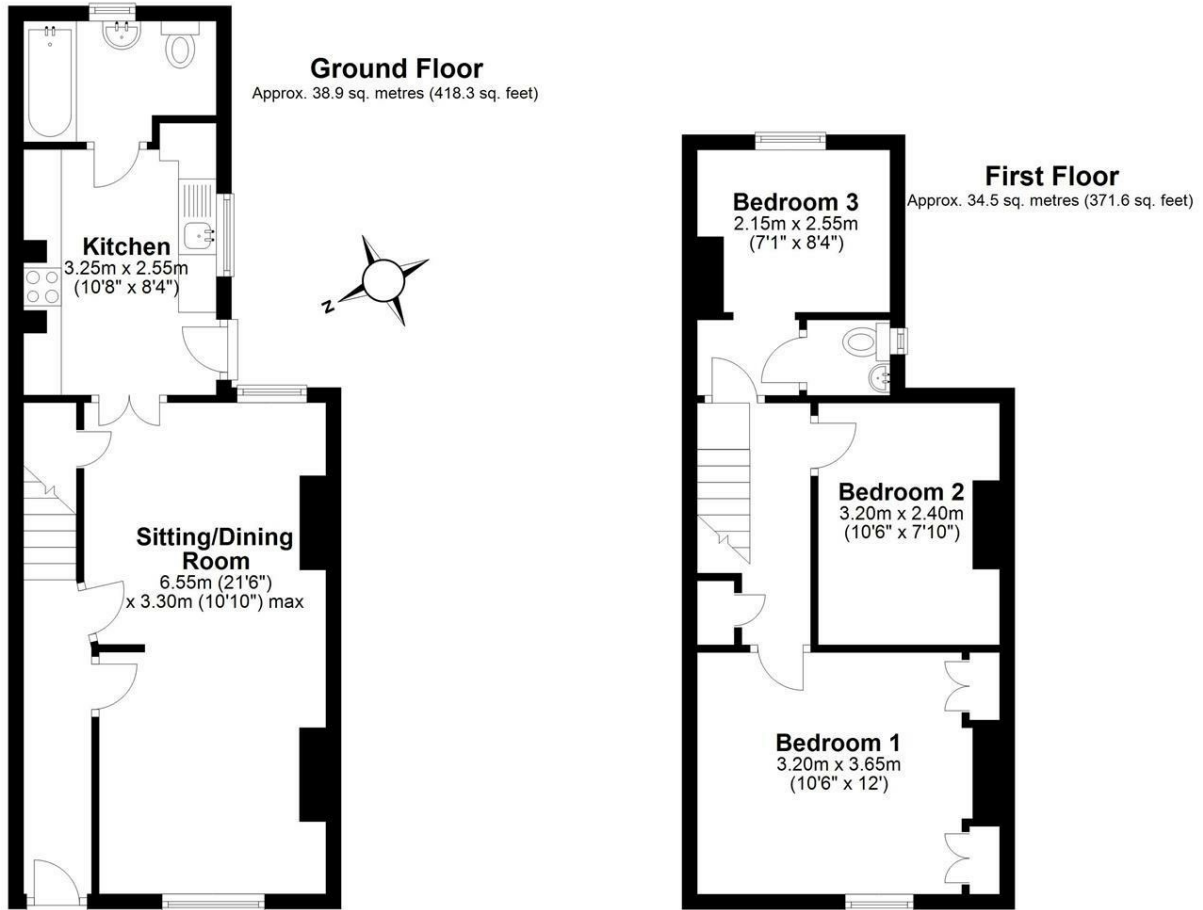
The Entrance Hallways runs from the on street doorway, to the right is the large Living Room and Dining area, to the rear is a Large Modern Kitchen with integrated appliances.

The Modern Bathroom is also located to the rear of the Ground floor.

Off from the kitchen is access to the Rear Garden, mostly laid to lawn and patio, with access from the rear.



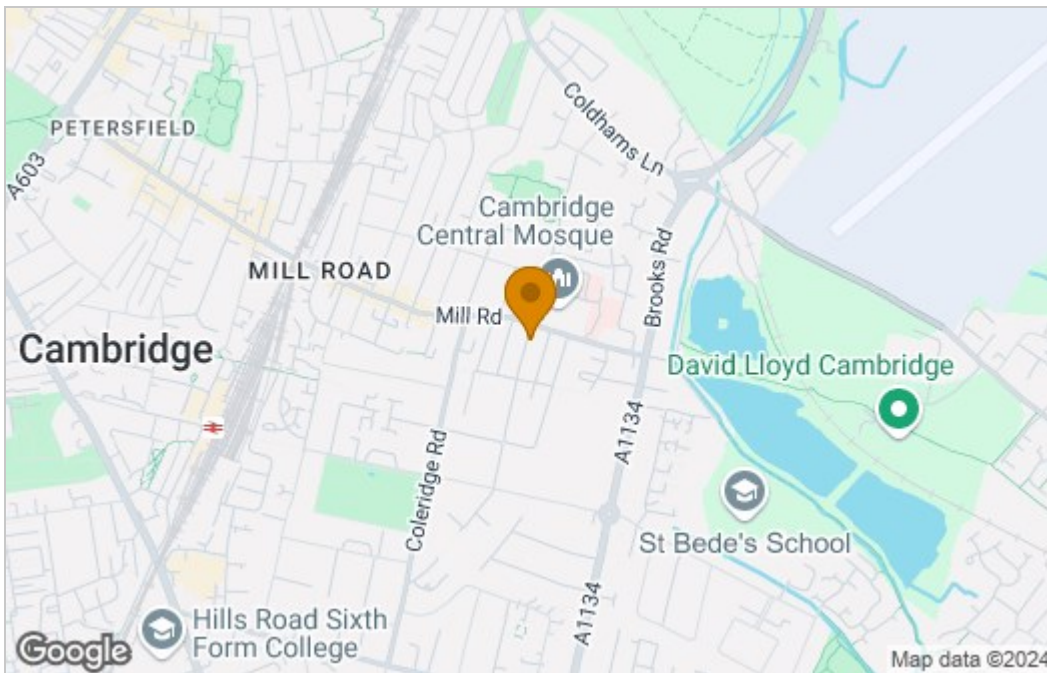
Floor Plan



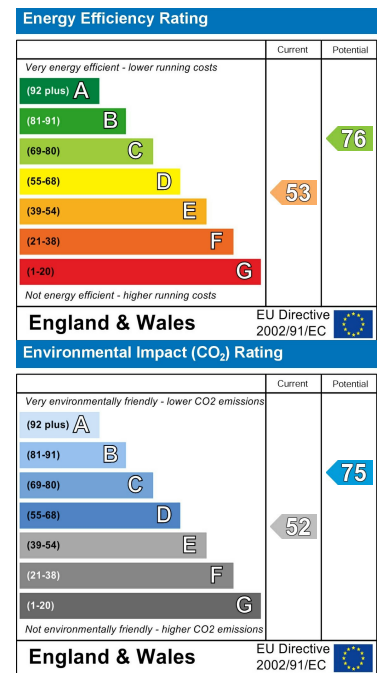
Total area: approx. 73.4 sq. metres (789.9 sq. feet)

Drawings are for guidance only. www.beachenergy.co.uk
Plan produced using PlanUp.

Area Map



Energy Efficiency Graph



These particulars, whilst believed to be accurate are set out as a general outline only for guidance and do not constitute any part of an offer or contract. Intending purchasers should not rely on them as statements of representation of fact, but must satisfy themselves by inspection or otherwise as to their accuracy. No person in this firm's employment has the authority to make or give any representation or warranty in respect of the property.