



Oakmans
0121 448 4000
TO LET
oakmans.co.uk

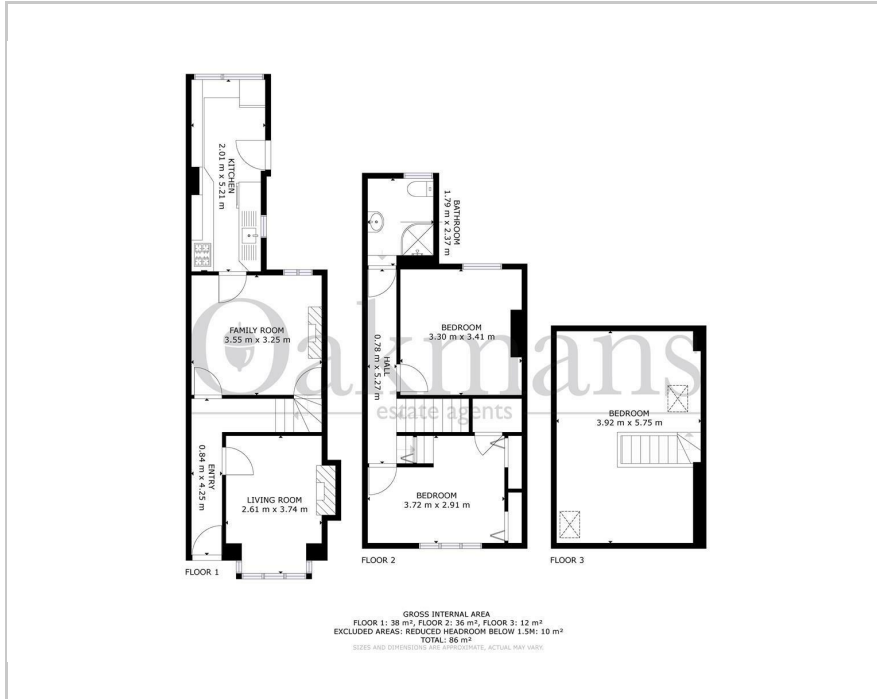
DIRECT HOUSING
TO LET
0121 472 3331
www.direct-housing.co.uk

HOUSE HUNT
TO LET
0121 44 88 982

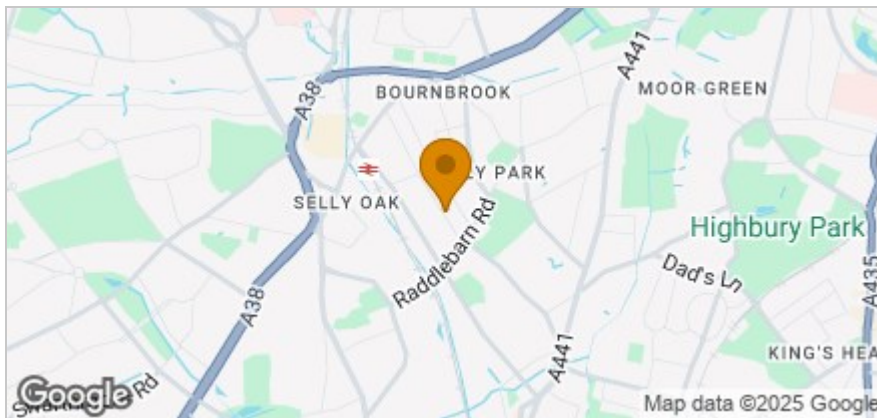
279

279 Tiverton Road, Birmingham, B29 6DA
£375,000

Floor Plan



Area Map



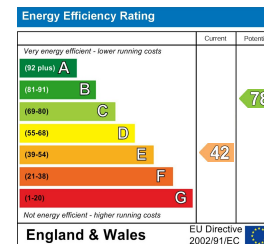
Accommodation

- STUDENT INVESTMENT OPPORTUNITY
- 4 BEDROOMS
- POTENTIAL FOR DEVELOPMENT
- PRIME LOCATION
- CLOSE TO UNIVERSITY OF BIRMINGHAM
- VIEWING HIGHLY RECOMMENDED

Viewing

Please contact our Selly Oak Office on 01212464010 if you wish to arrange a viewing appointment for this property or require further information.

Energy Efficiency Graph



These particulars, whilst believed to be accurate are set out as a general outline only for guidance and do not constitute any part of an offer or contract. Intending purchasers should not rely on them as statements of representation of fact, but must satisfy themselves by inspection or otherwise as to their accuracy. No person in this firm's employment has the authority to make or give any representation or warranty in respect of the property.

2 Katie Road, Birmingham, B29 6JG

Tel: 01212464010 Email: info@oakmans.co.uk www.oakmans.co.uk