



27 Burford Park Road, Birmingham, B38 8PA
Offers In The Region Of £260,000



2



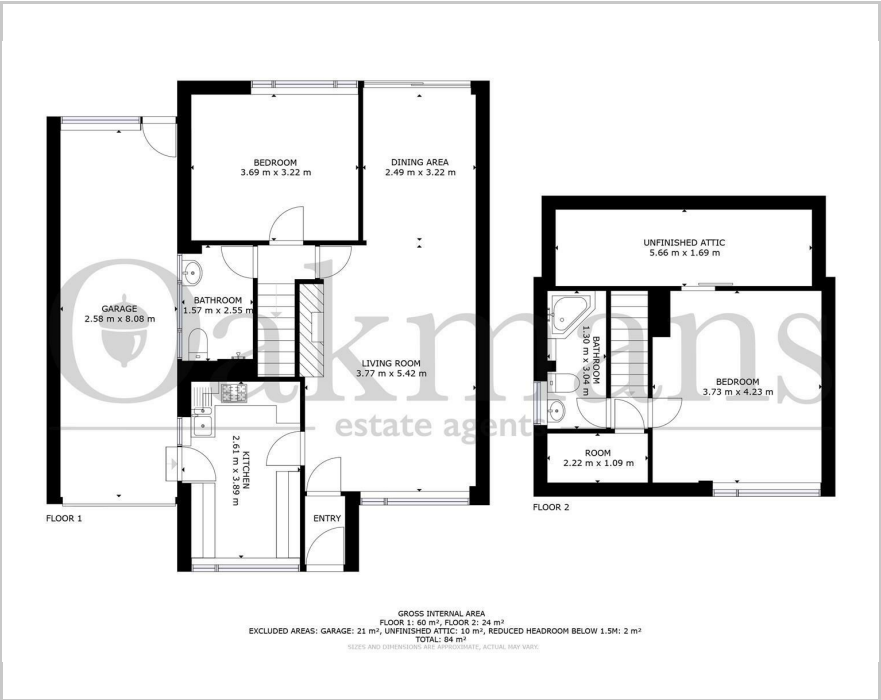
2



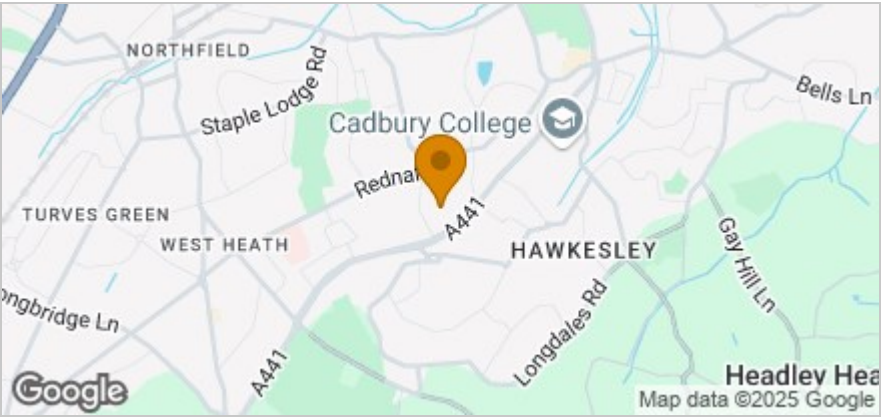
1



Floor Plan



Area Map



These particulars, whilst believed to be accurate are set out as a general outline only for guidance and do not constitute any part of an offer or contract. Intending purchasers should not rely on them as statements of representation of fact, but must satisfy themselves by inspection or otherwise as to their accuracy. No person in this firm's employment has the authority to make or give any representation or warranty in respect of the property.

2 Katie Road, Birmingham, B29 6JG
Tel: 01212464010 Email: info@oakmans.co.uk www.oakmans.co.uk

Accommodation

- Two Bedroom Dorma Bungalow
- Through Lounge
- Kitchen
- Large Garage
- Off Road Parking for Multiple Cars
- Requires Modernization
- Excellent Location
- Quiet Cul-de-sac
- Two Bathrooms
- No Chain

Viewing

Please contact our Selly Oak Office on 01212464010 if you wish to arrange a viewing appointment for this property or require further information.

Energy Efficiency Graph

