



32 Bibsworth Avenue, Birmingham, B13 0BA

£3,200



6



6

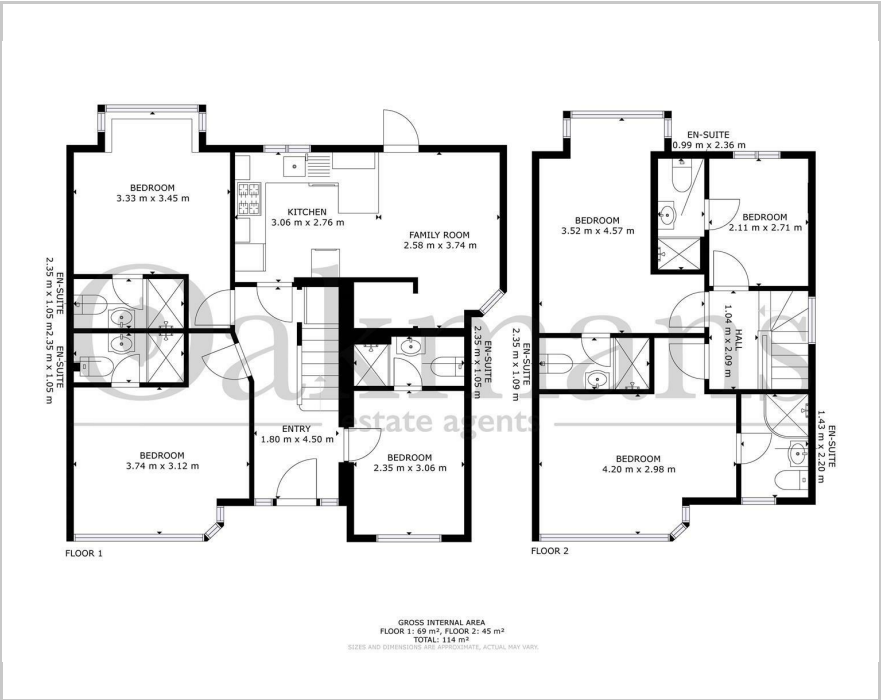


1

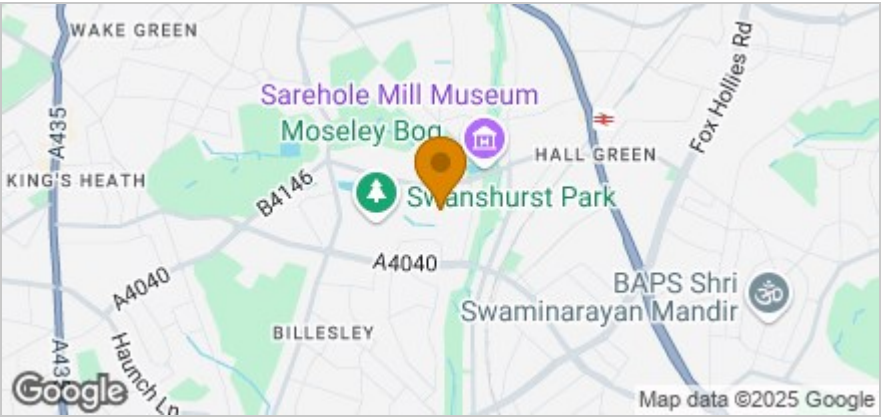


D

Floor Plan



Area Map



These particulars, whilst believed to be accurate are set out as a general outline only for guidance and do not constitute any part of an offer or contract. Intending purchasers should not rely on them as statements of representation of fact, but must satisfy themselves by inspection or otherwise as to their accuracy. No person in this firms employment has the authority to make or give any representation or warranty in respect of the property.

2 Katie Road, Birmingham, B29 6JG
Tel: 01212464010 Email: info@oakmans.co.uk www.oakmans.co.uk

Accommodation

- Circa 15 Minutes To Jaguar/Land Rover
- Available January
- Six Bed Six Ensuite HMO
- Easy Access To Birmingham City Centre
- Fully Furnished
- Parking
- Company Let Option
- Call Oakmans Today

Viewing

Please contact our Selly Oak Office on 01212464010 if you wish to arrange a viewing appointment for this property or require further information.

Energy Efficiency Graph

