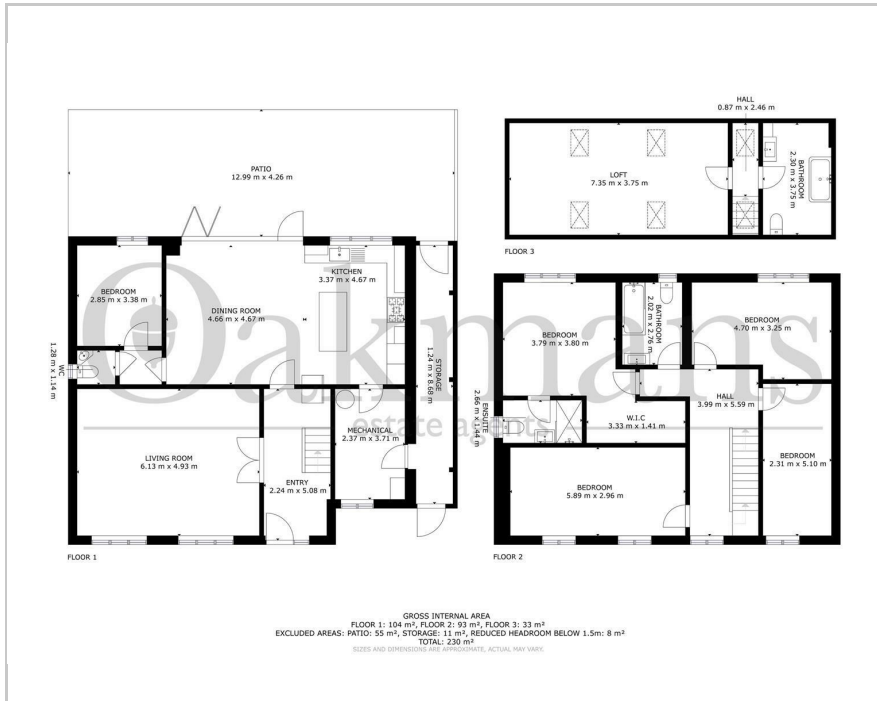


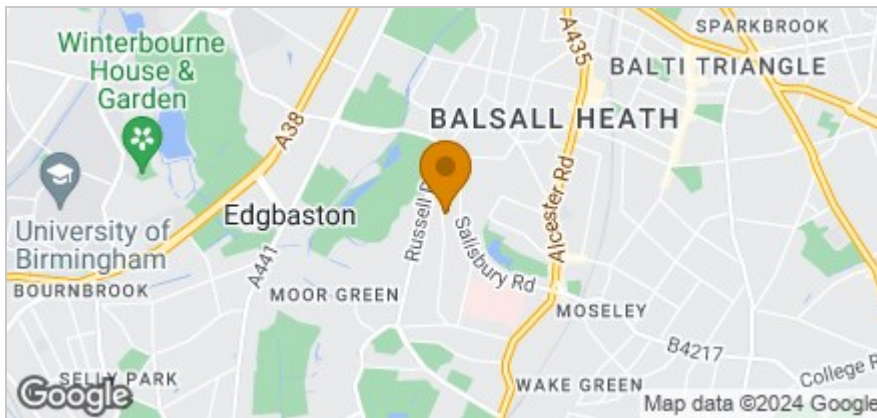


30 Moorcroft Road, Birmingham, B13 8LX
£850,000

Floor Plan



Area Map



Accommodation

- Five Bedroom Detached Home
- Brand New Throughout
- Finished to Exceptionally High Standard
- Large Kitchen/Living Space
- Lounge
- Study
- Three Bathrooms plus Downstairs W/C
- Landscaped Rear Garden
- Driveway for Multiple Cars
- Great Location

Viewing

Please contact our Selly Oak Office on 01212464010 if you wish to arrange a viewing appointment for this property or require further information.

Energy Efficiency Graph



These particulars, whilst believed to be accurate are set out as a general outline only for guidance and do not constitute any part of an offer or contract. Intending purchasers should not rely on them as statements of representation of fact, but must satisfy themselves by inspection or otherwise as to their accuracy. No person in this firm's employment has the authority to make or give any representation or warranty in respect of the property.