

# Oakmans

estate agents



Apartment 15,4 Rea Place, Birmingham, B12 0NP

£175,000

# Oakmans



2



1

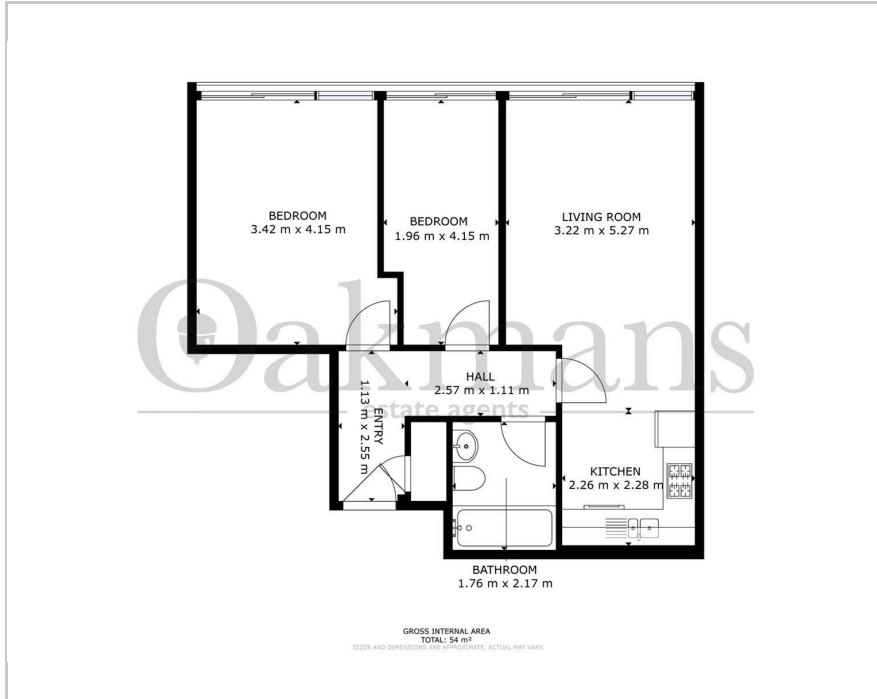


1

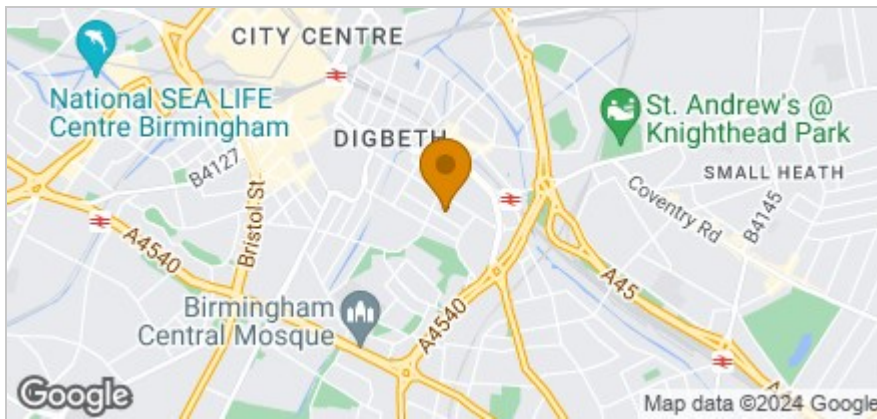


B

## Floor Plan



## Area Map



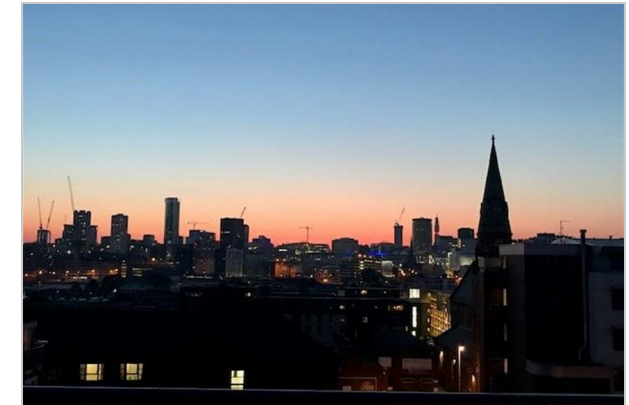
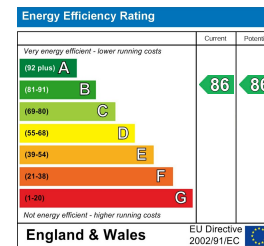
## Accommodation

- EPC Rating B
- Immaculately Presented
- City Centre Skyline Views
- Secure Allocated Parking Space
- Long Lease - 102 Years
- Secure Communal Entrance
- Lift Access
- New Windows / Doors To Be Fitted
- Ideal For First Time Buyers
- Ideal For Investors

## Viewing

Please contact our Selly Oak Office on 01212464010 if you wish to arrange a viewing appointment for this property or require further information.

## Energy Efficiency Graph



These particulars, whilst believed to be accurate are set out as a general outline only for guidance and do not constitute any part of an offer or contract. Intending purchasers should not rely on them as statements of representation of fact, but must satisfy themselves by inspection or otherwise as to their accuracy. No person in this firm's employment has the authority to make or give any representation or warranty in respect of the property.