



55A Woodland Green, Gloucester, GL4 8BD

£1,400 Per Calendar Month

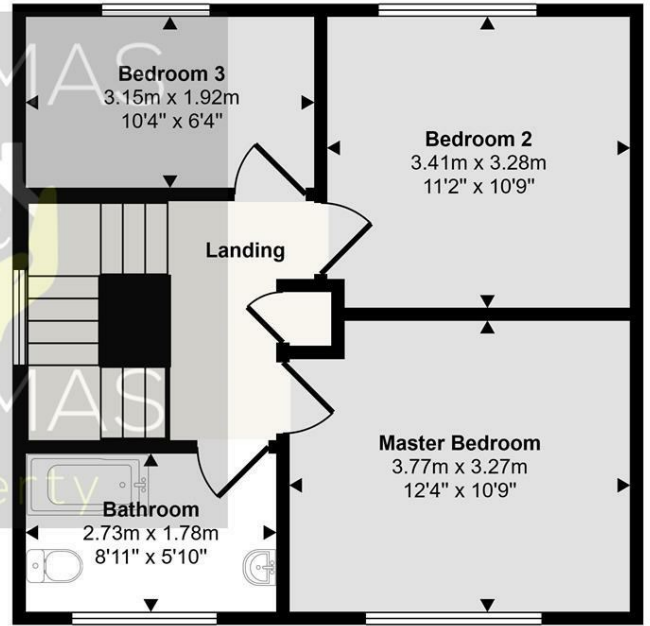
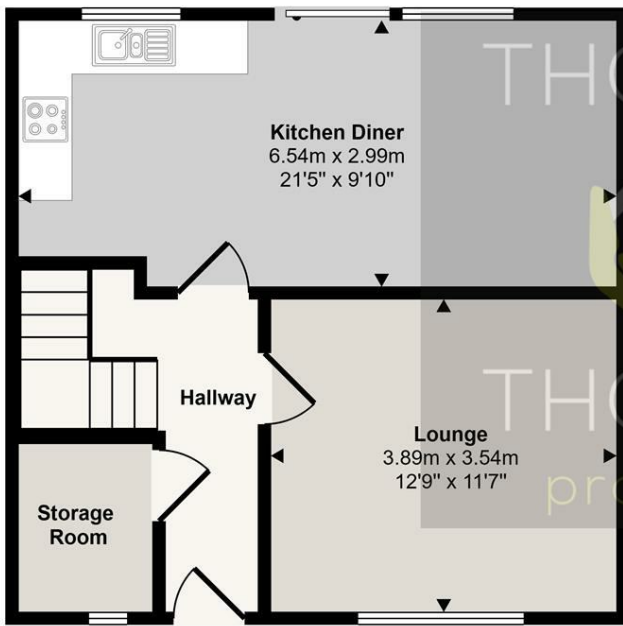
Thomas and Thomas are pleased to present this immaculate three bedroom family home located in Upton St Leonards, benefiting from off road parking.

Briefly comprising of: Entrance hall with WC, leading through to the lounge. There is a good sized kitchen / diner leading on to the low maintenance garden.

Upstairs there are two double bedrooms, a single bedroom and modern family bathroom with shower over bath.

- Very Well Presented
- Three Bedroom Family Home
- Open Plan Kitchen / Diner
- Low Maintenance Garden
 - Off Road Parking
 - Available

Approx Gross Internal Area
89 sq m / 957 sq ft



This floorplan is only for illustrative purposes and is not to scale. Measurements of rooms, doors, windows, and any items are approximate and no responsibility is taken for any error, omission or mis-statement. Icons of items such as bathroom suites are representations only and may not look like the real items. Made with Made Snappy 360.

Energy Efficiency Rating		
	Current	Potential
Very energy efficient - lower running costs		
(92 plus) A		
(81-91) B		
(69-80) C		
(55-68) D		
(39-54) E		
(21-38) F		
(1-20) G		
Not energy efficient - higher running costs		
England & Wales	84	84
EU Directive 2002/91/EC		

Environmental Impact (CO ₂) Rating		
	Current	Potential
Very environmentally friendly - lower CO ₂ emissions		
(92 plus) A		
(81-91) B		
(69-80) C		
(55-68) D		
(39-54) E		
(21-38) F		
(1-20) G		
Not environmentally friendly - higher CO ₂ emissions		
England & Wales		
EU Directive 2002/91/EC		



These particulars, whilst believed to be accurate are set out as a general outline only for guidance and do not constitute any part of an offer or contract. Intending purchasers should not rely on them as statements of representation of fact, but must satisfy themselves by inspection or otherwise as to their accuracy. No person in this firm's employment has the authority to make or give any representation or warranty in respect of the property.