



## 7 Burnet Close, Gloucester, GL3 1QB

£1,350 Per Calendar Month

This well presented three bedroom semi detached home is located on the new Whittle Gardens development in Innsworth.

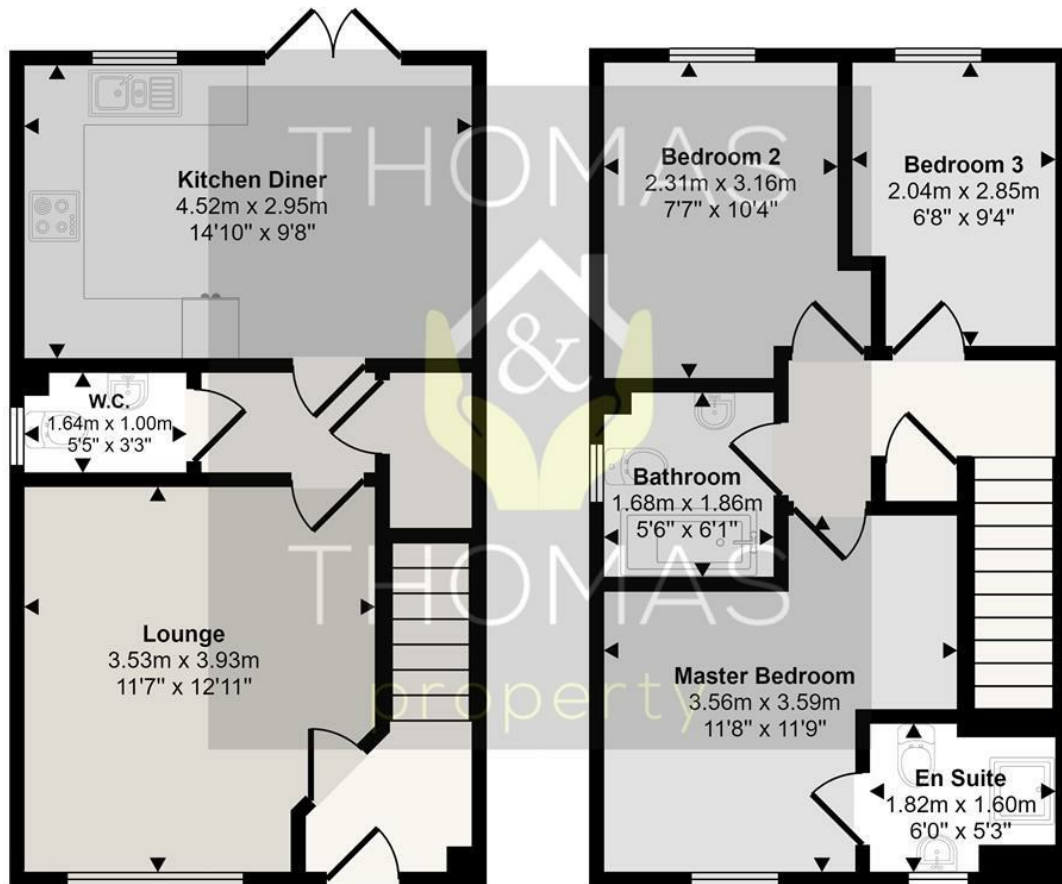
Briefly comprising of: Entrance hall, lounge, WC and large storage cupboard The kitchen / diner is located at the back of the property with integrated fridge freezer and dishwasher. Upstairs there are three bedrooms, the main bedroom benefiting from an en suite shower room and finally a family bathroom.

Outside there is a private enclosed garden with shed and side access and to the front of the property are two off road parking spaces.

This property is available from MAY!

- Three Bedrooms
- Semi Detached
- Off Road Parking for Two Cars
- En Suite and Family Bathroom
- Enclosed Garden
- Available From May

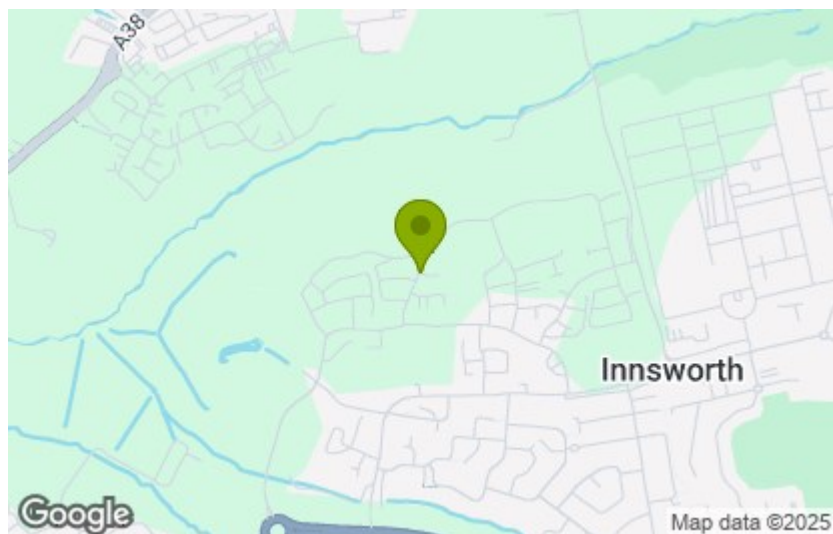
Approx Gross Internal Area  
74 sq m / 795 sq ft



This floorplan is only for illustrative purposes and is not to scale. Measurements of rooms, doors, windows, and any items are approximate and no responsibility is taken for any error, omission or mis-statement. Icons of items such as bathroom suites are representations only and may not look like the real items. Made with Made Snappy 360.

Energy Efficiency Rating		
	Current	Potential
Very energy efficient - lower running costs		
(92 plus) <b>A</b>		<b>96</b>
(81-91) <b>B</b>		
(69-80) <b>C</b>		
(55-68) <b>D</b>		
(39-54) <b>E</b>		
(21-38) <b>F</b>		
(1-20) <b>G</b>		
Not energy efficient - higher running costs		
England & Wales	EU Directive 2002/91/EC	EU Directive 2002/91/EC

Environmental Impact (CO <sub>2</sub> ) Rating		
	Current	Potential
Very environmentally friendly - lower CO <sub>2</sub> emissions		
(92 plus) <b>A</b>		
(81-91) <b>B</b>		
(69-80) <b>C</b>		
(55-68) <b>D</b>		
(39-54) <b>E</b>		
(21-38) <b>F</b>		
(1-20) <b>G</b>		
Not environmentally friendly - higher CO <sub>2</sub> emissions		
England & Wales	EU Directive 2002/91/EC	EU Directive 2002/91/EC



These particulars, whilst believed to be accurate are set out as a general outline only for guidance and do not constitute any part of an offer or contract. Intending purchasers should not rely on them as statements of representation of fact, but must satisfy themselves by inspection or otherwise as to their accuracy. No person in this firm's employment has the authority to make or give any representation or warranty in respect of the property.