



High Street, Elgin, IV30 1DW  
Offers Over £85,000

**BELVOIR!**



# BELVOIR!

Located in the heart of Elgin, this delightful new build first floor apartment offers a unique opportunity to reside in a beautifully restored landmark building that's the talk of the town. This charming one bedroom apartment is perfect for those seeking modern living combined with historical elegance. The property boasts a contemporary design while retaining the external character of its original architecture. With modern interiors and an abundance of natural light, the flat provides a welcoming atmosphere for both relaxation and entertaining. What's more the apartment has been styled with the latest homewares and décor from the well known retailer that's led the restoration project. Convenience is at your doorstep, as this residence is ideally situated close to excellent travel links and a variety of local amenities. Whether you are looking to explore the vibrant town centre or enjoy the tranquillity of nearby parks, this location caters to all lifestyles. Accommodation comprises Open plan Lounge/ Kitchen, Double bedroom and a stylish shower room. The property further benefits from an air source heat pump and double glazing. EPC Rating B

## **Communal entrance**

The communal entrance is located on the High Street and is secured with a video intercom and is shared amongst the four apartments. There is a bicycle storage area for each property.

## **Hallway**

The apartment is entered via a secure door from the communal stairwell. Spacious storage cupboard which also houses the hot water tank and consumer unit. Recessed ceiling spotlights. Wood effect laminate flooring. Central heating radiator.

## **Open Plan Kitchen/Lounge 14'5" x 14'9" (4.4 x 4.5)**

Bright open plan living space with a modern fitted kitchen with three large windows to the front and side aspects. The kitchen has been fitted with integrated appliances including a Fridge freezer, electric double oven, induction hob with extractor hood, microwave and a washing machine. There are ample wall and base units with complimentary worktop area. Stainless steel sink with drainer. Two central heating radiators. Recessed ceiling spotlights. Wood effect laminate flooring.

## **Shower room 8'10" x 6'2" (2.7 x 1.88)**

Contemporary shower room comprising shower cubicle, Wash hand basin and Toilet. Recessed spotlight and illuminated mirror. Opaque window to the front aspect. Vinyl flooring. Heated towel radiator.

## **Bedroom 10'4" x 10'9" (3.15 x 3.29)**

Bright double bedroom with window to the front aspect. Central heating radiator. Wood effect laminate flooring. Ceiling light fitting. Ample space for bedroom furniture.

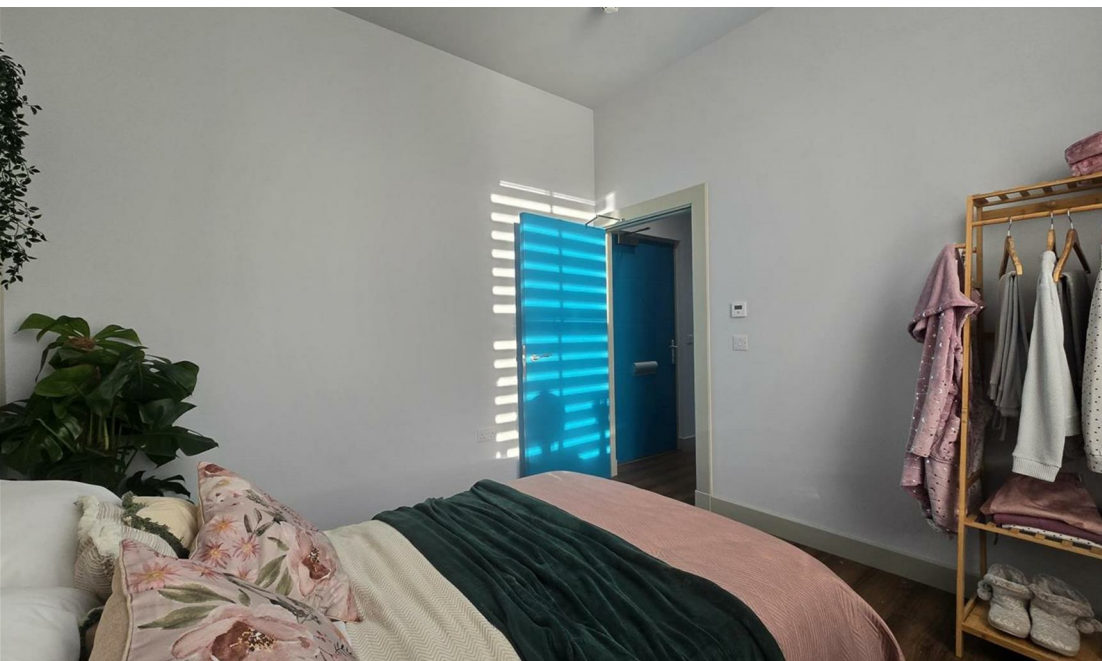


22 Thunderton Place, Elgin, Moray IV30 1BG  
Tel: 01343 545788  
[moray@belvoirlettings.com](mailto:moray@belvoirlettings.com)  
[www.belvoirlettings.com](http://www.belvoirlettings.com)

# BELVOIR!







We endeavour to make our sales particulars accurate and reliable, however, they do not constitute or form part of an offer or any contract and none is to be relied upon as statements of representation or fact. Any services, systems and appliances listed in this specification have not been tested by us and no guarantee as to their operating ability or efficiency is given. All measurements have been taken as a guide to prospective buyers only, and are not precise. If you require clarification or further information on any points, please contact us, especially if you are travelling some distance to view. Fixtures and fittings other than those mentioned are to be agreed with the seller.

# BELVOIR!