

34 Links Drive
Radlett WD7 8BE

£3,500 Per Month

A four-bedroom, two bathroom semi detached home situated in one of Radletts premier avenues and within a short walk of Radlett Village and mainline station.

34 Links Drive , Radlett, WD7 8BE



- Four Bedrooms
- Large Garden
- Private Road
- Three Reception Rooms
- Off Street Parking
- Two Bathrooms
- Close to Transport Links

Ground Floor

Entrance Hallway

Lounge

12x13.5 (3.66m x 3.96m.1.52m)

Family Room

12 x 11.9 (3.66m x 3.35m.2.74m)

Dining Area

10.7 x 11.5 (3.05m.2.13m x 3.35m.1.52m)

Kitchen

7.1 x 15.11 (2.13m.0.30m x 4.57m.3.35m)

Utility Room

Cloakroom WC

Study

7.1 x 7.11 (2.13m.0.30m x 2.13m.3.35m)

First Floor

Landing

Bedroom Two

12 x 14 (3.66m x 4.27m)

Bedroom Three

11.11 x 11.11 (3.35m.3.35m x 3.35m.3.35m)

Bedroom Four

10.7 x 7.9 (3.05m.2.13m x 2.13m.2.74m)

Family Bathroom

WC

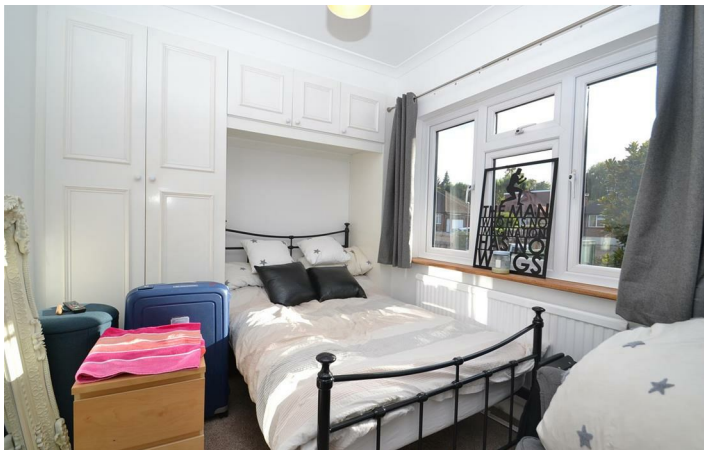
Second Floor

Master Bedroom

13 x 13.4 (3.96m x 3.96m.1.22m)

Ensuite





Floor Plan

Total Area: 1645 ft² ... 152.8 m²

All measurements are approximate and for display purposes only

Second Floor
Area: 293 ft² ... 27.3 m²



First Floor
Area: 554 ft² ... 51.5 m²



Ground Floor
Area: 797 ft² ... 74.0 m²



These particulars, whilst believed to be accurate are set out as a general outline only for guidance and do not constitute any part of an offer or contract. Intending purchasers should not rely on them as statements of representation of fact, but must satisfy themselves by inspection or otherwise as to their accuracy. No person in this firm's employment has the authority to make or give any representation or warranty in respect of the property.

54 Watling Street, Radlett, Hertfordshire, WD7 7NN
Tel: 01923 537 111 Email: info@openstates.co.uk <https://www.openstates.co.uk>

Energy Efficiency Rating		Current	Potential
Very energy efficient - lower running costs			
(92 plus)	A		85
(81-91)	B		
(69-80)	C		
(55-68)	D	63	
(39-54)	E		
(21-38)	F		
(1-20)	G		
Not energy efficient - higher running costs			
England & Wales		EU Directive 2002/91/EC	