



52 Watling Street

, Radlett, WD7 7NN

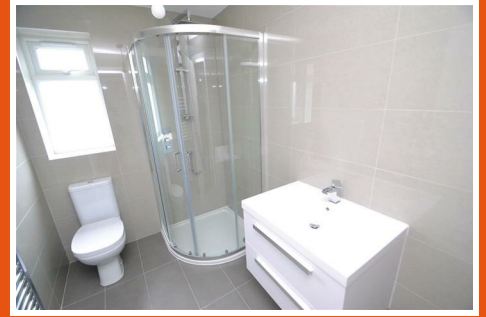
Guide Price £325,000



52 Watling Street

, Radlett, WD7 7NN

Guide Price £325,000



A well-presented TWO DOUBLE BEDROOM APARTMENT situated above shops in the heart of Radlett Village and just a few minutes stroll to the boutiques, cafes, restaurants and Radlett Station with direct links to Central London. This stunning property overlooks a well-maintained park area to the front and comprises: Entrance hall, spacious open plan kitchen/living room, two double bedrooms and a modern fully tiled bathroom. Externally there is an allocated parking space in a carpark at the rear of the building and the property is offered CHAIN FREE WITH A NEW 125 YR LEASE.

COMMUNAL ENTRANCE

ENTRANCE HALL

OPEN PLAN KITCHEN/LIVING ROOM

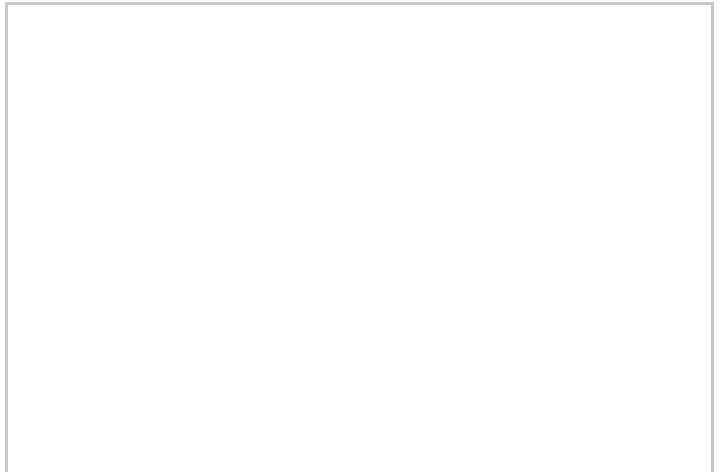
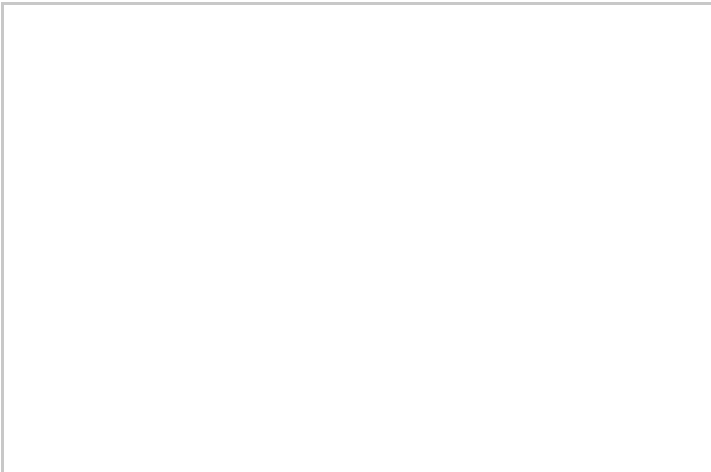
BEDROOM ONE

BEDROOM TWO

FAMILY BATHROOM

EXTERIOR

ALLOCATED PARKING SPACE



Road Map



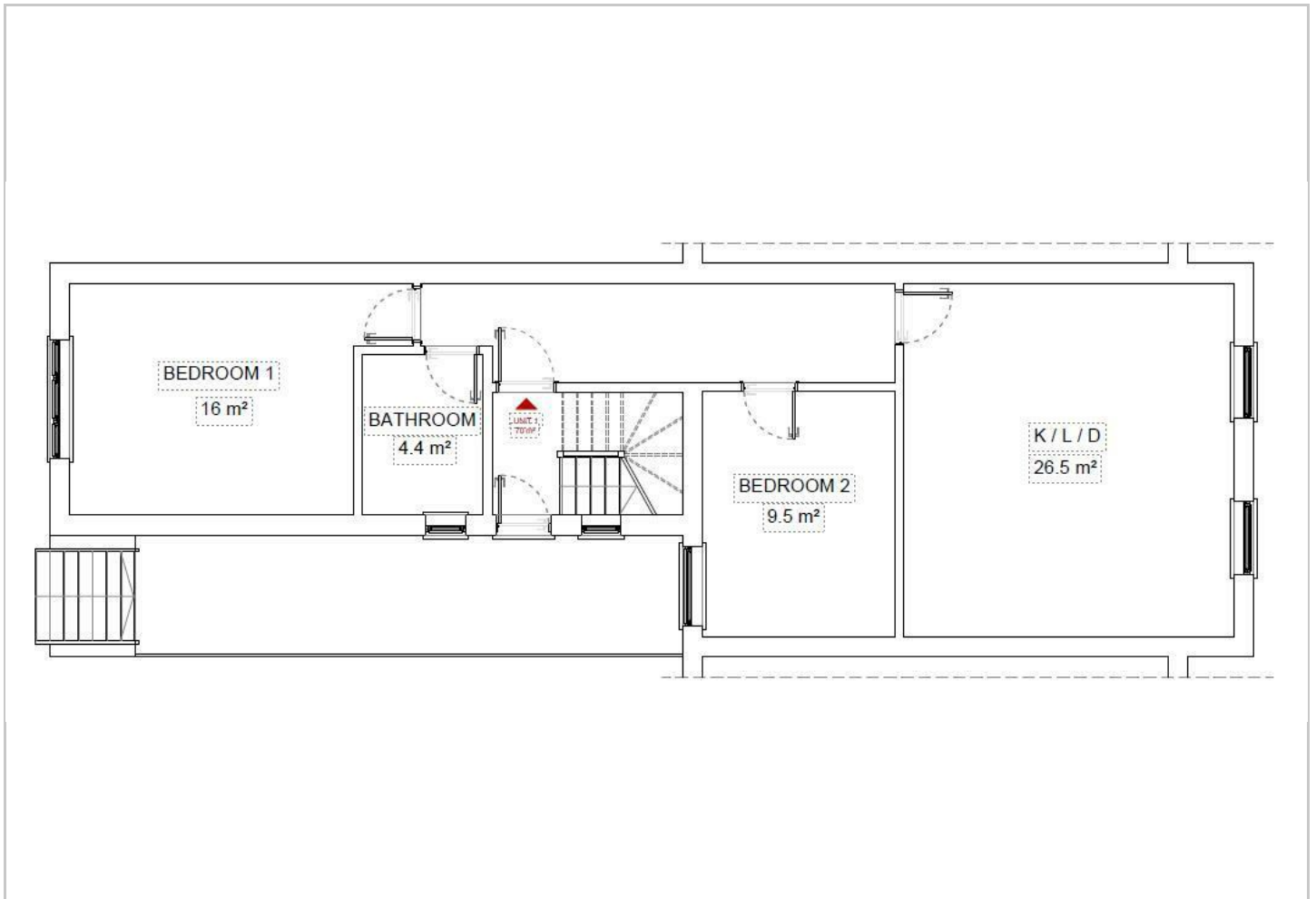
Hybrid Map



Terrain Map



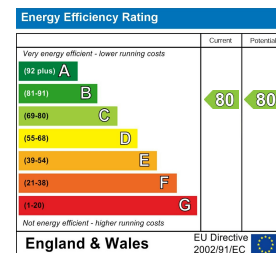
Floor Plan



Viewing

Please contact our Open Estates - Sales Office on 01923 537 111 if you wish to arrange a viewing appointment for this property or require further information.

Energy Efficiency Graph



These particulars, whilst believed to be accurate are set out as a general outline only for guidance and do not constitute any part of an offer or contract. Intending purchasers should not rely on them as statements of representation of fact, but must satisfy themselves by inspection or otherwise as to their accuracy. No person in this firm's employment has the authority to make or give any representation or warranty in respect of the property.