



Buckingham Gate, St James's, SW1E 6JP

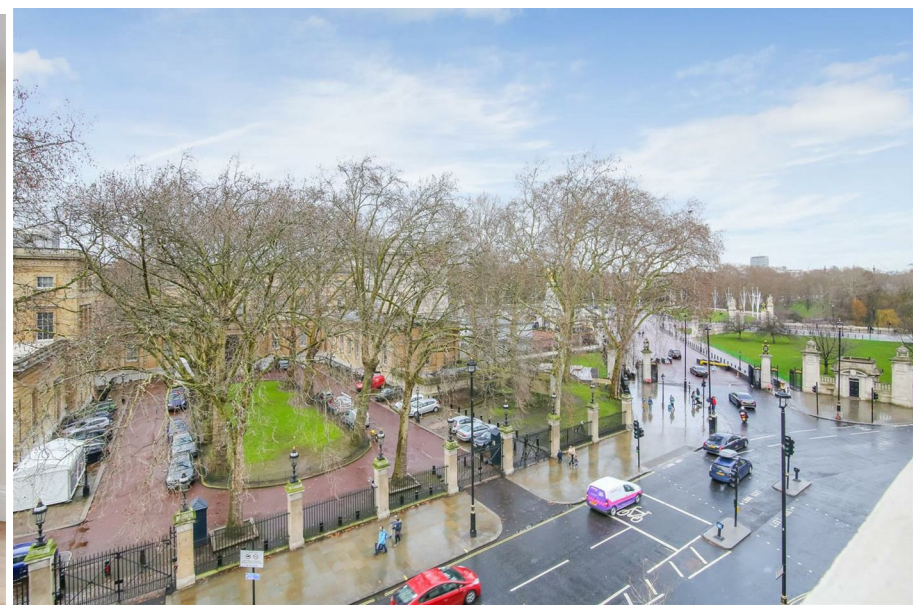
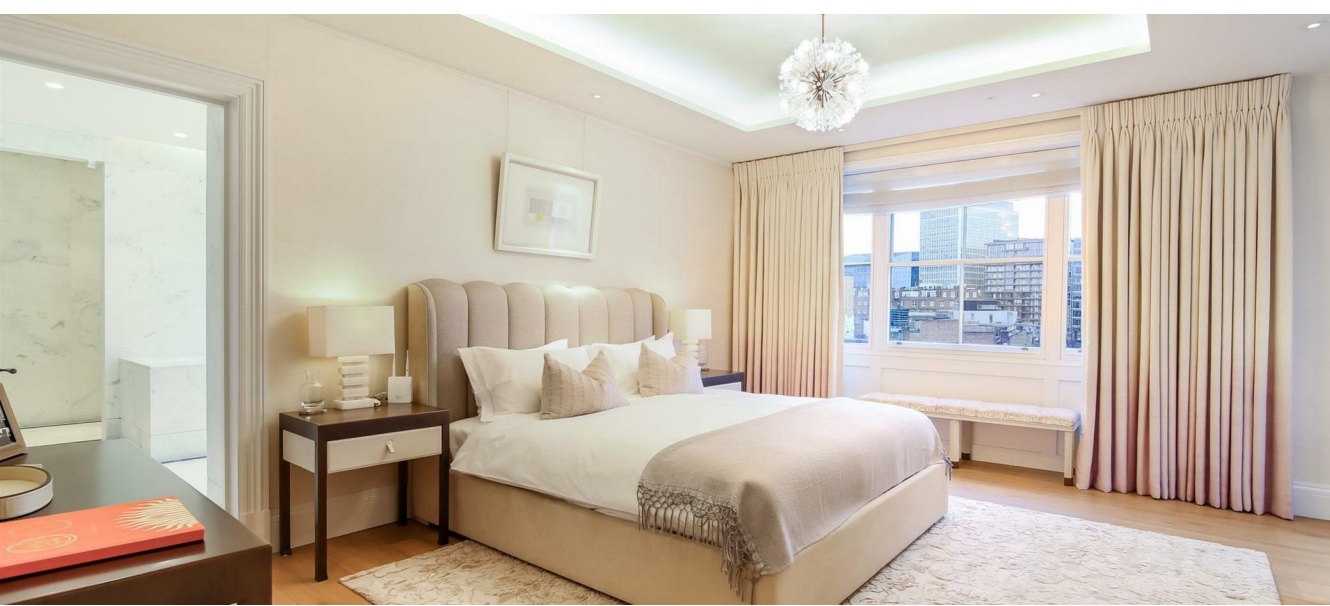


Buckingham Gate

St James's, SW1E 6JP

- 24 Hour Uniformed Security & Concierge
- Stunning White Georgian Stucco Fronted Building
- Two Reception Rooms, Dining Room, Eat-In Fully Integrated Kitchen, Utility Room, Three Outdoor Terraces,
- Ceiling Heights Approximately 15 Ft
- Two Allocated Parking Spaces
- CCTV Covering The Entire Building
- 5,189 Sq Ft (482 Sq Meters)
- Apartment Approximately 60 Ft Wide, Terraces Views Over Buckingham Palace
- Internal Passenger Lift to All Floors
- Air Conditioning, Underfloor Heating, Digital Home Automation System





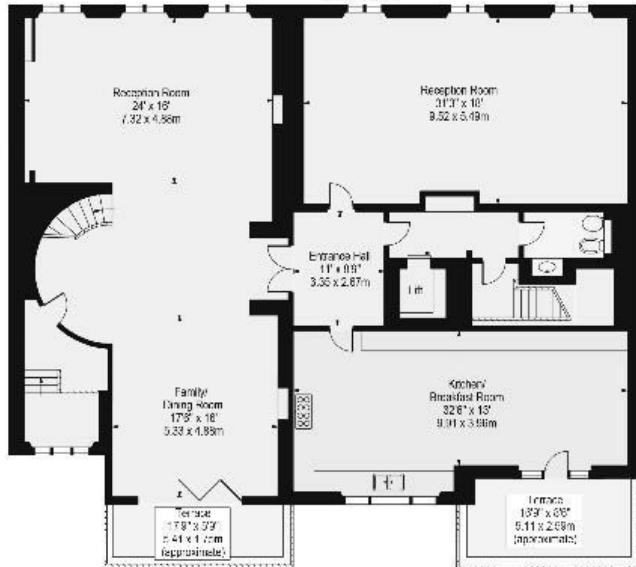


Buckingham Gate

Approx. Gross Internal Area 5189 Sq Ft - 482.07 Sq M
(Including Utility Room)

Approx. External Area Of Utility Room 236 Sq Ft - 21.95 Sq M

Approx. External Area Of Terraces 494 Sq Ft - 45.89 Sq M



For Illustration Purposes Only - Not To Scale

