



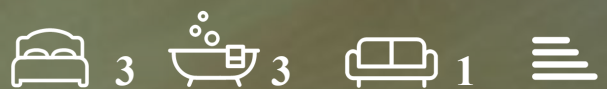
KNIGHTSBRIDGE
PRIME PROPERTY



North Row

Mayfair, W1K 7DU

£2,192 Per Week



North Row



Description

Large Two/Three Double Bedrooms, Two Bathrooms Apartment, Situated Within This Much Sought After 24 Hour Portered Building, Just Off Park Lane, In Exclusive Mayfair.

Unfurnished.

Internal Floor Area Of 1,598 Sq Ft (149 Sq Meters),

Large Reception Room, Separate Fully Integrated Eat-In Designer Kitchen, Excellent Views Over Marble Arch And Hyde Park From All Windows.

Flexible Room Which Can Be Used As Third Bedroom Or Separate Office.

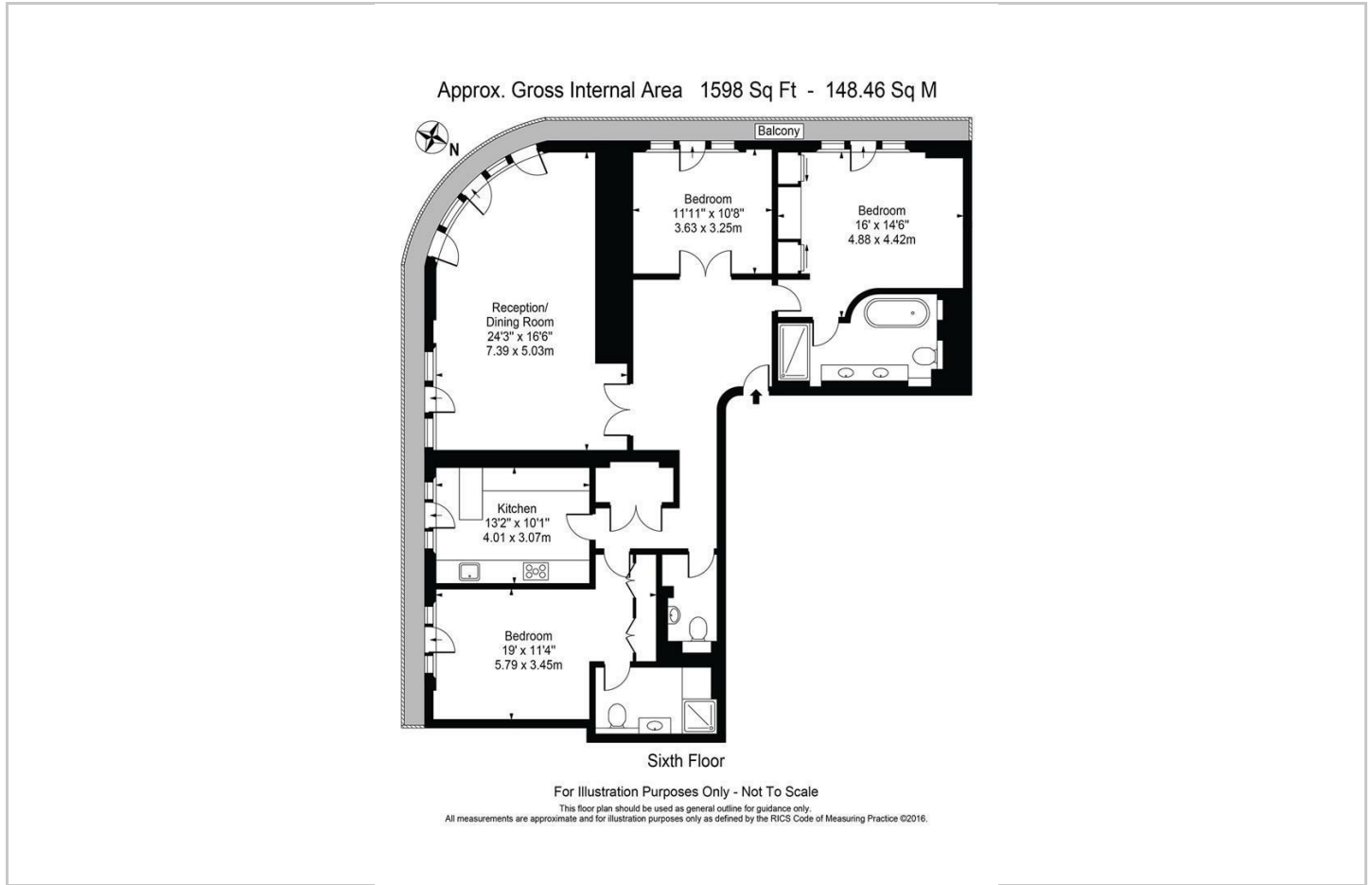
Located On The Sixth Floor, With Lifts Access. Air Conditioning In All Rooms.

- 24 Hour Security & Concierge
- Two/Three Double Bedrooms, Two Bathrooms
- 1,598 Sq Ft (149 Sq Meters)
- Unfurnished
- Allocated Underground Parking Space
- Excellent Views Over Marble Arch And Hyde Park
- Sixth Floor With Lifts Access
- Air Conditioning In All Rooms
- Gymnasium, Steam/Sauna Room, & Swimming Pool
- Hyde Park's Entrance Just Opposite

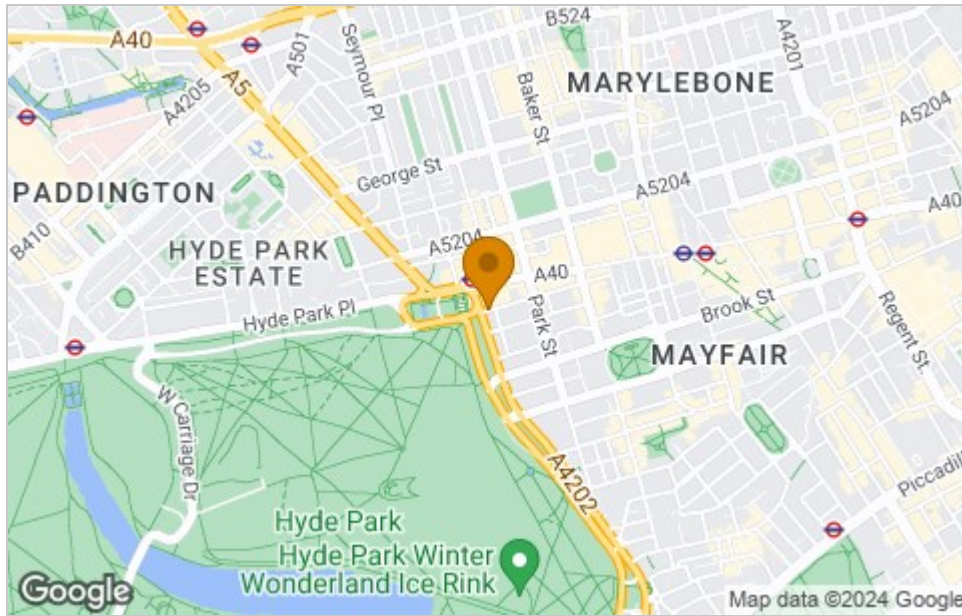




Floor Plan



Area Map



Viewing

Please contact our Knightsbridge Prime Property Office on +44 20 8051 4200 if you wish to arrange a viewing appointment for this property or require further information.

These particulars, whilst believed to be accurate are set out as a general outline only for guidance and do not constitute any part of an offer or contract. Intending purchasers should not rely on them as statements of representation of fact, but must satisfy themselves by inspection or otherwise as to their accuracy. No person in this firm's employment has the authority to make or give any representation or warranty in respect of the property.

Knightsbridge Prime Property, 1 Knightsbridge Green, Knightsbridge, London, SW1X 7QA
Tel: +44 20 8051 4200 Email: enquiries@knightsbridgeprimeproperty.com

Energy Efficiency Graph

