



KNIGHTSBRIDGE  
PRIME PROPERTY



Chester Square  
Belgravia, London  
£7,500 Per Week



# Chester Square Chester Square, Belgravia, London, SW1W 9HJ

Stunning 4 Bedroom Family Home, Spanning Approximately 4,300 Sq Ft / 400 Sq M. Located On This Highly Sought After Belgravia Garden Square With The Fabulous Addition Of The Rear Mews House.

This Fantastic Property Provides Multiple Entertaining Spaces Including Separate Formal Dining & Reception Room. Furthermore, A Kitchen With Island, Kitchenette / Bar & Industrial Utility Laundry Room.

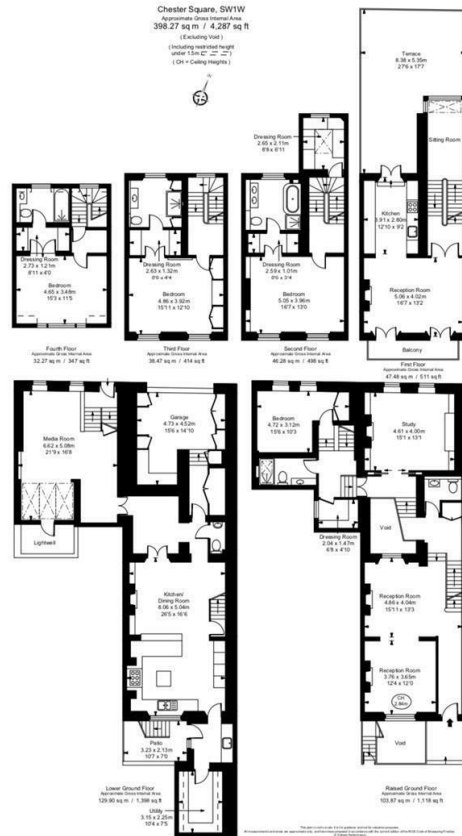
With Four Bathrooms, Plus Two Guest Cloakrooms.

Air Conditioning In The Bedrooms.

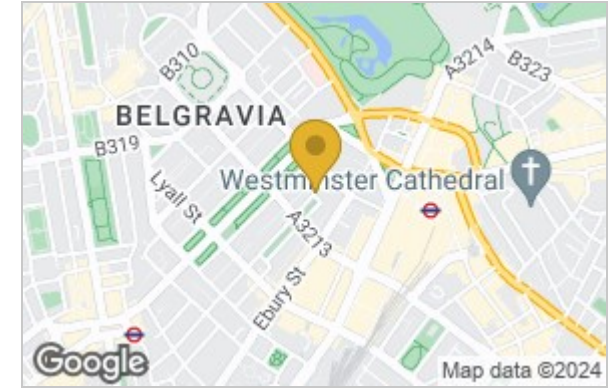
The Resident Benefits From Access To The Rear Mews House Offering Off Street Parking & Security Facilities. There Is The Ability To Get Further Parking In The Mews. Awaiting Photographs!

Westminster Council  
Tax Band H

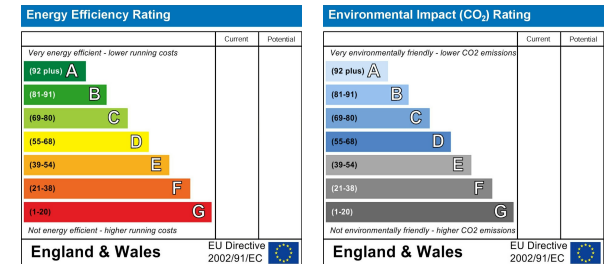
## Floor Plan



## Area Map



## Energy Efficiency Graph



These particulars, whilst believed to be accurate are set out as a general outline only for guidance and do not constitute any part of an offer or contract. Intending purchasers should not rely on them as statements of representation of fact, but must satisfy themselves by inspection or otherwise as to their accuracy. No person in this firm's employment has the authority to make or give any representation or warranty in respect of the property.

Knightsbridge Prime Property, 25 North Row, London, W1K 6DJ  
Tel: 020 3691 6235 Email: enquiries@knightsbridgeprimeproperty.com