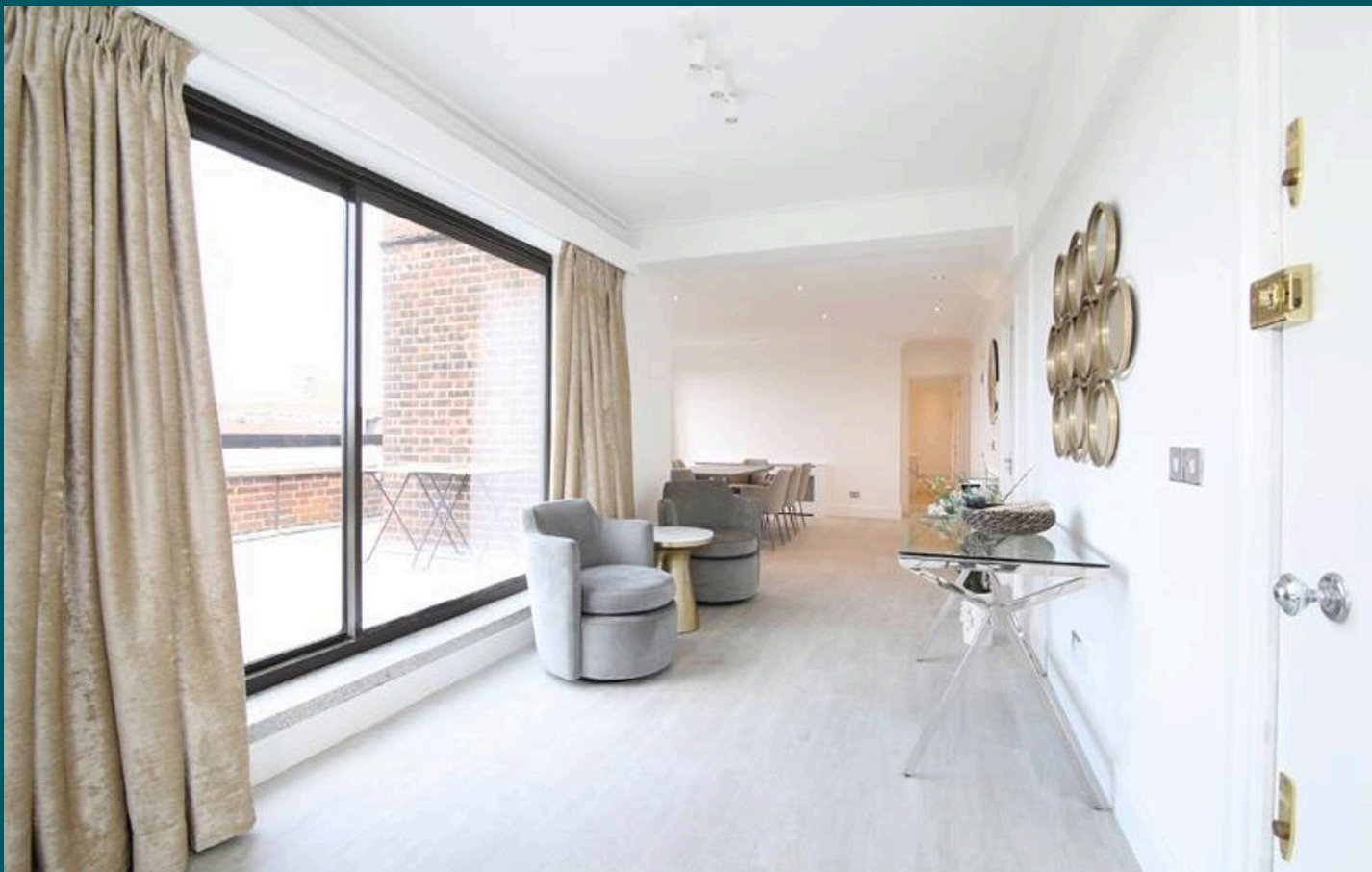




**Porchester Gate, Bayswater Road W2**  
London

£5,250,000 | £10,833 pcm



Porchester Gate, Bayswater Road W2,  
London

Stunning 4-bed sub-penthouse opposite Hyde Park, with panoramic terrace. Recently refurbished, 1888 sq ft, 24-hour portered building. Ideal layout, park views, near tube station & amenities.

Council Tax band: H

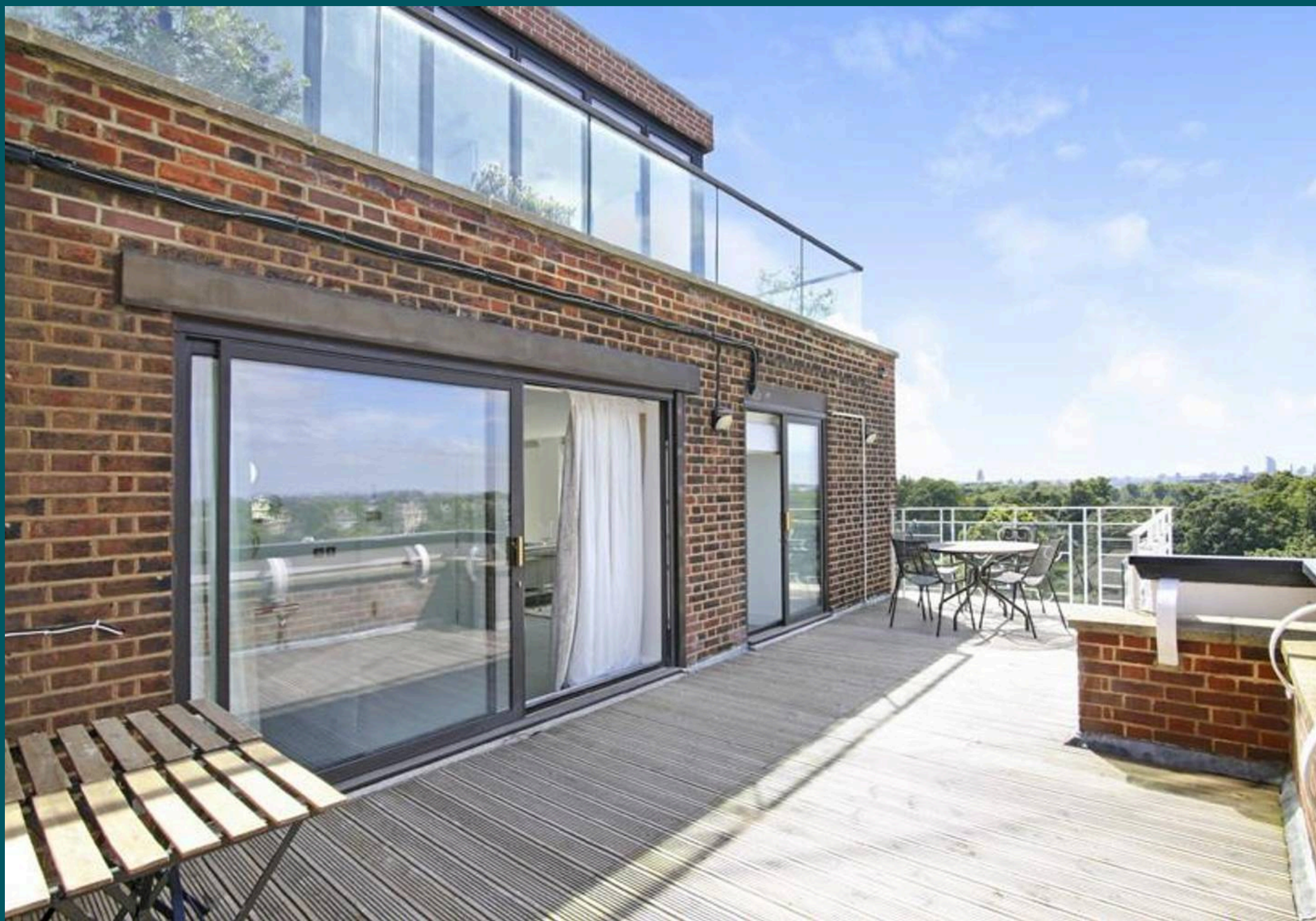
EPC Energy Efficiency Rating: C

EPC Environmental Impact Rating: D

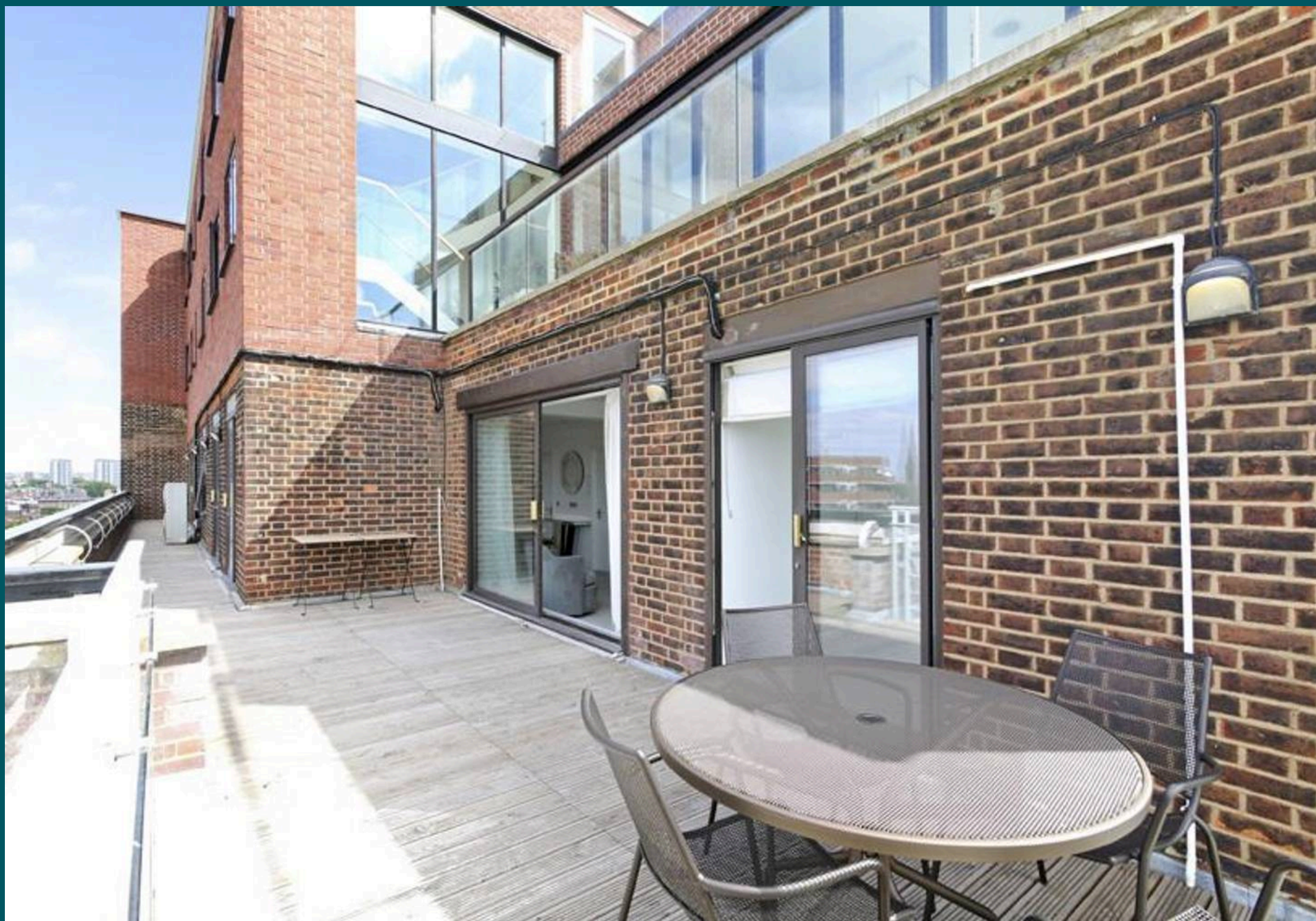
- Recently refurbished luxury sub-penthouse in a prestigious 24-hour portered building
- Prime location directly opposite Hyde Park, offering unmatched views
- Spacious 1,888 sq ft (175.40 sq m) of internal living space on higher floor
- Grand 31.3 ft reception room, separate 15.9 ft dining room, and designer kitchen
- Four generously sized bedrooms, each with en-suite bathrooms
- Guest cloakroom for added convenience
- Expansive 78 ft x 11 ft terrace with panoramic views of Hyde Park and London skyline
- Just 2 minutes from Queensway Station (Central Line) and close to Bayswater & Notting Hill Gate





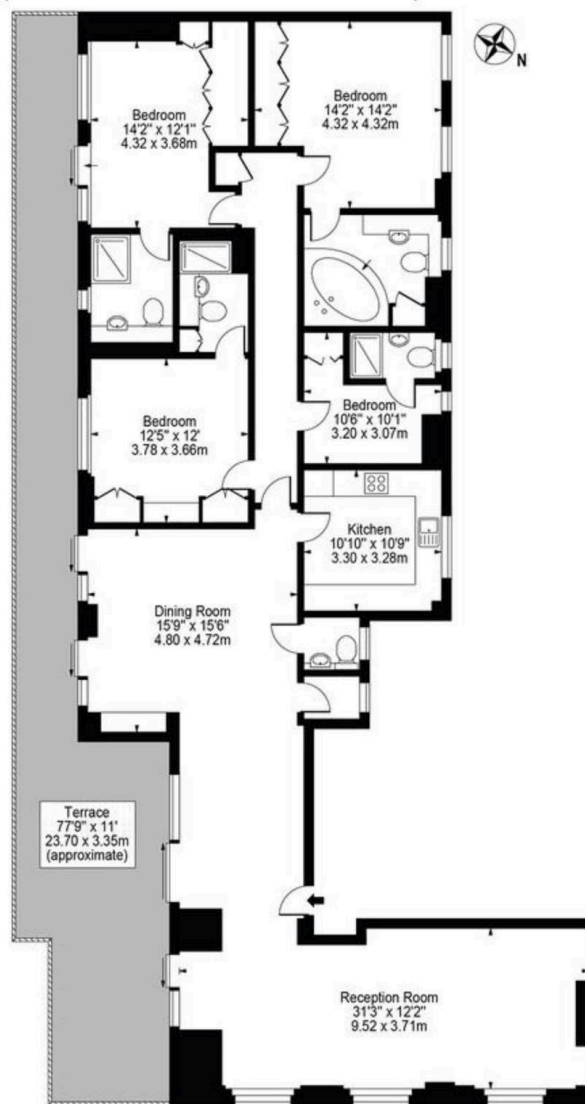








Approx. Gross Internal Area 1888 Sq Ft - 175.40 Sq M



**Ninth Floor**

For Illustration Purposes Only - Not To Scale

[www.interdesignphotography.com](http://www.interdesignphotography.com)

This floor plan should be used as general outline for guidance only.  
All measurements are approximate and for illustration purposes only as defined by the RICS Code of Measuring Practice ©2016.





## Knightsbridge Prime Property

1 Knightsbridge Green, London – SW1X 7QA

• 020 8051 4200

enquiries@knightsbridgeprimeproperty.com

• [knightsbridgeprimeproperty.com](https://www.knightsbridgeprimeproperty.com)