



KNIGHTSBRIDGE  
PRIME PROPERTY



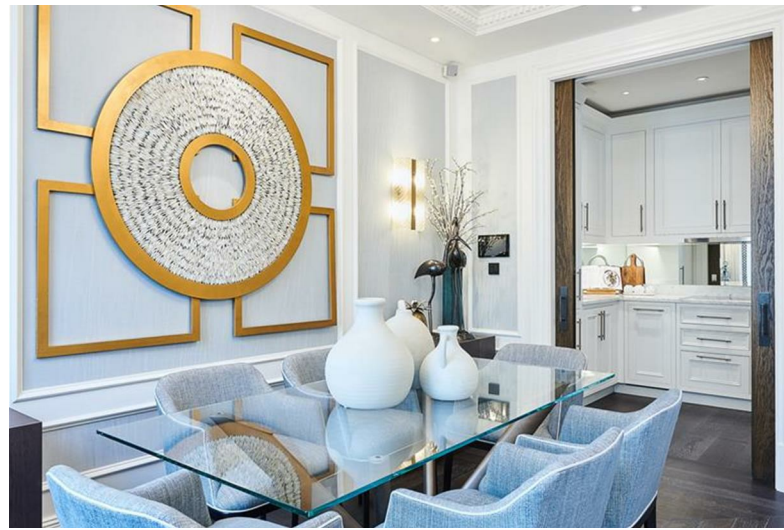
# Prince Of Wales Terrace

Kensington, W8 5PG

£2,800 Per Week



# Prince Of Wales Terrace



## Description

Newly Refurbished Two Bedroom, Two Bathroom Apartment, Located in This Beautiful White Stucco Fronted Georgian Grade II Listed Building In South Kensington, One Minute From Hyde Park.

Accommodation Spans Approximately 854 Sq Ft / 79.3 Sq M, & Located On The 2nd Floor Of This Grand Period Conversion Building.

The Apartment Comprises Of A Spacious Reception Room With Wooden Flooring Throughout, Tuscan Calacatta Marble Worktops, and Gaggenau Appliances. Two Large Bedrooms, Both Ensuite With Underfloor Heating,

Further Benefits Include, Crestron Home Automation System, Sound And Cooling System.

Fantastic Location, A Short Walk Away From Hyde Park





# Floor Plan

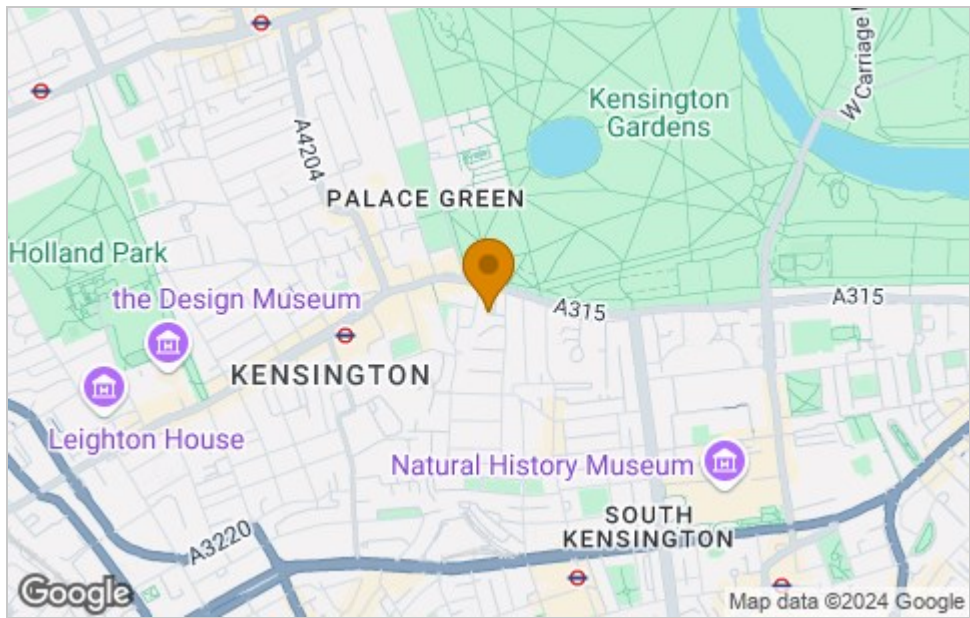
SECOND FLOOR

Key :-  
W - Wardrobe  
JB - Juliette Balcony

APPROX. GROSS INTERNAL AREA \*  
850 Ft<sup>2</sup> - 78.97 M<sup>2</sup>

<small>Property Details:</small> <b>APARTMENT H</b> 21-22 PRINCE OF WALES TERRACE LONDON W6 5PQ	<small>Surveyed and Drawn By:</small> <div style="background-color: green; color: white; padding: 2px; font-weight: bold; font-size: 1.2em;">BKR</div> <small>Hideaway Work Space 1 Empire Mews London SW16 2BF</small>
<small>SCALE</small> 1:100 @ A4	<small>Tel:</small> 0345 257 2023 <small>info@bkrfloorplans.co.uk</small> <small>www.bkrfloorplans.co.uk</small>
<small>Plans Drawn:</small> 24.08.2020	<small>© BKR 2020</small>

# Area Map



# Viewing

Please contact our Knightsbridge Prime Property Office on +44 20 8051 4200 if you wish to arrange a viewing appointment for this property or require further information.

# Energy Efficiency Graph

Energy Efficiency Rating		
	Current	Potential
Very energy efficient - lower running costs		
(92 plus) <b>A</b>		
(81-91) <b>B</b>		
(69-80) <b>C</b>	77	78
(55-68) <b>D</b>		
(39-54) <b>E</b>		
(21-38) <b>F</b>		
(1-20) <b>G</b>		
Not energy efficient - higher running costs		
<b>England &amp; Wales</b>		EU Directive 2002/91/EC
Environmental Impact (CO <sub>2</sub> ) Rating		
	Current	Potential
Very environmentally friendly - lower CO <sub>2</sub> emissions		
(92 plus) <b>A</b>		
(81-91) <b>B</b>		
(69-80) <b>C</b>		
(55-68) <b>D</b>		
(39-54) <b>E</b>		
(21-38) <b>F</b>		
(1-20) <b>G</b>		
Not environmentally friendly - higher CO <sub>2</sub> emissions		
<b>England &amp; Wales</b>		EU Directive 2002/91/EC

These particulars, whilst believed to be accurate are set out as a general outline only for guidance and do not constitute any part of an offer or contract. Intending purchasers should not rely on them as statements of representation of fact, but must satisfy themselves by inspection or otherwise as to their accuracy. No person in this firms employment has the authority to make or give any representation or warranty in respect of the property.