



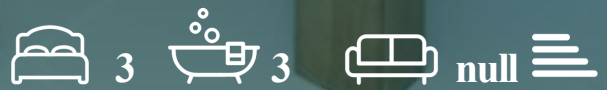
KNIGHTSBRIDGE  
PRIME PROPERTY



## Boydell Court

St John's Wood Park, NW8 6NJ

£1,200 Per Week



# Boydell Court



## Description

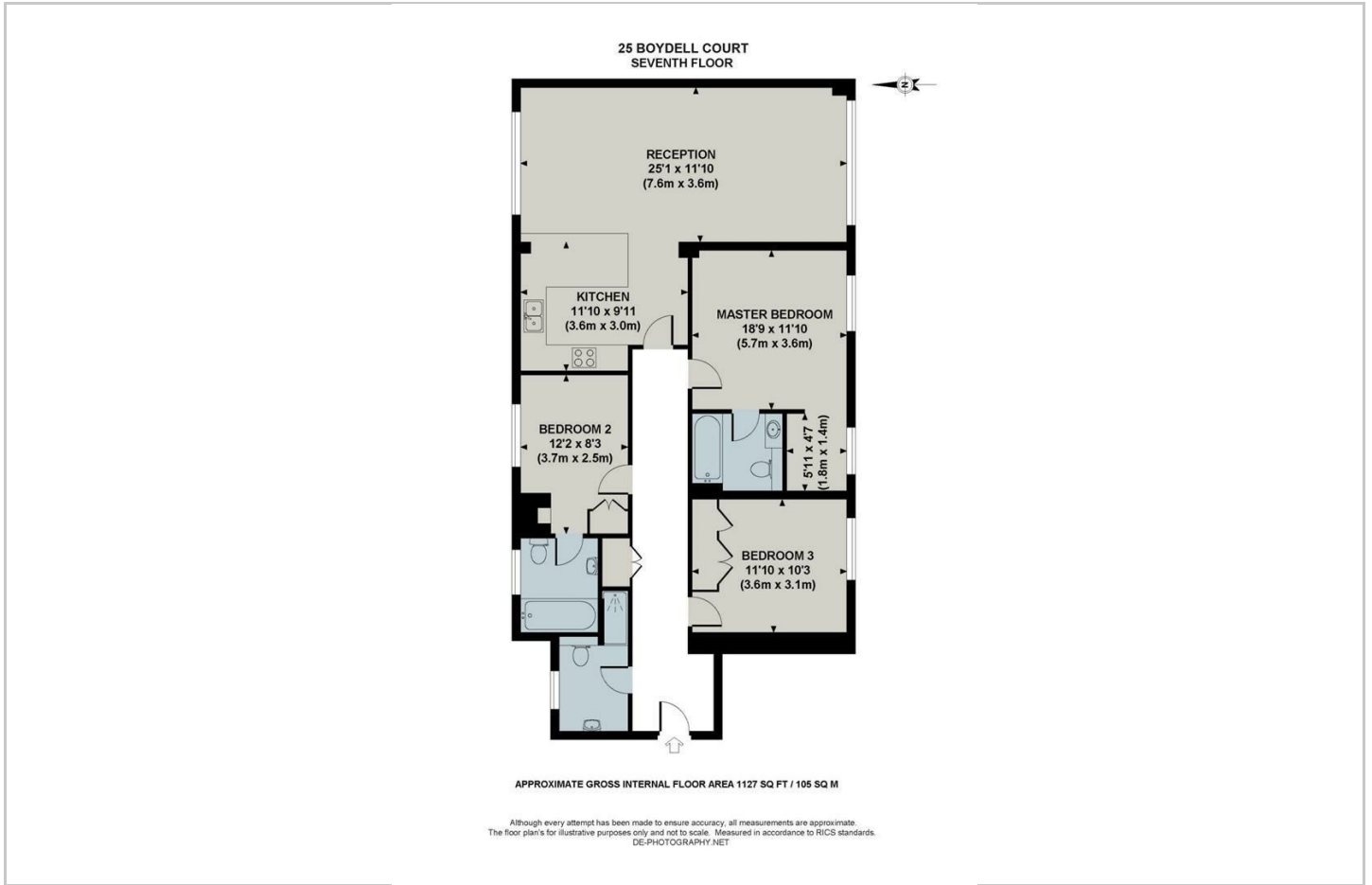
Brand Newly Developed Three Double Bedroom Apartment Available To Rent, Within This Sought After 24 Hr Portered Gated Development Spanning 1,062 Sq Ft (99 Sq Meters) Benefiting from Three Fully Tiled Bathrooms, a Separate Fully Fitted Designer Kitchen, Separate Spacious Living Room, Hallway & Cloakroom. Situated on the 2nd Floor, Air Conditioned, Solid Oak Wood Floors, Large Windows Providing Excellent Views, Interior Designed, with High Specifications throughout. Within a 24 Hr Portered Development. 10 Minutes Walk to St Johns Wood Tube.

- 24 Hour Uniformed Security & Concierge Service
- 2nd Floor (With Lift)
- Modern & Contemporary Interior Decor
- Lateral Apartment
- 1,062 Sq Ft (99 Sq Meters)
- Newly Developed Three Double Bedroom Apartment
- Air Conditioning/Climate Control
- Highly Specified With Designer Fittings & Fixtures
- Wood Floors & Marble Tiled Bathrooms
- Secure Parking Space

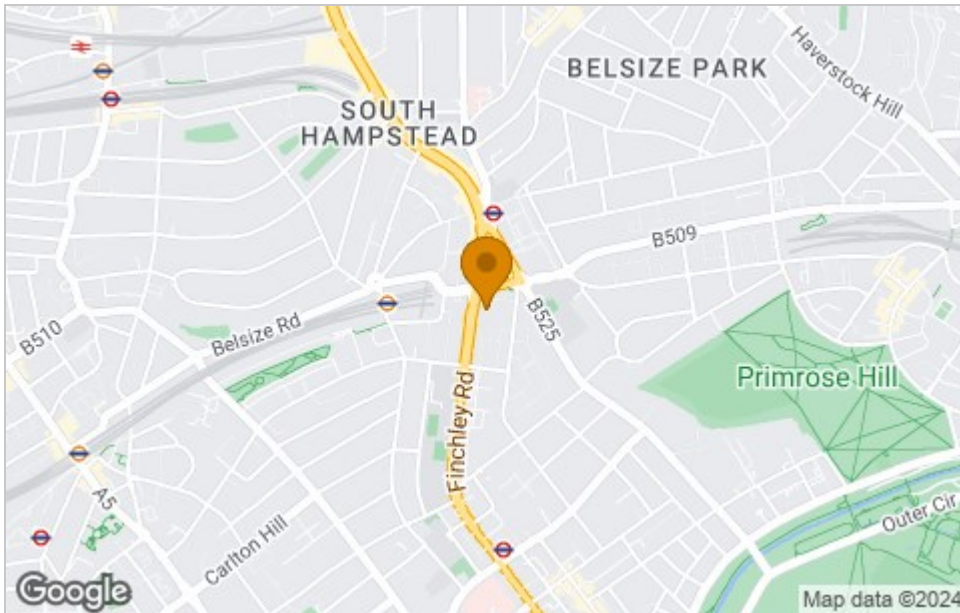




# Floor Plan



# Area Map



# Viewing

Please contact our Knightsbridge Prime Property Office on +44 20 8051 4200 if you wish to arrange a viewing appointment for this property or require further information.

These particulars, whilst believed to be accurate are set out as a general outline only for guidance and do not constitute any part of an offer or contract. Intending purchasers should not rely on them as statements of representation of fact, but must satisfy themselves by inspection or otherwise as to their accuracy. No person in this firm's employment has the authority to make or give any representation or warranty in respect of the property.

Knightsbridge Prime Property, 1 Knightsbridge Green, Knightsbridge, London, SW1X 7QA  
 Tel: +44 20 8051 4200 Email: enquiries@knightsbridgeprimeproperty.com

# Energy Efficiency Graph

