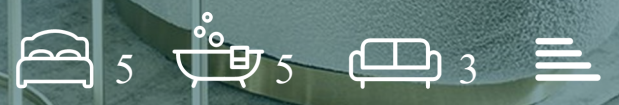




Herbert Crescent, Knightsbridge, SW1X 0HA

£35,000 Per Week





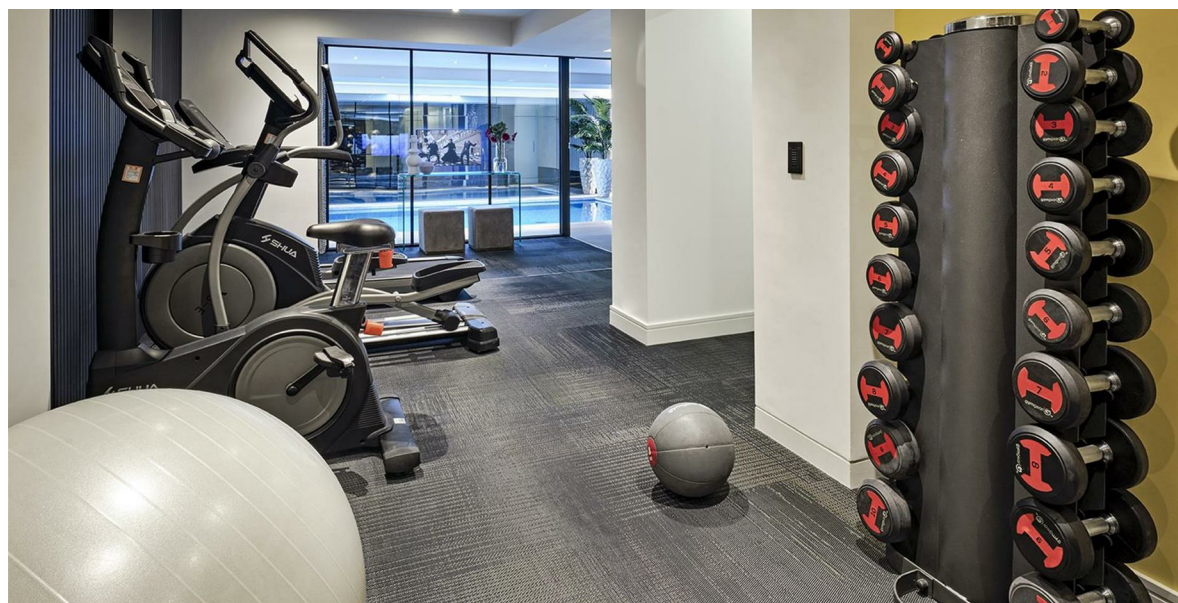
£35,000 Per Week

Herbert Crescent

Knightsbridge, SW1X 0HA

- Recently Developed House
- Four En-Suite Luxury Marble Tiled Bathrooms
- Gymnasium, Swimming Pool
- Passenger Lift
- Full Home Digital Automation Systems / Air Con / Underfloor Heating
- Five Bedrooms, Plus Office/Study
- 4,638 Sq Ft (431 Sq Meters)
- Two Reception Rooms, Two Dining Rooms
- Rear Patio Garden & Terrace





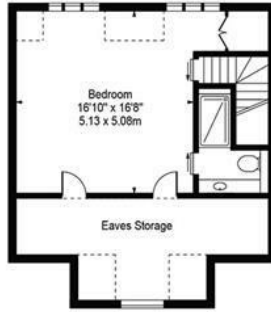


Approx. Total Internal Area 4638 Sq Ft - 430.88 Sq M

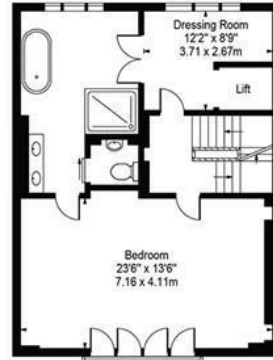
(Including Restricted Height Area & Eaves Storage)

Approx. Gross Internal Area 4430 Sq Ft - 411.56 Sq M

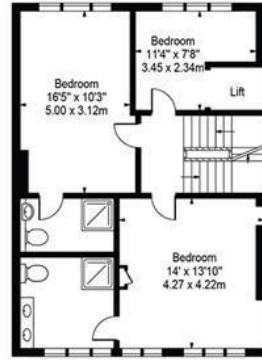
(Excluding Restricted Height Area & Eaves Storage)



Fourth Floor



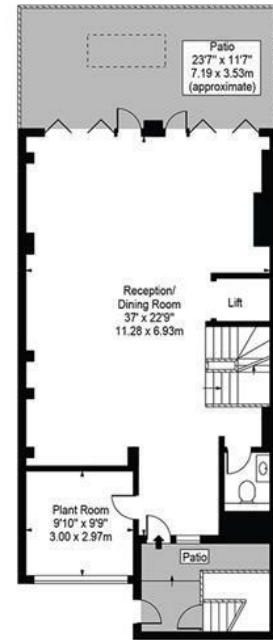
Third Floor



Second Floor



Lower Ground Floor



Ground Floor



First Floor

For Illustration Purposes Only - Not To Scale

This floor plan should be used as general outline for guidance only.

All measurements are approximate and for illustration purposes only as defined by the RICS Code of Measuring Practice ©2016.

