



KNIGHTSBRIDGE
PRIME PROPERTY



Prince Of Wales Terrace

Kensington, W8 5PG

£3,200 Per Week



Prince Of Wales Terrace



Description

Newly Refurbished Two Bedroom, Two Bathroom Apartment, Located in This Beautiful White Stucco Fronted Georgian Grade II Listed Building In South Kensington, One Minute From Hyde Park.

Accommodation Spans Approximately 1,136 Sq Ft / 105.53 Sq M, & Located On The 2nd Floor Of This Grand Period Conversion Building.

The Apartment Comprises Of A Spacious Reception Room With Wooden Flooring Throughout, Tuscan Calacatta Marble Worktops, and Gaggenau Appliances. Two Large Bedrooms, Both Ensuite With Underfloor Heating, North Facing Balcony Accessible From The Reception Room.

Further Benefits Include, Crestron Home Automation System, Sound And Cooling System.

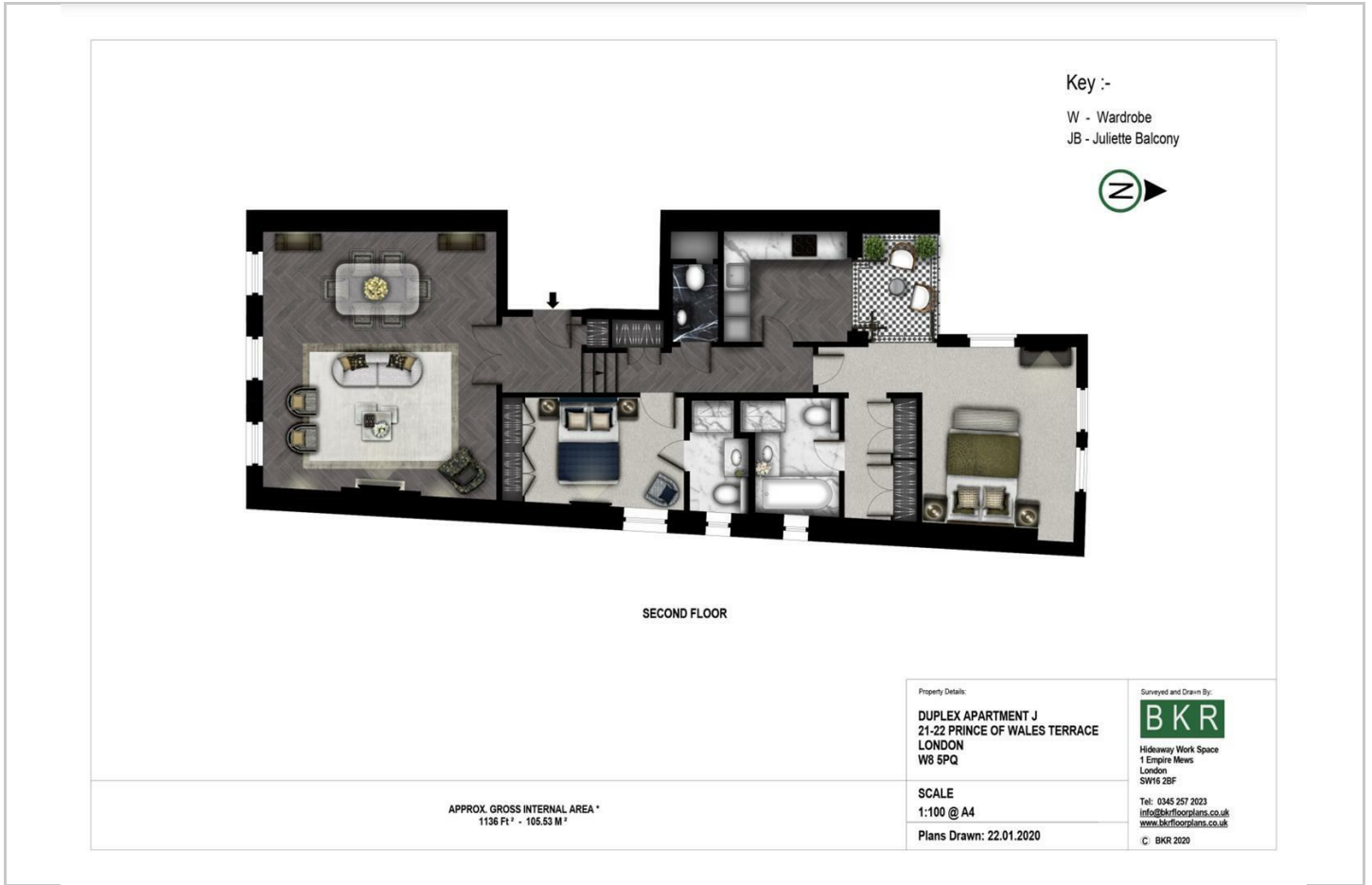
Fantastic Location, A Short Walk Away From Hyde Park

- 1,136 sq ft (105.53 sqm)
- North Facing Balcony
- Newly Refurbished
- Cooling System and Underfloor Heating
- 2 Bed, 2 Bath, And Guest Wash Room
- Crestron Home Automation System
- Gaggenau Kitchen Appliances

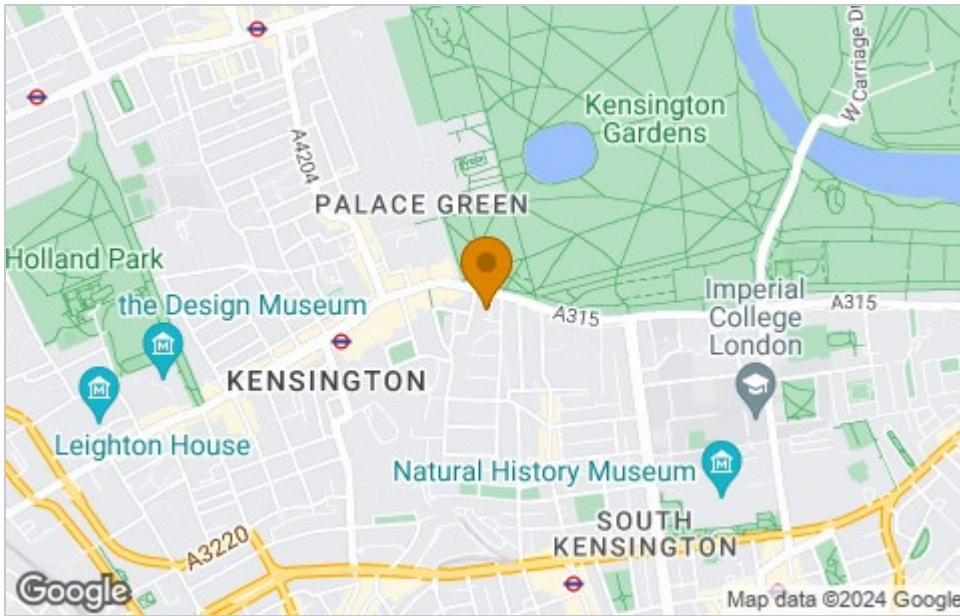




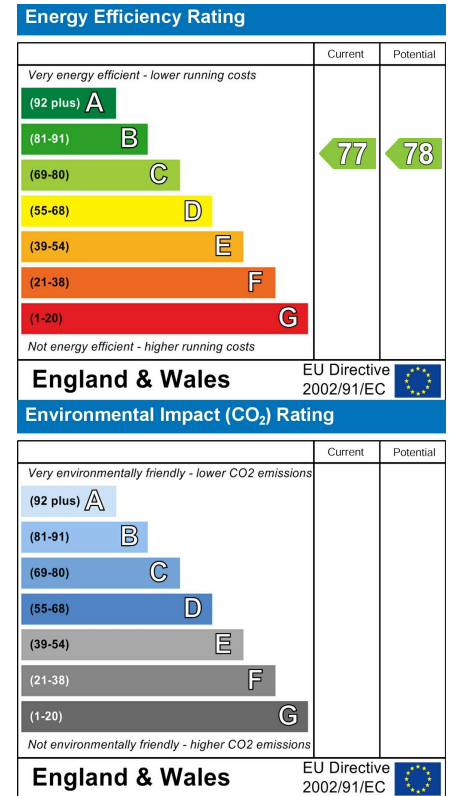
Floor Plan



Area Map



Energy Efficiency Graph



Viewing

Please contact our Knightsbridge Prime Property Office on 020 3691 6235 if you wish to arrange a viewing appointment for this property or require further information.

These particulars, whilst believed to be accurate are set out as a general outline only for guidance and do not constitute any part of an offer or contract. Intending purchasers should not rely on them as statements of representation of fact, but must satisfy themselves by inspection or otherwise as to their accuracy. No person in this firm's employment has the authority to make or give any representation or warranty in respect of the property.