



KNIGHTSBRIDGE
PRIME PROPERTY



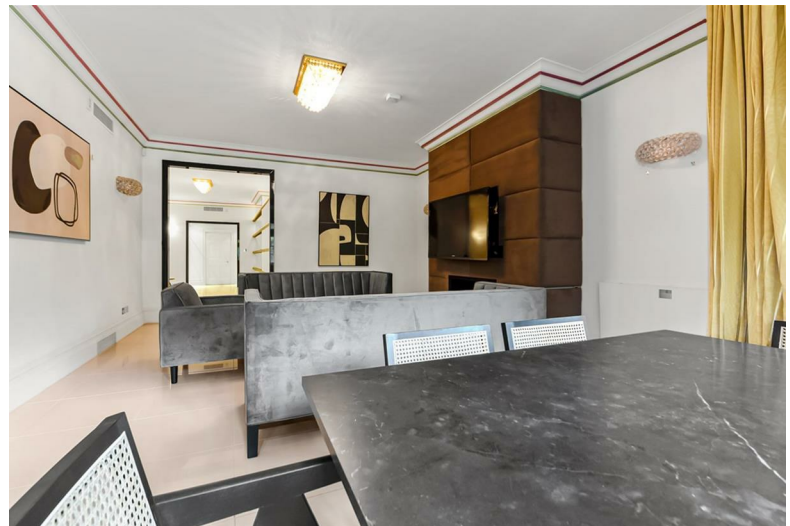
Knightsbridge

Knightsbridge, SW1X 7JW

£2,307 Per Week



Knightsbridge



Description

Introducing a beautifully renovated 4-bedroom Victorian apartment in Knightsbridge, London.

This elegant property offers a perfect blend of historic charm and modern luxury. Spanning 2,315 sq ft, it features a spacious master bedroom with ensuite and park views, overlooking Hyde Park. The apartment also includes a tastefully refurbished reception room, a fully equipped kitchen/dining area, and a generously sized lobby for entertaining guests.

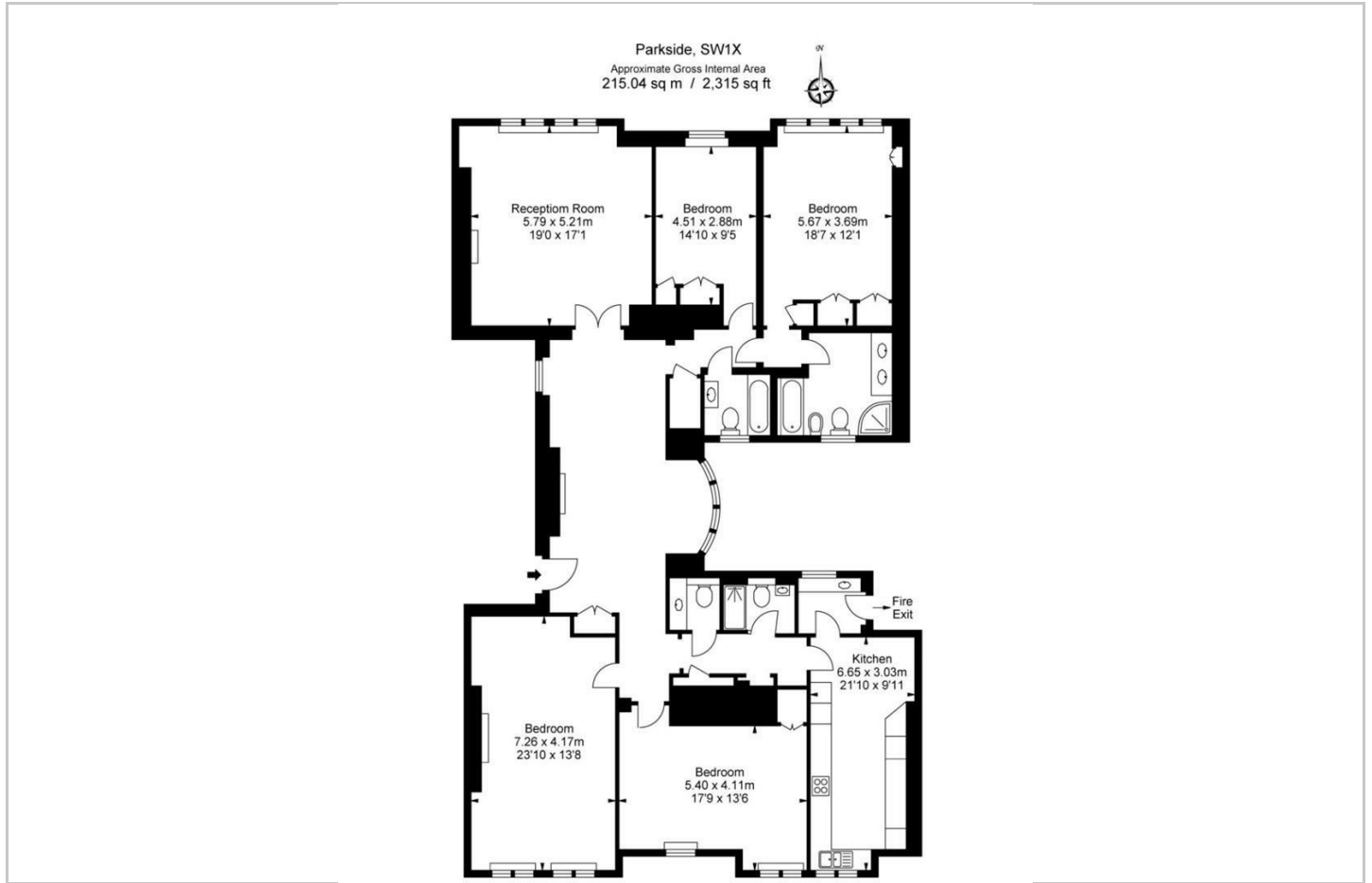
Conveniently located near Knightsbridge and Hyde Park Underground Stations, with Harrods just a 6-minute walk away.

- 24 hr Porter and Security
- Refurbished 4 Double Bedrooms 4 Bathrooms
- 2,315 sq ft / 215.07 sqm
- Brand New Furniture Package
- Large Outdoor Balcony Facing Hyde Park
- 1 Minutes Walk To Harvey Nichols & Harrods International Department Stores

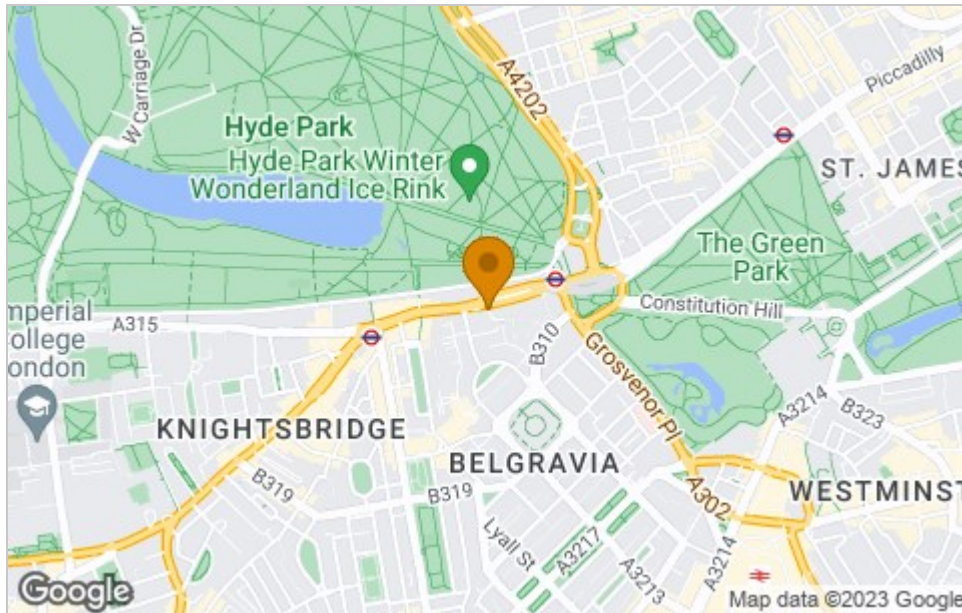




Floor Plan



Area Map



Viewing

Please contact our Knightsbridge Prime Property Office on 020 3691 6235 if you wish to arrange a viewing appointment for this property or require further information.

These particulars, whilst believed to be accurate are set out as a general outline only for guidance and do not constitute any part of an offer or contract. Intending purchasers should not rely on them as statements of representation of fact, but must satisfy themselves by inspection or otherwise as to their accuracy. No person in this firm's employment has the authority to make or give any representation or warranty in respect of the property.

Knightsbridge Prime Property, 25 North Row, London, W1K 6DJ
 Tel: 020 3691 6235 Email: enquiries@knightsbridgeprimeproperty.com

Energy Efficiency Graph

Energy Efficiency Rating		Current	Potential
Very energy efficient - lower running costs			
(92 plus) A			
(81-91) B			
(69-80) C			
(55-68) D			
(39-54) E			
(21-38) F			
(1-20) G			
Not energy efficient - higher running costs			
England & Wales		EU Directive 2002/91/EC	
Environmental Impact (CO ₂) Rating		Current	Potential
Very environmentally friendly - lower CO ₂ emissions			
(92 plus) A			
(81-91) B			
(69-80) C			
(55-68) D			
(39-54) E			
(21-38) F			
(1-20) G			
Not environmentally friendly - higher CO ₂ emissions			
England & Wales		EU Directive 2002/91/EC	