



Park Lane, Mayfair, W1K







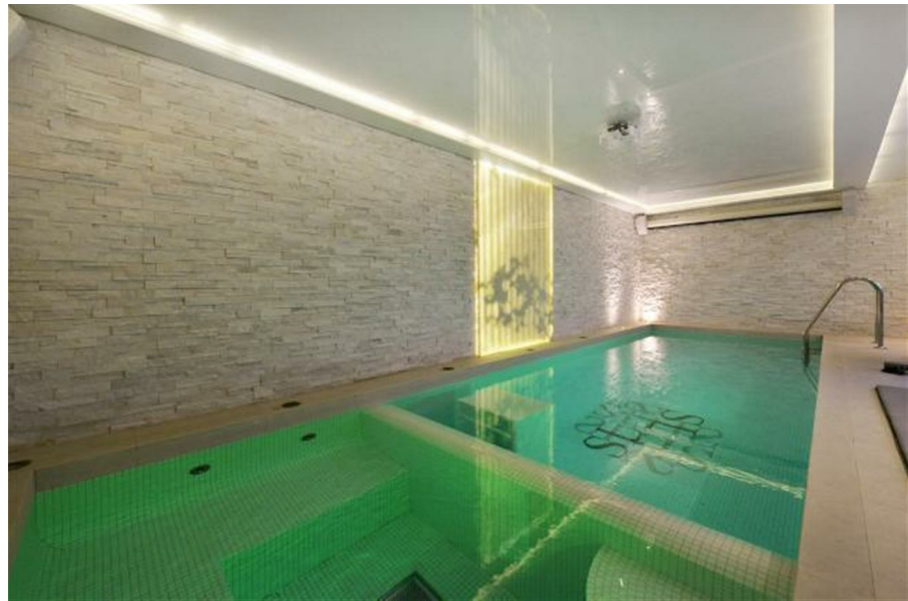
# Park Lane

Mayfair, W1K

- Daily Porter Service
- Refurbished & Interior Designed Four Double Bedrooms, Six Bathrooms
- Passenger Lift To All Floors
- Two Large Reception Rooms And Dining Room
- Swimming Pool, Gymnasium, Steam/Sauna Rooms, Washroom/Changing Room.
- Stunning Georgian Building
- Directly In Front Of Hyde Park
- 5,921 Sq Ft (550 Sq Meters)
- Air Conditioning
- Parking In Front Of The Building



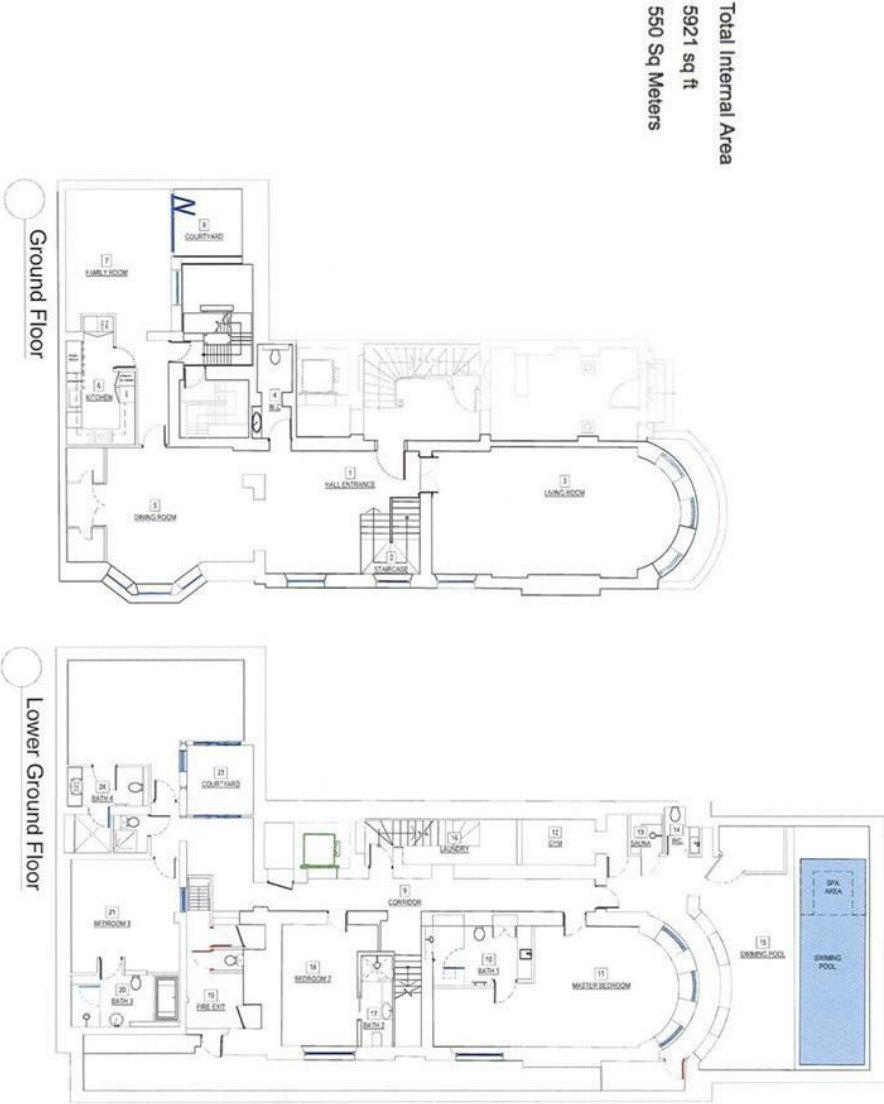








Floor Plans



Location Map

