



KNIGHTSBRIDGE
PRIME PROPERTY



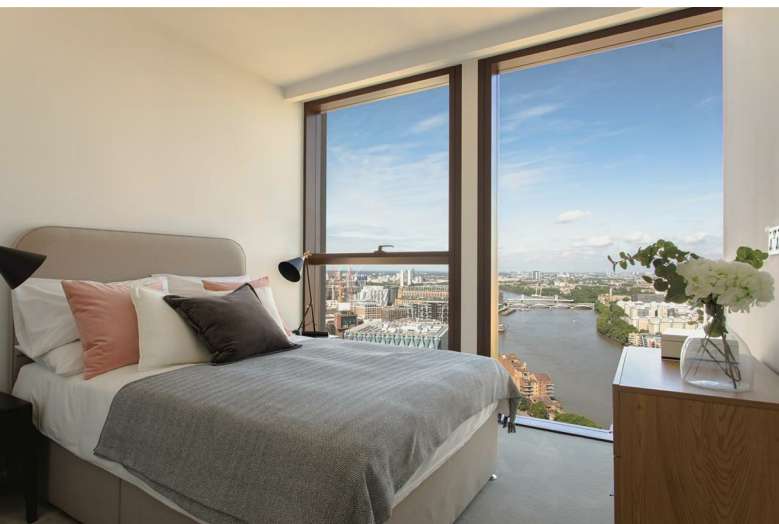
6 Carnation Wy

Nine Elms, SW8 5GZ

Asking Price £1,921,000



6 Carnation Wy



Description

This exquisite 3 bedroom apartment located in Thames City on the 31st floor presents a deluxe living experience within one of London's most captivating new complexes. The development's impressive residential towers offer awe-inspiring views of the River Thames and London's breathtaking skyline, among other outstanding features.

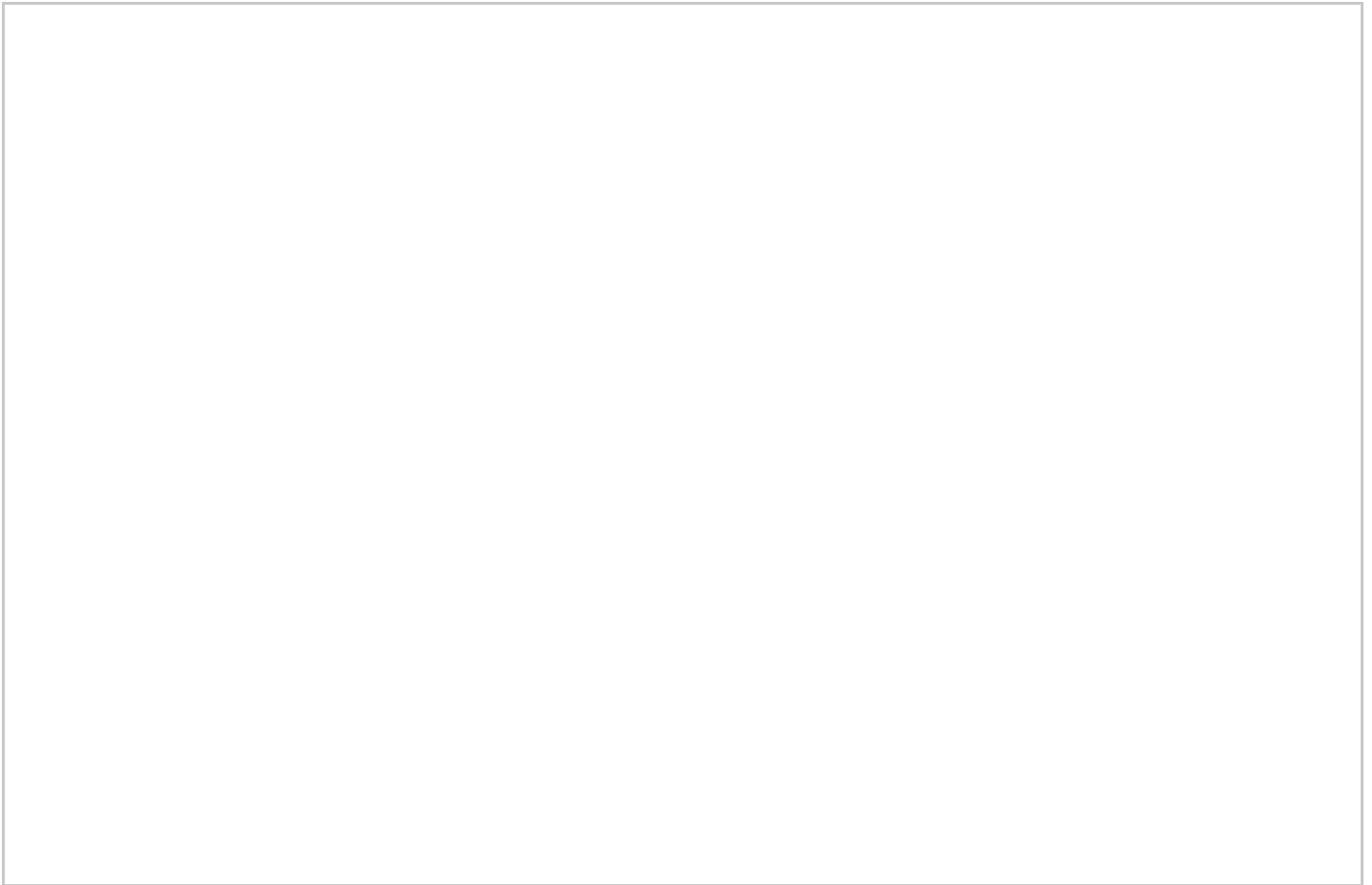
Apart from the apartment's lavish living quarters, occupants of Thames City can take advantage of an array of top-notch facilities. These comprise a 24/7 concierge service, a cutting-edge fitness center, a swimming pool, and a sauna. The complex also includes a communal garden, a private cinema, and a residents' lounge, providing the ideal venue for socializing with loved ones.

Thames City is situated in the dynamic Nine Elms neighborhood, which is rapidly gaining popularity as one of London's most desirable areas. The development is conveniently located just a short stroll from a selection of trendy bars, restaurants, and cafes and is in close proximity to several parks and green spaces.

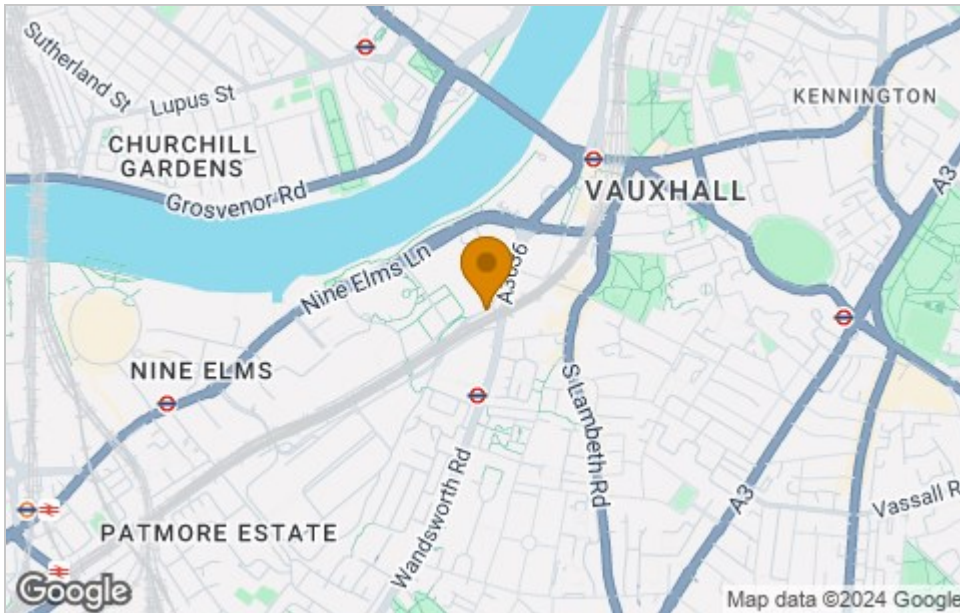




Floor Plan



Area Map



Viewing

Please contact our Knightsbridge Prime Property Office on +44 20 8051 4200 if you wish to arrange a viewing appointment for this property or require further information.

These particulars, whilst believed to be accurate are set out as a general outline only for guidance and do not constitute any part of an offer or contract. Intending purchasers should not rely on them as statements of representation of fact, but must satisfy themselves by inspection or otherwise as to their accuracy. No person in this firm's employment has the authority to make or give any representation or warranty in respect of the property.

Knightsbridge Prime Property, 1 Knightsbridge Green, Knightsbridge, London, SW1X 7QA
 Tel: +44 20 8051 4200 Email: enquiries@knightsbridgeprimeproperty.com

Energy Efficiency Graph

