



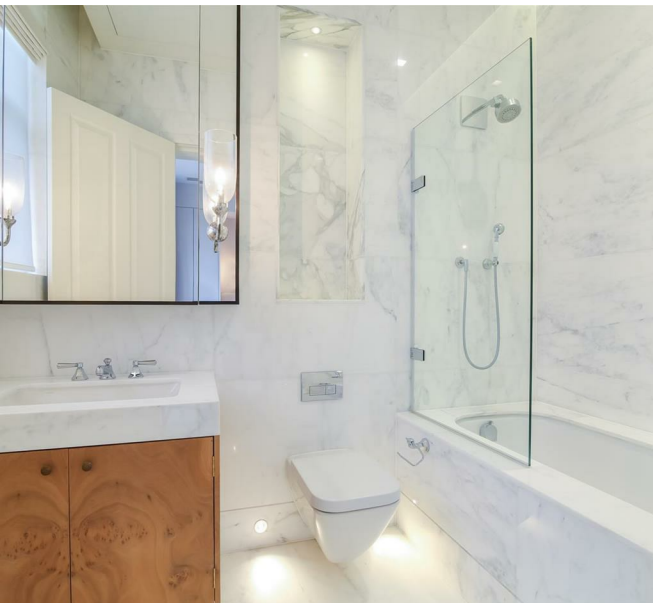
Buckingham Gate, Westminster, SW1E 6JP

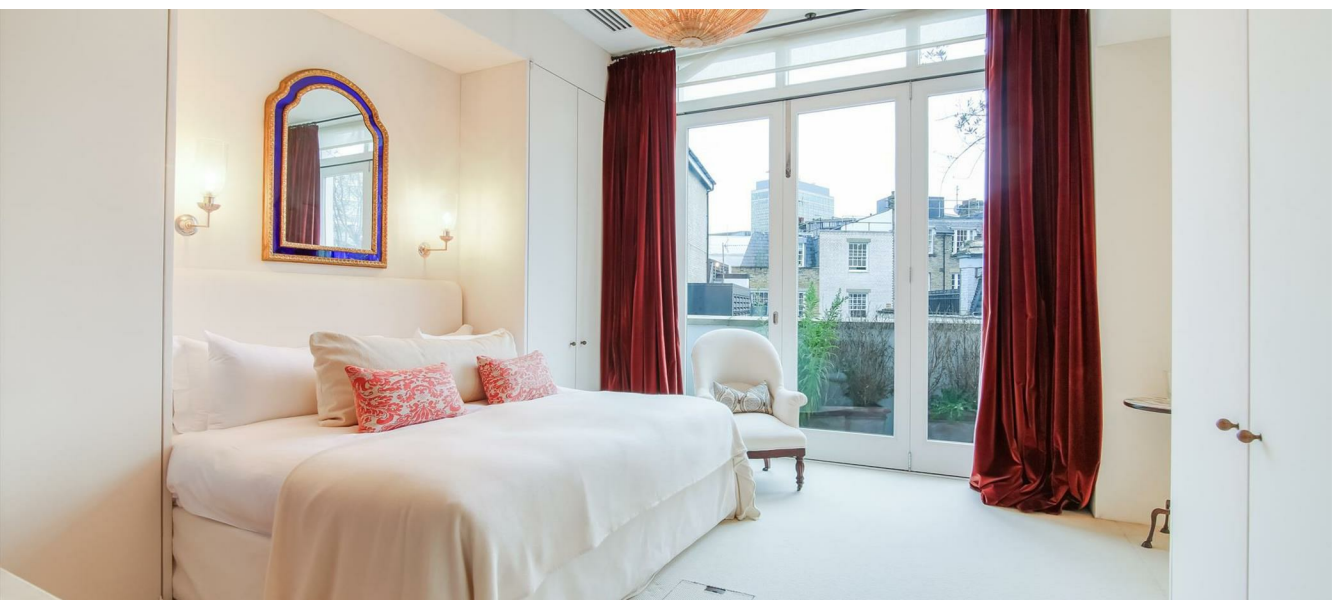


Buckingham Gate

Westminster, SW1E 6JP

- 24 Hour Concierge
- Private Entrance
- Two Reception Rooms, Dining Room, Eat-In Fully Integrated Kitchen, Utility Room, Three Outdoor Terraces,
- Apartment Approximately 60 Ft Wide
- Air Conditioning, Underfloor Heating, Digital Home Automation System
- Stunning White Georgian Stucco Fronted Building
- 4,663 Sq Ft (433 Sq Meters)
- Outdoor Space
- Ceiling Height Approximately 15 Ft
- Facing Buckingham Palace

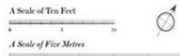
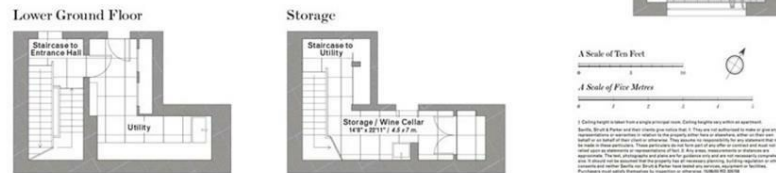






Floor Plans

Location Map



1 Ceiling heights shown from single or double track.
 2 Balcony, Balustrade and other details are indicated by a line. The actual construction of these details is not shown.
 3 The location of the property is shown in relation to the surrounding streets. The actual location of the property is not shown.
 4 The location of the property is shown in relation to the surrounding streets. The actual location of the property is not shown.
 5 The location of the property is shown in relation to the surrounding streets. The actual location of the property is not shown.
 6 The location of the property is shown in relation to the surrounding streets. The actual location of the property is not shown.
 7 The location of the property is shown in relation to the surrounding streets. The actual location of the property is not shown.

STAFFORD PLACE

Number of Floors	2 (plus 2 ancillary)
Bedrooms	3
Internal Floor Area, sq. ft.	4,663
sq. m.	433
Terrace Area, sq. ft.	255
sq. m.	24
Total Floor Area, sq. ft.	4,918
sq. m.	457
Raised Ground Ceiling Height†, ft.	12' 6"
m.	3.8
First Floor Ceiling Height†, ft.	12' 2"
m.	3.7

