



KNIGHTSBRIDGE
PRIME PROPERTY



Eaton Mews North
Belgravia, SW1X 8LL
£3,500 Per Week



5



5



2



Eaton Mews North



Description

A large, modern 5 bedroom 5 bathrooms mews house set over four floors, and approximately 3268 sq ft, located in the heart of Belgravia.

Quietly set on a private road in a beautiful cobbled mews, this outstanding house is arranged over four floors and boasts a fantastic, bright living and entertaining space on the first floor.

There are a further three double bedrooms, three bathrooms, and a second reception room located on the ground and lower ground floors, as well as access to the garage which has ample storage space. The additional reception area would be ideal for use as an extra TV room, gym, or office.

On the top level of the house are two generously sized bedrooms, with en-suit bathrooms, utility room, and a guest W/C.

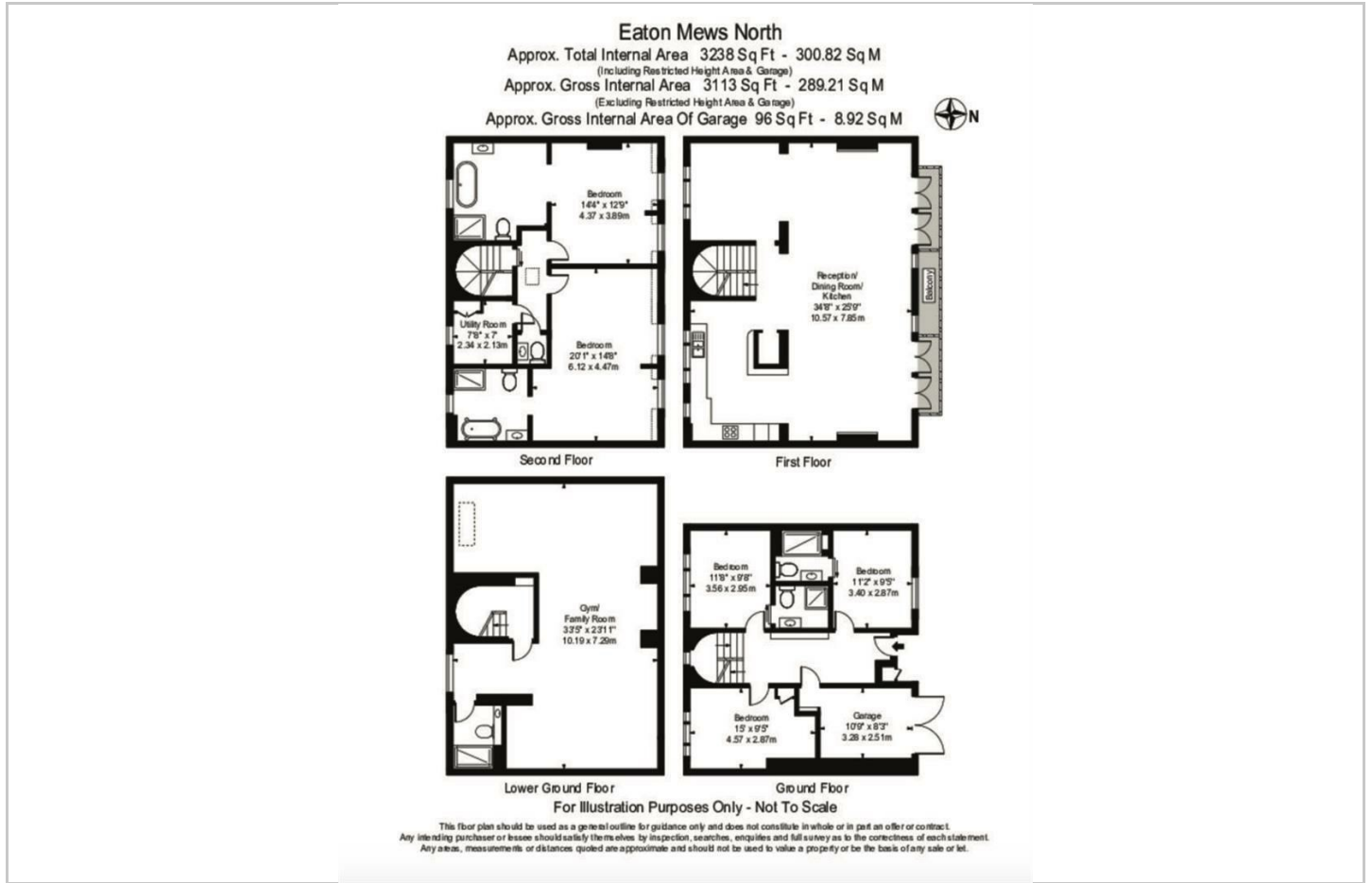
Westminster Council
Tax Band H

- 5 Bedrooms
- Belgrave Square Gardens Access (fees apply)
- 3,268 sq ft
- Furnished/Unfurnished
- Small Garage
- Double Reception Rooms
- Off Street Parking

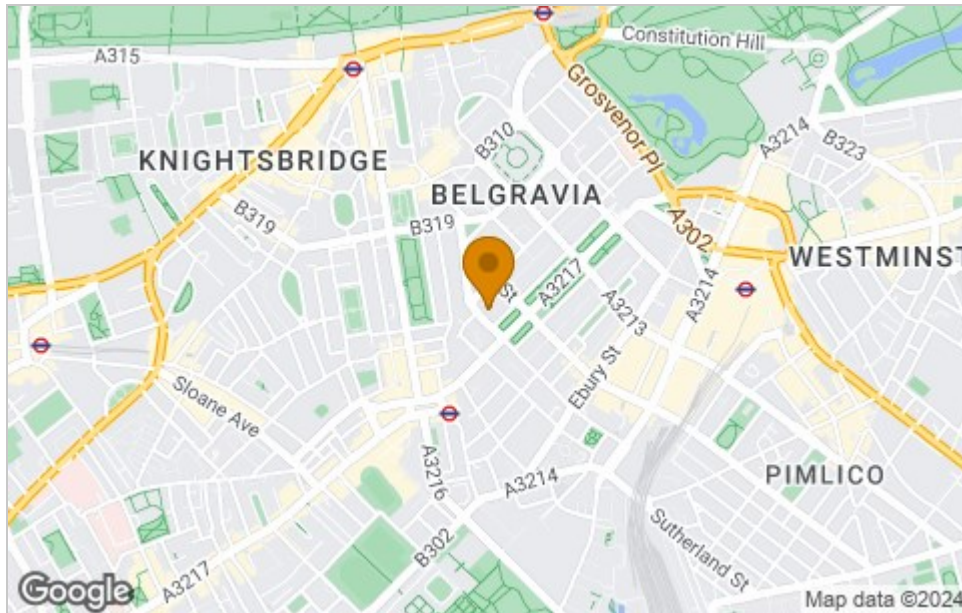




Floor Plan



Area Map



Viewing

Please contact our Knightsbridge Prime Property Office on +44 20 8051 4200 if you wish to arrange a viewing appointment for this property or require further information.

These particulars, whilst believed to be accurate are set out as a general outline only for guidance and do not constitute any part of an offer or contract. Intending purchasers should not rely on them as statements of representation of fact, but must satisfy themselves by inspection or otherwise as to their accuracy. No person in this firm's employment has the authority to make or give any representation or warranty in respect of the property.

Knightsbridge Prime Property, 1 Knightsbridge Green, Knightsbridge, London, SW1X 7QA
 Tel: +44 20 8051 4200 Email: enquiries@knightsbridgeprimeproperty.com

Energy Efficiency Graph

