

Purdie & Swan

Lettings and Property Management



Sussex Street, Winchester, SO23 8FG
Rent: £995 pcm EPC Rating: B Council Tax Band: B



Property Features

CLOSE TO STATION * EXCELLENT EPC RATING * 38 SQUARE METRES *INDIVIDUAL BIKE STORE/STORAGE*ENTRY PHONE SYSTEM * UNFURNISHED * NO PARKING * CITY CENTRE LOCATION

Description

CLOSE TO STATION A first floor, one bedroom apartment located a stone's throw from the train station and the city centre. It benefits from an individual bike store/storage shed and includes appliances. There is a Co-op store directly opposite one of the entrances to the flat. It comprises reception room with open plan kitchen which includes fridge/freezer, washer/dryer, oven and electric hob, double bedroom with built in storage and a separate shower room. The property can be entered from both Sussex Street and City Road and has double glazing, entry phone system, pressurised hot water system, electric heating and hot water and all services are mains connected. No private or permit parking available, a season ticket for one of the public car parks would be required.

Additional Information

Post Code: SO23 8FG

Available: 26th November 2025

EPC Rating: B

Deposit: 1125 (five weeks based on advertised rent)

Holding deposit: 225 (one week based on advertised rent)

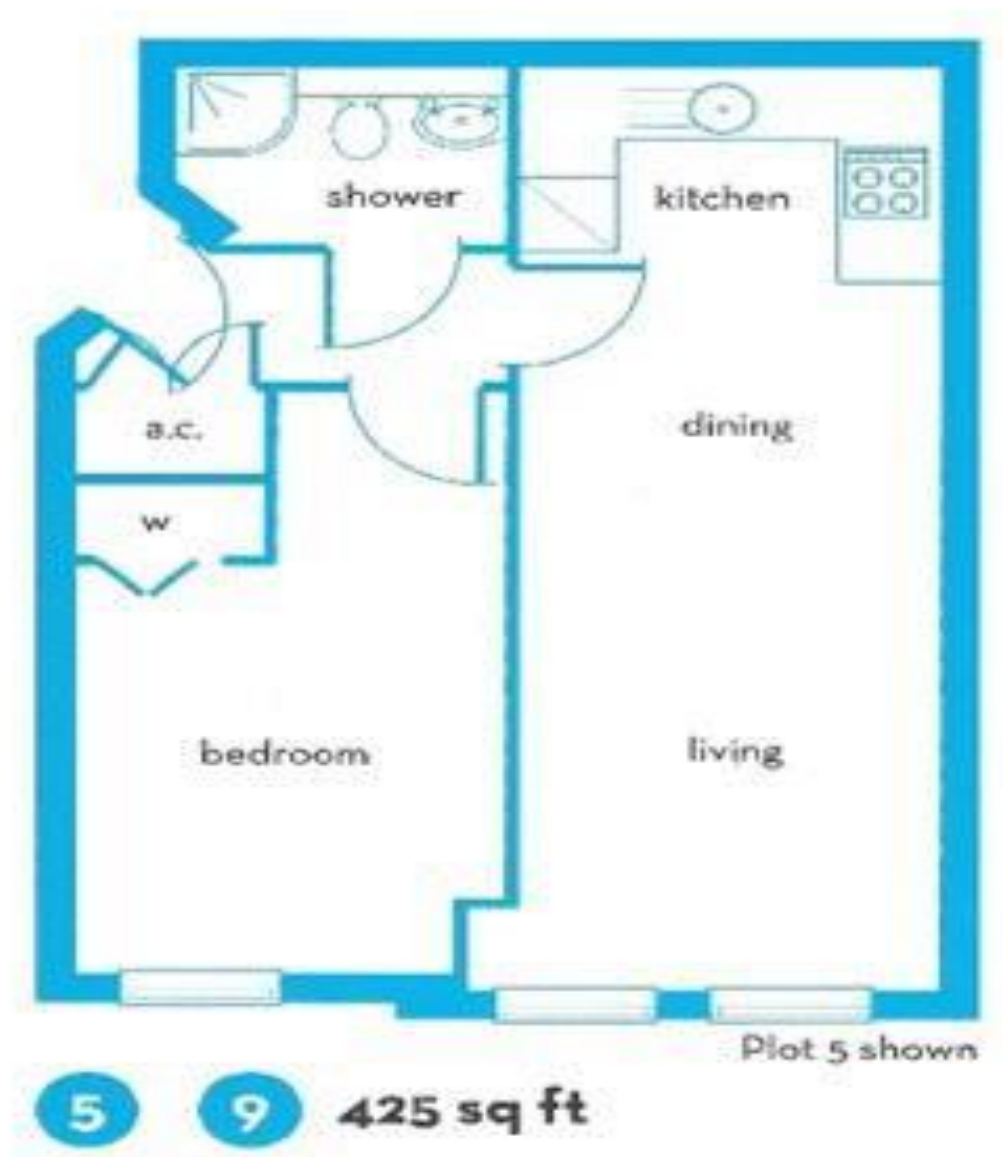
Winchester City Council: Tax band B

Unfurnished

No pets

Broadband available (refer to the Ofcom Checker for more detail)

Mobile Signal/Coverage (refer to the Ofcom Checker for more detail)



AGENTS DETAILS

T - 01962 842155

E - katherine@purdieandswan.co.uk

W - www.purdieandswan.co.uk

We wish to inform you that these particulars, which are believed to be accurate, are set out for your guidance only, and do not constitute or form part of an offer or contract. You should satisfy yourself by inspection, searches, enquiries and survey as to the correctness of each statement. All statements in these particulars are made without responsibility on the part of Purdie & Swan or the vendor or lessor. All measurements, distances and the proportions of the floor plans provided are approximate. We have not carried out a survey nor tested the services, appliances and specific fittings. Fixtures, fittings and furnishings are not included unless specifically described. It should not be assumed that the property remains as shown in the photographs. Amounts quoted are exclusive of VAT if applicable.