



Haroldslea Drive, Horley

In Excess of £800,000



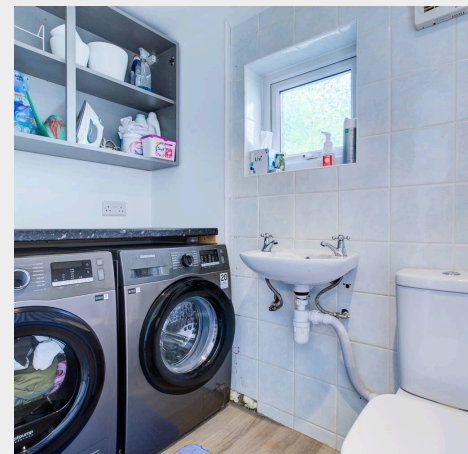
**MANSELL  
McTAGGART**  
— Trusted since 1947 —



- Three double bedrooms
- Additional study
- Garage
- Large plot spanning circa 1/3 Acre TBV
- Planning granted for significant building works
- Popular residential area of Horley off the Balcombe Road
- Close proximity to Horley train station, Gatwick airport, town centre and amenities

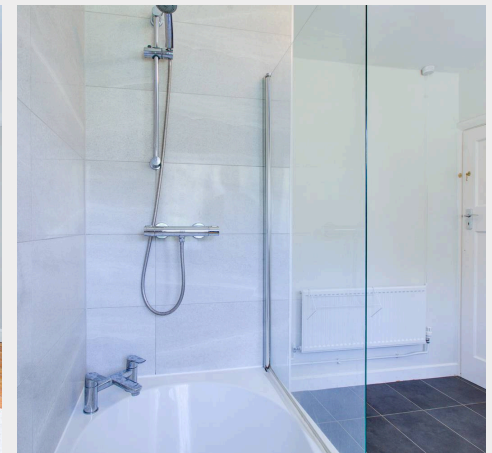
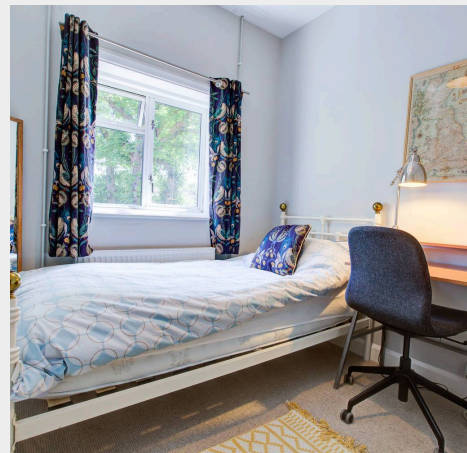
A well presented and sizable three bedroom detached home boasting a ¼ acre plot in one of Horley's most desirable roads. The property comes with planning granted (which has been started) for vast expansion. The property is also within close proximity of Horley town centre, Gatwick airport, Horley train station, school and local amenities.

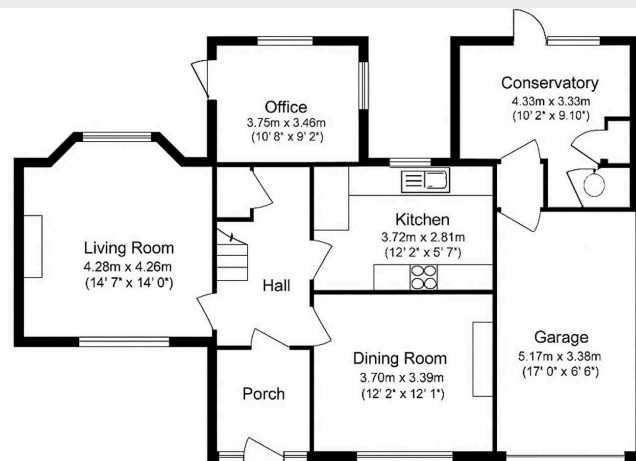
Upon approach to the property, you will see the large frontage. There is driveway parking for numerous vehicles, side access to the garden, garage and porch/door to the property.



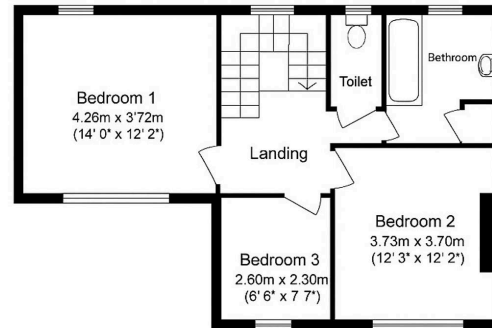
Inside, there is a spacious entrance hall with access to the living room, dining room, kitchen, study and stairs to first floor. Upstairs, a landing gives access to all three generous double bedrooms and bathroom. The entirety of the property is well dressed with modern and character touches giving the property a unique and homely feel.

Outside to rear, is a highlight of the property. The garden is vast in size and on a flat plain perfect for children and/or entertaining. There is a high reaching tree border surrounding giving a sense of privacy. A patio area abuts the property.





**Ground Floor**



**First Floor**

## Mansell McTaggart Horley

Mansell Mc Taggart, 3 Central Parade Massetts Road – RH6 7PP

01293 228228

horley@mansellmctaggart.co.uk

www.mansellmctaggart.co.uk/branch/horley

Consumer Protection from Unfair Trading Regulations 2008 We have not tested any apparatus, equipment, fixtures, fittings or services and so cannot verify that they are in working order or fit for purpose. You are advised to obtain verification from your solicitor or surveyor. References to the tenure of a property are based on information supplied by the seller. We have not had sight of the title documents, and a buyer is advised to obtain verification from their solicitor. Items shown in photographs are not included unless specifically mentioned within the sales particulars, but may be available by separate negotiation.