



Cambridge Lodge, Park Bonehurst Road, Horley, RH6 8PS

£120,000



**MANSELL
McTAGGART**
— Trusted since 1947 —





Cambridge Lodge Park Bonehurst Road, Horley RH6 8PS

Situated within the sought-after Cambridge Lodge Park development, this 2 double bedroom park home presents a remarkable living opportunity. Boasting a generous living room, an open-plan kitchen/dining room, and two well-proportioned double bedrooms, this residence offers a comfortable and inviting living space. The property features a wrap-around garden with a convenient garden storage shed, providing ample outdoor storage solutions. Additionally, an allocated parking space ensures convenience and ease of access for residents.

Located within walking distance of Horley town and train station, residents can enjoy a range of local amenities and excellent transport links. Please note that only cats are permitted on this development, and all prospective buyers must be aged 45 or over. Embrace a tranquil and secure lifestyle in this delightful park home, offering a harmonious blend of comfort and convenience within a vibrant community setting.

Site Charge Approx. - £316.98 per month reviewed 1st April annually

Additional charges - share of water Approx. £12 per month

Electricity charged Quarterly as per use

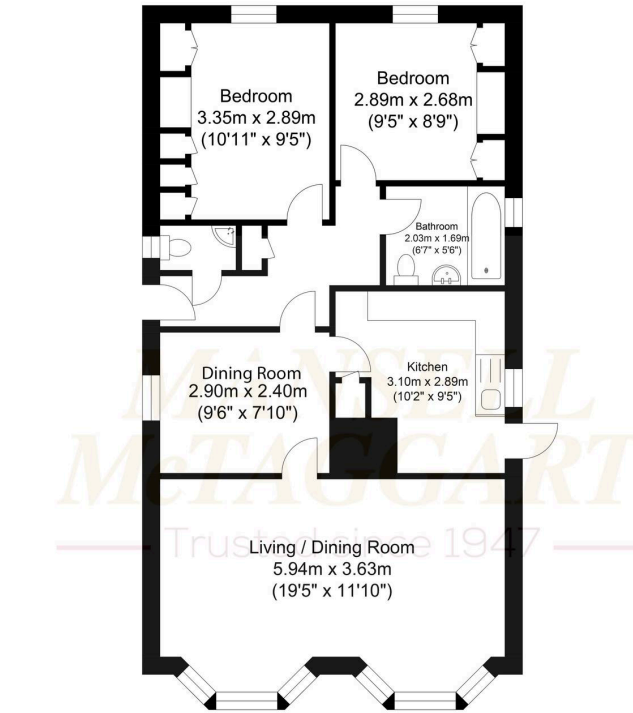
Liquid Gas to be organised direct with company

N.B. These properties are for purchasers over the age of 45.

No dogs but cats are allowed

Tenure: Leasehold

- Detached park home
- OVER 45s
- NO CHAIN



Approximate Floor Area
704.82 sq ft
(65.48 sq m)

Approximate Gross Internal Area = 65.48 sq m / 704.82 sq ft
Illustration for identification purposes only, measurements are approximate, not to scale.

Mansell McTaggart Horley

Mansell Mc Taggart, 3 Central Parade Massetts Road - RH6 7PP

01293 228228

horley@mansellmctaggart.co.uk

www.mansellmctaggart.co.uk/branch/horley