



Flat 4, Dakota House, 1 Hoadley Road

Horley



£310,000

**MANSELL
McTAGGART**
— Trusted since 1947 —



Flat 4

Dakota House, Horley

Situated within the sought-after Westvale Park development, this exceptional first-floor flat offers a contemporary living space perfect for those seeking comfort and style. Built in 2021 by renowned builders Taylor Wimpey, this property reflects modern design and sophisticated living.

Upon entering the property, you are greeted by a welcoming "L" shaped hallway with doors leading to all rooms and offering convenient storage cupboards. The fitted kitchen boasts a selection of wall and base units, complemented by a suite of integrated appliances including a washing machine, dishwasher, fridge/freezer, eye-level oven, microwave, and induction hob.

The spacious living area is ideal for relaxation or entertaining, featuring a patio door that opens up to a charming balcony, providing a tranquil setting for outdoor enjoyment. Both double bedrooms offer ample space, with the main bedroom benefiting from the added luxury of an en-suite shower room. The modern bathroom serves the property with contemporary fixtures and fittings, enhancing the overall appeal.

This property also includes the convenience of an allocated parking space, ensuring hassle-free parking for residents and guests. For added peace of mind, the remainder of the NHBC warranty is in place, offering reassurance of the quality and durability of this home.



Flat 4

Dakota House, Horley

With its prime location within the Westvale Park development, residents can enjoy easy access to local amenities, schools, and transport links, making it an ideal choice for modern living in a convenient setting. Don't miss this opportunity to make this stylish and well-appointed flat your new home. Contact us today to arrange a viewing and secure your future in this exceptional property.

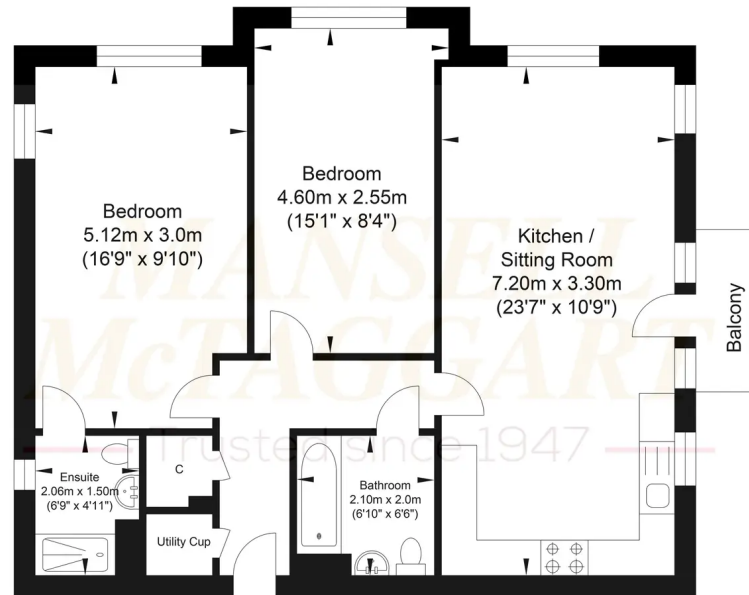
Council Tax band: C

Tenure: Leasehold

- First floor flat
- Two double bedrooms
- Built in 2021 by renowned builders Taylor Wimpey
- Spacious living area with patio door to a balcony
- Located within the popular Westvale Park development
- Fitted kitchen with integrated appliances
- Allocated parking space
- Remainder of NHBC warranty
- EPC rating B/Council tax band C
- Complete chain



Hoadley Road



First Floor
Approximate Floor Area
717.52 sq ft
(66.66 sq m)



Approximate Gross Internal Area = 66.66 sq m / 717.52 sq ft
Illustration for identification purposes only, measurements are approximate, not to scale.

Mansell McTaggart Horley

Mansell Mc Taggart, 3 Central Parade Massetts Road - RH6 7PP

01293 228228

horley@mansellmctaggart.co.uk

www.mansellmctaggart.co.uk/branch/horley