

Offers In The Region Of £350,000

Jayman
www.jayman.co.uk

Estate Agents



Hazelmere Drive

Burntwood, WS7 4YP

Hazelmere Drive, Burntwood, WS7 4YP

Jayman Estate Agents are delighted to offer this stunning two bedroom detached bungalow which has been delightfully renovated by the current owners. Set behind a gated driveway the property forms part of a private development of bungalows at the end of Hazelmere Drive, Burntwood. The accommodation comprises 2 bedrooms, refitted bathroom, refitted kitchen, living room and fabulous conservatory. The garage has been converted to provide a utility area and useful storage space. Externally there is a lovely rear garden and driveway to the front. Viewing highly recommended to appreciate the property's finish and secluded location.

Living Room 15'8" x 9'2" (4.8 x 2.8)

Kitchen 13'5" x 9'6" (4.1 x 2.9)

Bedroom 9'2" x 11'5" (2.8 x 3.5)

Bedroom 9'6" x 11'5" (2.9 x 3.5)

Bathroom 6'6" x 5'10" (2 x 1.8)

Conservatory 15'8" x 12'9" (4.8 x 3.9)

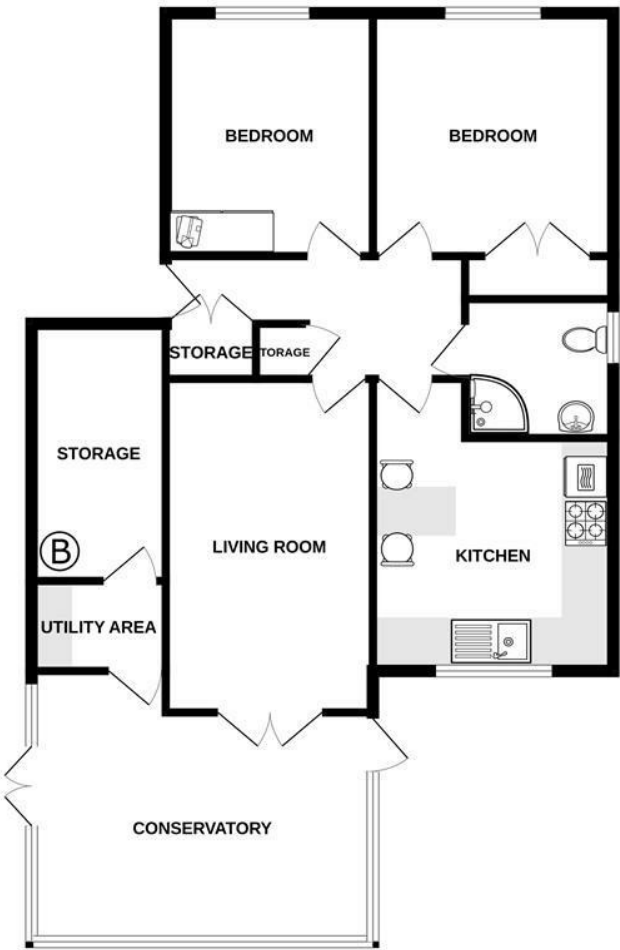
Utility (part of garage) 3'11" x 8'6" (1.2 x 2.6)

Store (part of garage) 8'6" x 12'1" (2.6 x 3.7)



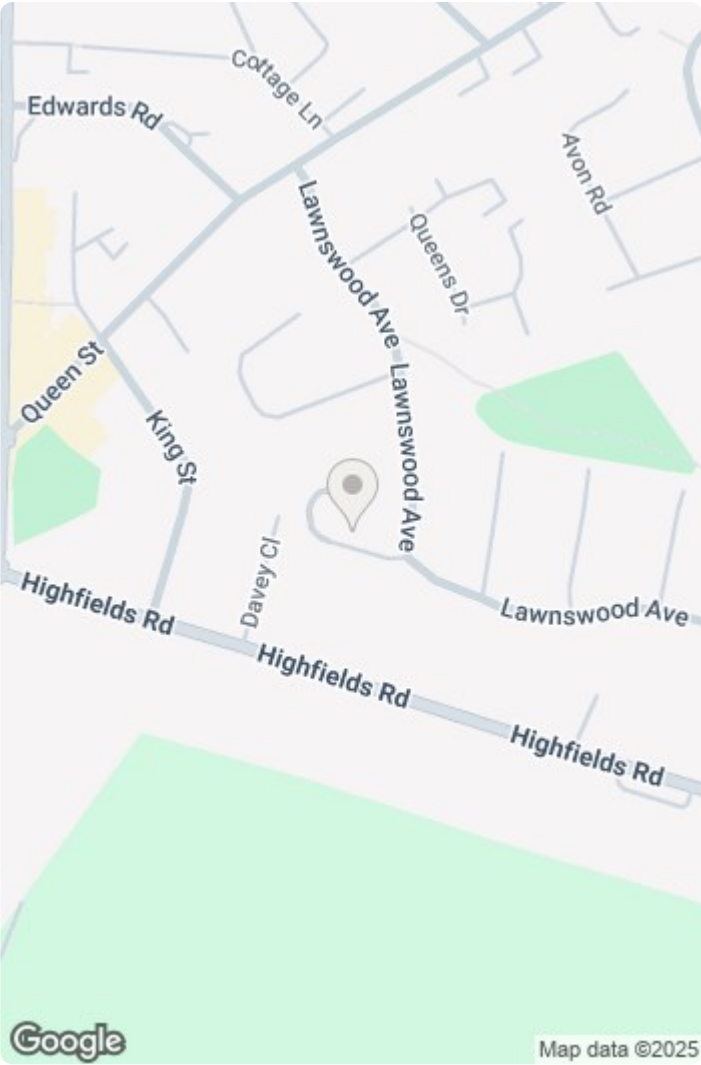
REQUIRE A MORTGAGE? Our independent advisor can compare "whole of market" to help find the best mortgage to suit your circumstances. Please call 01543 416 567 for a free mortgage quote including some deals only available through our network. **LEGAL CONVEYANCING** Jayman Conveyancing provides fast efficient low cost legal work with a no sale-no fee guarantee. Call 01543 416 567. **AGENTS DESCRIPTIONS** These details imply the opinion of the agent at the time these details were prepared and are subjective. It may be that the purchaser's opinion differs. **VIEWING ARRANGEMENTS** By appointment only with Jayman on 01543 416 567 **COUNCIL TAX** Please refer to www.voa.gov.uk for this information. **DESCRIPTIONS AND MEASUREMENTS** All measurements are approximate and some may be maximum on irregular walls. The plan shows the approximate layout of the rooms to show the inter relationship of relationship of one room to another but is not necessarily to scale. **CONSENTS** We have not had sight of any relevant building regulations, guarantees or planning consents and all relevant documentation pertaining to this property should be checked by your legal advisor before exchanging contracts.

GROUND FLOOR



A TWO BEDROOM DETACHED BUNGALOW

Whilst every attempt has been made to ensure the accuracy of the floorplan contained here, measurements of doors, windows, rooms and any other items are approximate and no responsibility is taken for any error, omission or mis-statement. This plan is for illustrative purposes only and should be used as such by any prospective purchaser. The services, systems and appliances shown have not been tested and no guarantee as to their operability or efficiency can be given.
Made with Metropix ©2025



Energy Efficiency Rating			Environmental Impact (CO ₂) Rating		
Very energy efficient - lower running costs	Current	Potential	Very environmentally friendly - lower CO ₂ emissions	Current	Potential
92-100 A			10-15 A		
81-91 B			16-20 B		
69-80 C			21-25 C		
55-68 D			26-30 D		
43-54 E			31-35 E		
31-42 F			36-40 F		
13-30 G			41-45 G		
Not energy efficient - higher running costs			Not environmentally friendly - higher CO ₂ emissions		
England & Wales	EU Directive 2002/91/EC		England & Wales	EU Directive 2002/91/EC	

We endeavour to make our sales details accurate and reliable but they should not be relied on as statements or representations of fact and they do not constitute any part of an offer or contract. The seller does not make any representation or give any warranty in relation to the property and we have no authority to do so on behalf of the seller. Services, fittings and equipment referred to in the sales details have not been tested (unless otherwise stated) and no warranty can be given as to their condition. We would strongly recommend that all information, which we provide, about the property is verified by yourself or your advisers.

