

Asking Price £169,950

Jayman
www.jayman.co.uk

Estate Agents



Garrick Close

Staffordshire, WS13 7DS

Garrick Close, Staffordshire, WS13 7DS

Jayman offer for sale a spacious two bedroom ground floor apartment on Garrick Close.

Comprising of; Entrance Hallway, Large Living Room, Modern Fitted Kitchen, Bathroom, Two Bedrooms, Garage and well maintained communal gardens to rear.

Garrick Close

Ground floor two bedroom apartment comprising of;

Entrance Hallway

Good sized entrance hallway with window to rear and door to;

Living Room 13'5" x 11'11" (4.11 x 3.65)

Spacious living room with large window to fore and doors leading to the Fitted Kitchen and through to the inner hallway.

Kitchen 10'0" x 7'6" (3.05 x 2.31)

Modern fitted kitchen with a range of storage cupboards, cooker with extractor, space and plumbing for appliances, cupboard houses the boiler, window to rear gardens.

Inner hallway

With useful storage cupboard and doors leading to;

Bedroom 1 8'5" x 12'0" (2.57 x 3.66)

Double bedroom with window to fore and built in wardrobes.

Bedroom 2 9'11" x 6'7" (3.03 x 2.01)

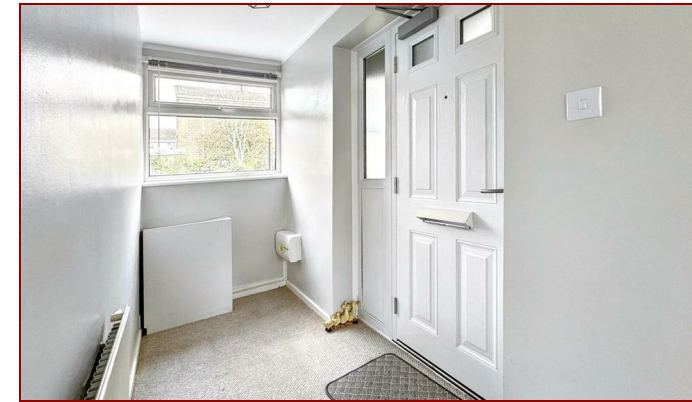
Double bedroom with built in wardrobes and window to rear.

Bathroom

With suite comprising of bath with shower over, wash hand basin and WC.

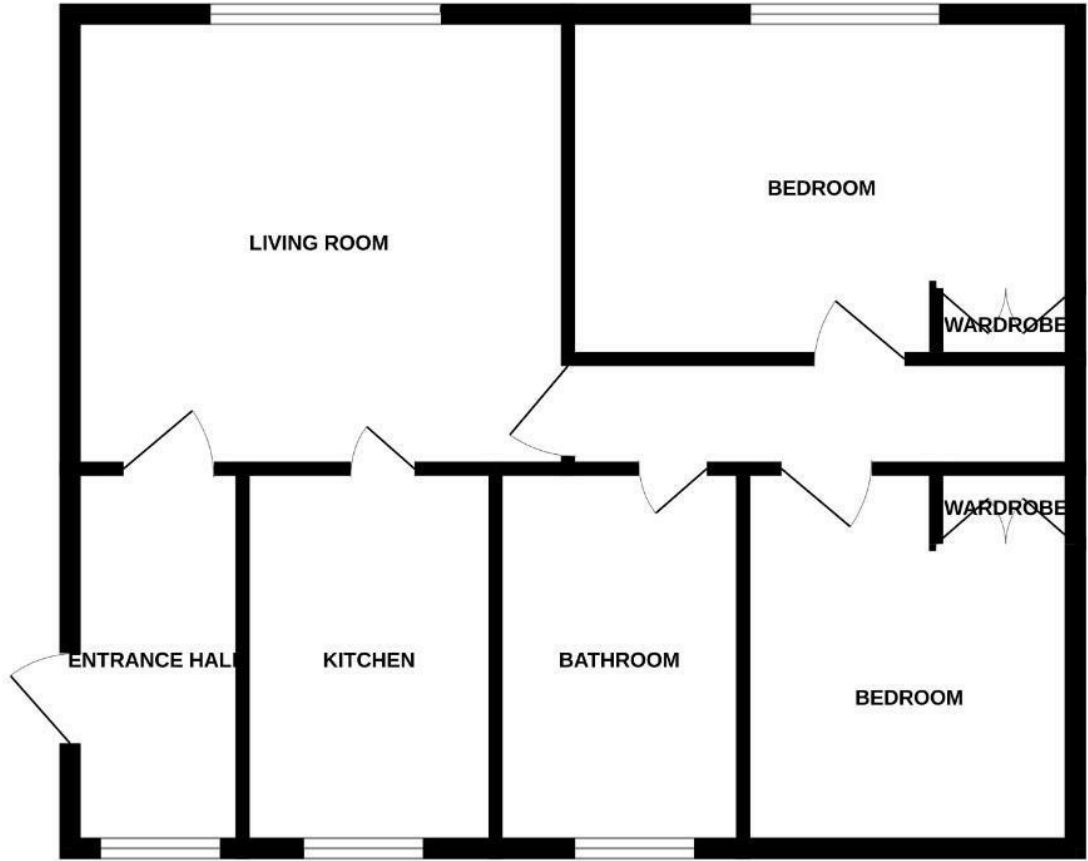
Garage

Single garage.

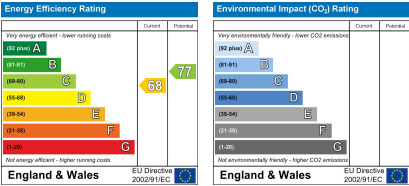
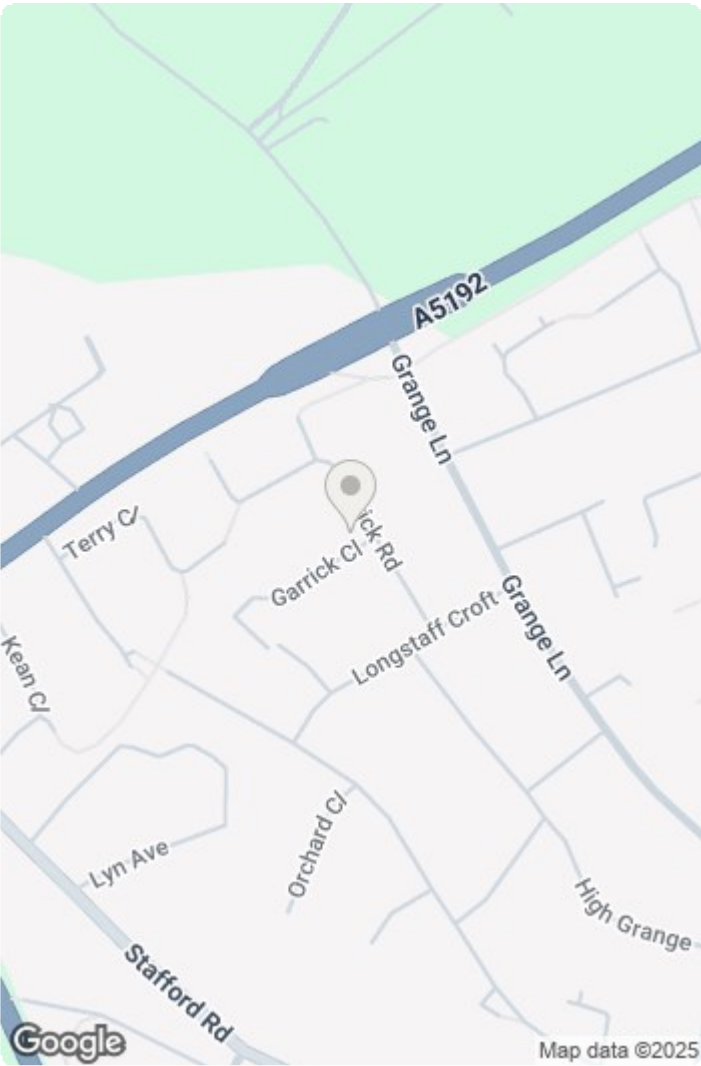


REQUIRE A MORTGAGE? Our independent advisor can compare "whole of market" to help find the best mortgage to suit your circumstances. Please call 01543 416 567 for a free mortgage quote including some deals only available through our network. **LEGAL CONVEYANCING** Jayman Conveyancing provides fast efficient low cost legal work with a no sale-no fee guarantee. Call 01543 416 567. **AGENTS DESCRIPTIONS** These details imply the opinion of the agent at the time these details were prepared and are subjective. It may be that the purchaser's opinion differs. **VIEWING ARRANGEMENTS** By appointment only with Jayman on 01543 416 567 **COUNCIL TAX** Please refer to www.voa.gov.uk for this information. **DESCRIPTIONS AND MEASUREMENTS** All measurements are approximate and some may be maximum on irregular walls. The plan shows the approximate layout of the rooms to show the inter relationship of relationship of one room to another but is not necessarily to scale. **CONSENTS** We have not had sight of any relevant building regulations, guarantees or planning consents and all relevant documentation pertaining to this property should be checked by your legal advisor before exchanging contracts.

GROUND FLOOR



Whilst every attempt has been made to ensure the accuracy of the floorplan contained here, measurements of doors, windows, rooms and any other items are approximate and no responsibility is taken for any error, omission or mis-statement. This plan is for illustrative purposes only and should be used as such by any prospective purchaser. The services, systems and appliances shown have not been tested and no guarantee as to their operability or efficiency can be given.
Made with Metropix ©2023



We endeavour to make our sales details accurate and reliable but they should not be relied on as statements or representations of fact and they do not constitute any part of an offer or contract. The seller does not make any representation or give any warranty in relation to the property and we have no authority to do so on behalf of the seller. Services, fittings and equipment referred to in the sales details have not been tested (unless otherwise stated) and no warranty can be given as to their condition. We would strongly recommend that all information, which we provide, about the property is verified by yourself or your advisers.

