

Offers In The Region Of £425,000

Jayman
www.jayman.co.uk

Estate Agents



Yew Tree Avenue

Lichfield, WS14 9UA

Yew Tree Avenue, Lichfield, WS14 9UA

Jayman offer for sale this superbly presented detached property on Boley Park.

The property has been altered with stud walls to create two large bedrooms but this can easily be reversed to create 3 to suit the buyer.

8 Yew Tree Avenue

This spacious property has been altered internally with stud walls upstairs into a two bedroom with dressing room and ensuite (to both bedrooms). This could be reversed easily to create a 3 bed with ensuite to suit the buyer.

Porch

Entrance porch leading to Lounge

Lounge 19'10" x 11'6" (6.06 x 3.52)

Full width lounge with window to fore, feature fireplace and opening to the Dining Room to rear.

Guest WC

Off the lounge with suite comprising of wash hand basin and WC.

Dining Room 17'10" x 11'6" (5.44 x 3.53)

Great sized dining area with double doors to rear garden, stairs to first floor and door to Kitchen.

Kitchen 7'11" x 11'7" (2.43 x 3.55)

With a range of storage units, sink and drainer, double oven, window to rear and useful pantry cupboard.

Utility 14'9" x 7'10" (4.51 x 2.40)

Good sized utility with space and plumbing for appliances and leading to Conservatory to the rear and to storage room (with tradesman entrance) to the fore.

Conservatory 17'7" x 13'1" (5.38 x 4.01)

Large conservatory wrapping around the rear of the property and accessed from the Dining Room and also from the Utility rooms. With blinds mounted to the ceiling glass to provide shade and door to rear garden.

First Floor

Landing with doors to;

Bedroom 1 9'2" x 18'5" (2.81 x 5.62)

Spacious double bedroom with built in bedroom furniture, windows to fore and door to large dressing room.

Dressing Room (Bed 3) 9'10" x 7'4" (3 x 2.26)

Large walk in dressing room (previously bedroom 3) with windows to fore.

Bedroom 2 15'6" x 9'11" (4.73 x 3.04)

Spacious bedroom with built in wardrobes, windows to rear and opening into dressing area with door to ensuite.

Dressing Area 8'11" x 7'9" (2.74 x 2.37)

Good sized dressing area with door to ensuite.

Ensuite

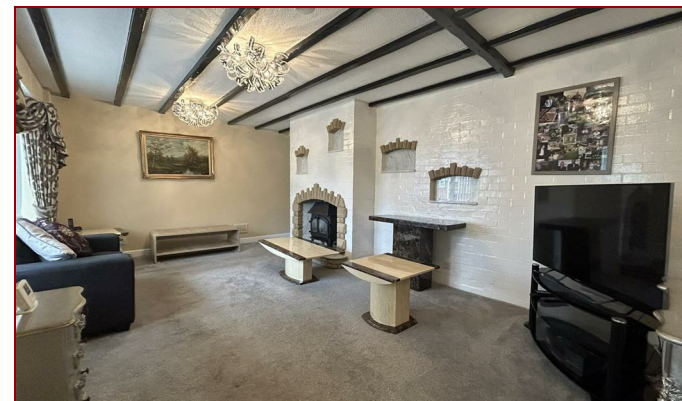
Modern fitted en-suite with walk in shower cubicle, wash hand basin and WC.

Bathroom

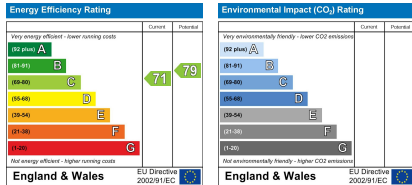
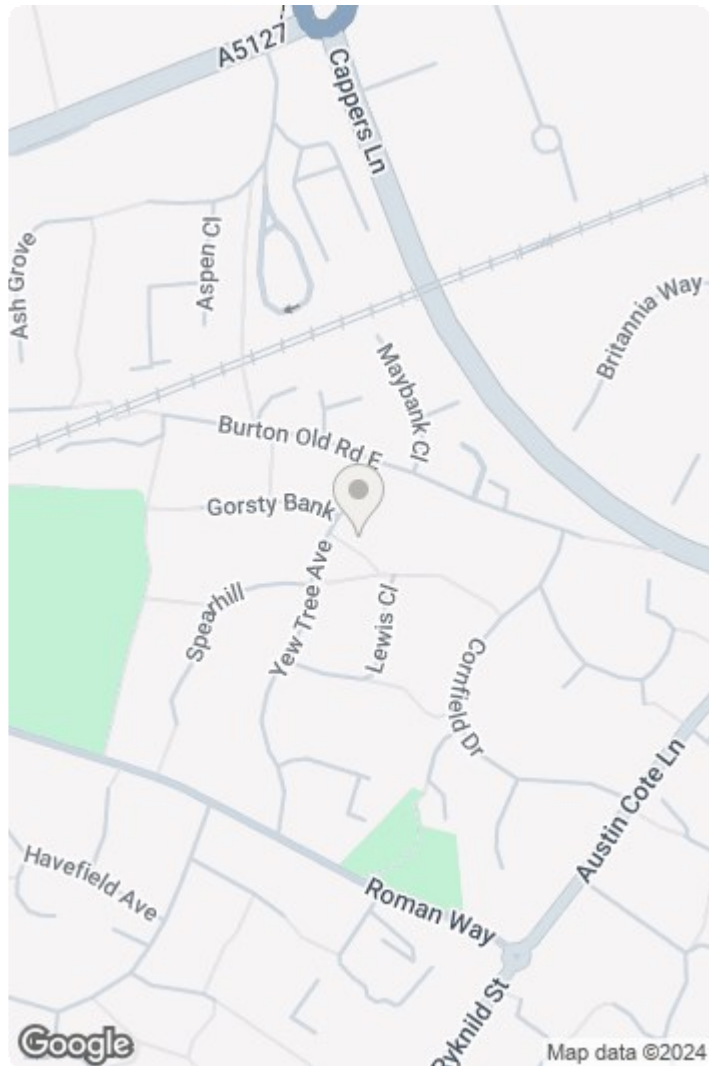
With suite comprising of corner shower cubicle, bath, his and hers wash hand basins and WC.

Garden

Comprising of decked patio area and garden areas with part brick part glass greenhouse to the rear.



REQUIRE A MORTGAGE? Our independent advisor can compare "whole of market" to help find the best mortgage to suit your circumstances. Please call 01543 416 567 for a free mortgage quote including some deals only available through our network. **LEGAL CONVEYANCING** Jayman Conveyancing provides fast efficient low cost legal work with a no sale-no fee guarantee. Call 01543 416 567. **AGENTS DESCRIPTIONS** These details imply the opinion of the agent at the time these details were prepared and are subjective. It may be that the purchaser's opinion differs. **VIEWING ARRANGEMENTS** By appointment only with Jayman on 01543 416 567 **COUNCIL TAX** Please refer to www.voa.gov.uk for this information. **DESCRIPTIONS AND MEASUREMENTS** All measurements are approximate and some may be maximum on irregular walls. The plan shows the approximate layout of the rooms to show the inter relationship of relationship of one room to another but is not necessarily to scale. **CONSENTS** We have not had sight of any relevant building regulations, guarantees or planning consents and all relevant documentation pertaining to this property should be checked by your legal advisor before exchanging contracts.



We endeavour to make our sales details accurate and reliable but they should not be relied on as statements or representations of fact and they do not constitute any part of an offer or contract. The seller does not make any representation or give any warranty in relation to the property and we have no authority to do so on behalf of the seller. Services, fittings and equipment referred to in the sales details have not been tested (unless otherwise stated) and no warranty can be given as to their condition. We would strongly recommend that all information, which we provide, about the property is verified by yourself or your advisers.

