

Asking Price £379,950

Jayman  
www.jayman.co.uk

Estate Agents



Welwyndale Road

Sutton Coldfield, West Midlands, B72 1AW



# Welwyndale Road, Sutton Coldfield, West Midlands B72 1AW

Jayman offer for sale this 3 bedroom traditional semi detached house on Welwyndale Road, being walking distance from local shops and transport links.

## Hallway

With doors leading to two reception rooms, stairs to first floor and Kitchen to rear.

## Lounge 10'6" x 13'5" (3.21 x 4.09)

With delightful bay window to fore.

## Dining Room 10'5" x 14'0" (3.18 x 4.29)

With doors to rear garden.

## Fitted kitchen 10'4" x 8'11" (3.16 x 2.72)

Modern fitted kitchen with space for appliances and door to side garden and to Utility (with WC)

## First floor

With doors leading to

## Bedroom 1 10'4" x 13'5" max (3.15 x 4.09 max)

Double bedroom with bay window to fore.

## Bedroom 2 10'0" x 14'3" max (3.07 x 4.35 max)

Double bedroom with window to rear.

## Bedroom 3 6'8" x 8'11" (2.05 x 2.72)

Single bedroom with window to rear

## Bathroom

Refitted bathroom suite comprising bath with shower above, wash hand basin and WC.

## Rear Garden

Pleasant rear garden.

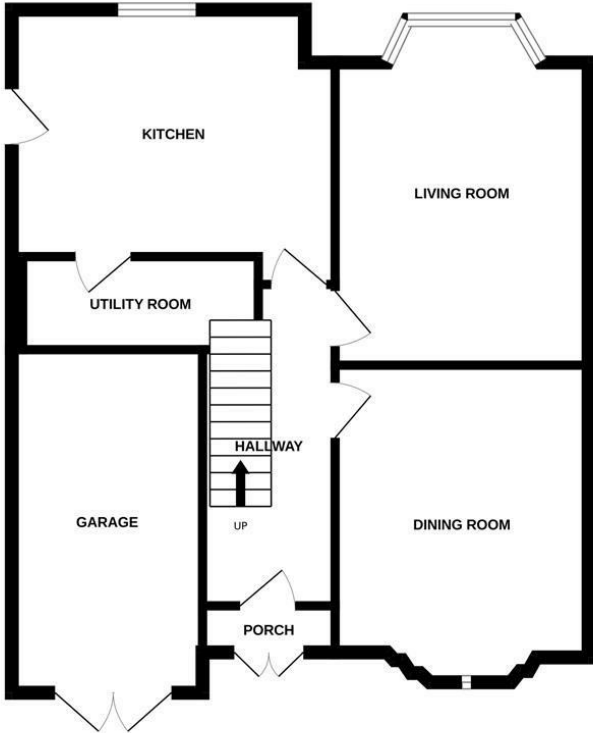
## Garage

Driveway leads to integral garage.

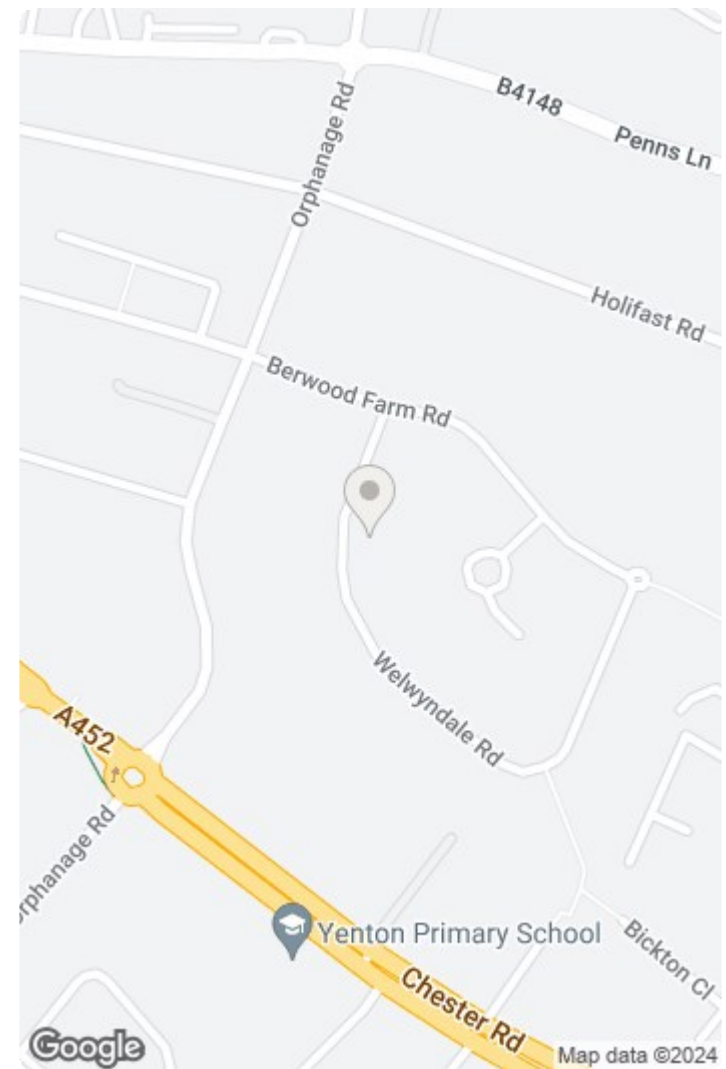
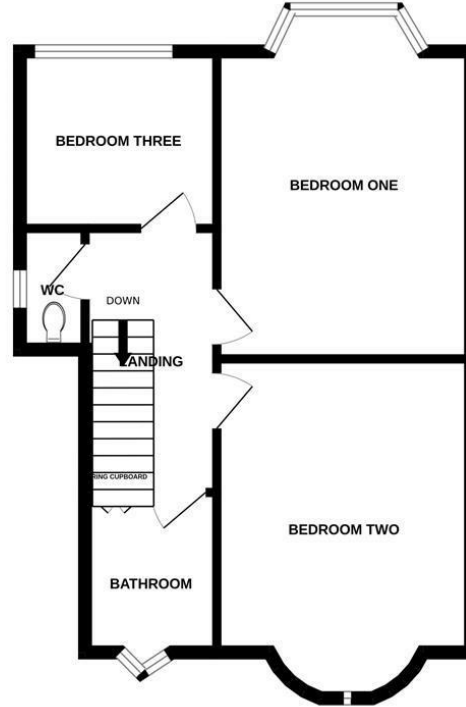


**REQUIRE A MORTGAGE?** Our independent advisor can compare "whole of market" to help find the best mortgage to suit your circumstances. Please call 01543 416 567 for a free mortgage quote including some deals only available through our network. **LEGAL CONVEYANCING** Jayman Conveyancing provides fast efficient low cost legal work with a no sale-no fee guarantee. Call 01543 416 567. **AGENTS DESCRIPTIONS** These details imply the opinion of the agent at the time these details were prepared and are subjective. It may be that the purchaser's opinion differs. **VIEWING ARRANGEMENTS** By appointment only with Jayman on 01543 416 567 **COUNCIL TAX** Please refer to [www.voa.gov.uk](http://www.voa.gov.uk) for this information. **DESCRIPTIONS AND MEASUREMENTS** All measurements are approximate and some may be maximum on irregular walls. The plan shows the approximate layout of the rooms to show the inter relationship of relationship of one room to another but is not necessarily to scale. **CONSENTS** We have not had sight of any relevant building regulations, guarantees or planning consents and all relevant documentation pertaining to this property should be checked by your legal advisor before exchanging contracts.

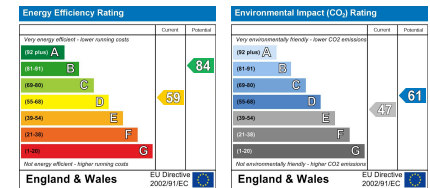
GROUND FLOOR



1ST FLOOR



Whilst every attempt has been made to ensure the accuracy of the floorplan contained here, measurements of doors, windows, rooms and any other items are approximate and no responsibility is taken for any error, omission or mis-statement. This plan is for illustrative purposes only and should be used as such by any prospective purchaser. The services, systems and appliances shown have not been tested and no guarantee as to their operability or efficiency can be given.  
Made with Metropix ©2024



We endeavour to make our sales details accurate and reliable but they should not be relied on as statements or representations of fact and they do not constitute any part of an offer or contract. The seller does not make any representation or give any warranty in relation to the property and we have no authority to do so on behalf of the seller. Services, fittings and equipment referred to in the sales details have not been tested (unless otherwise stated) and no warranty can be given as to their condition. We would strongly recommend that all information, which we provide, about the property is verified by yourself or your advisers.



