



Murray Street, NW1

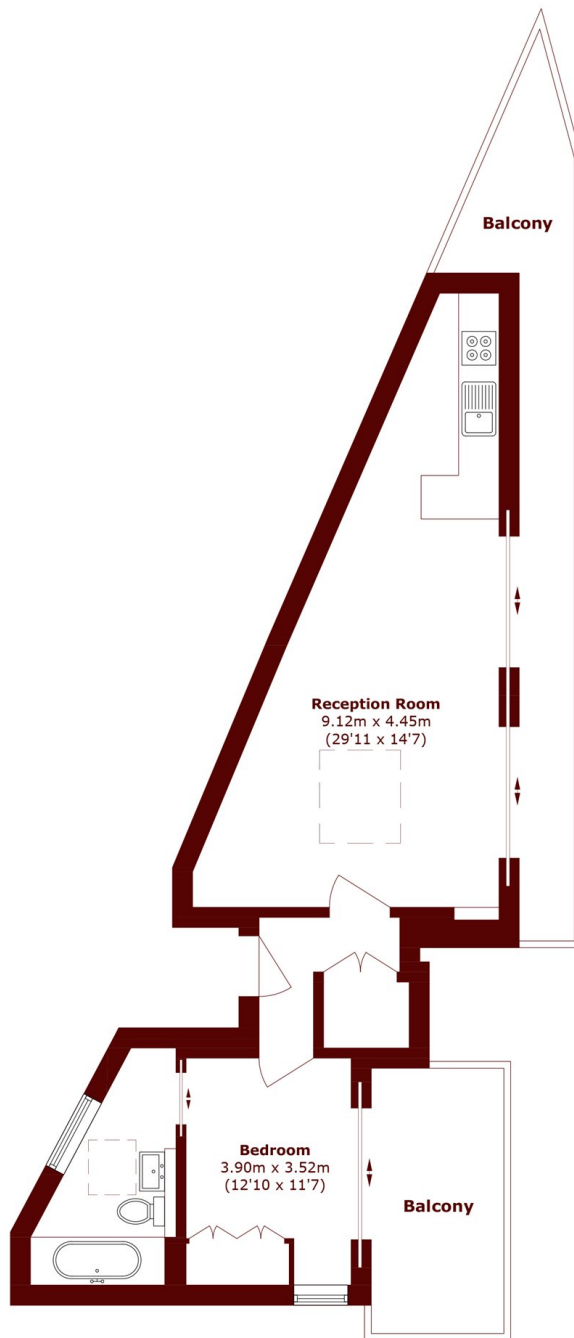
£500,000



- Large Apartment
- Lift Access

- Lease of 114 Years
- Two Separate Terraces

- Top Floor
- Chain Free



Total area (approx.): 51.6 sq. m (555.4 sq. ft)
Balcony area (approx.): 20.1 sq. m (216.3 sq. ft)

Marsh & Parsons Camden

27 Parkway, London, NW1
7PN
020 7244 2200