



Kingsdown Road, N19

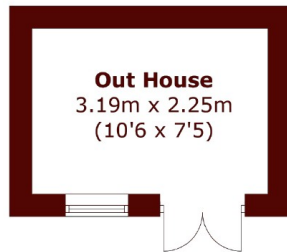
£775,000



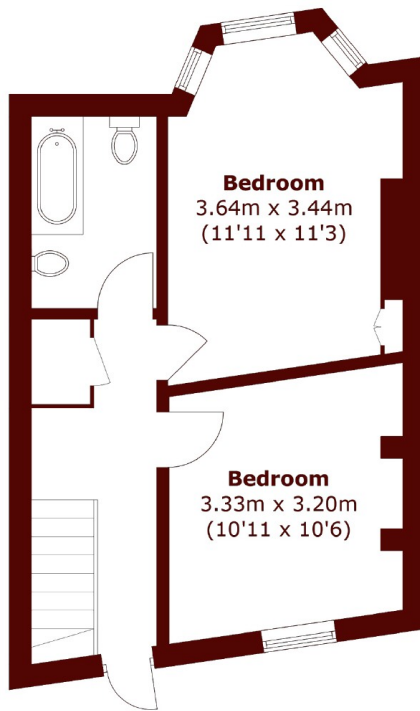
- Two Double Bedrooms
- Share of Freehold

- Private Garden
- Home Office Space

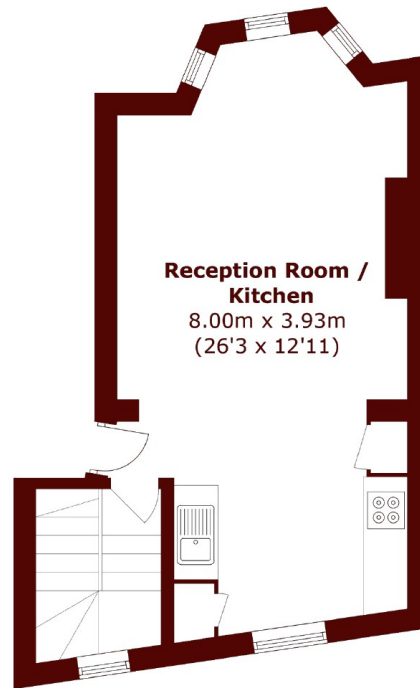
- Open Plan Living Room
- New Boiler



(Not Shown In Actual
Location / Orientation)



Lower Ground Floor



Ground Floor

Total area (approx.): 70.3 sq. m (756.6 sq. ft)
Out House area (approx.): 7.4 sq. m (79.6 sq. ft)

Marsh & Parsons Camden

27 Parkway, London, NW1
7PN
020 7244 2200