

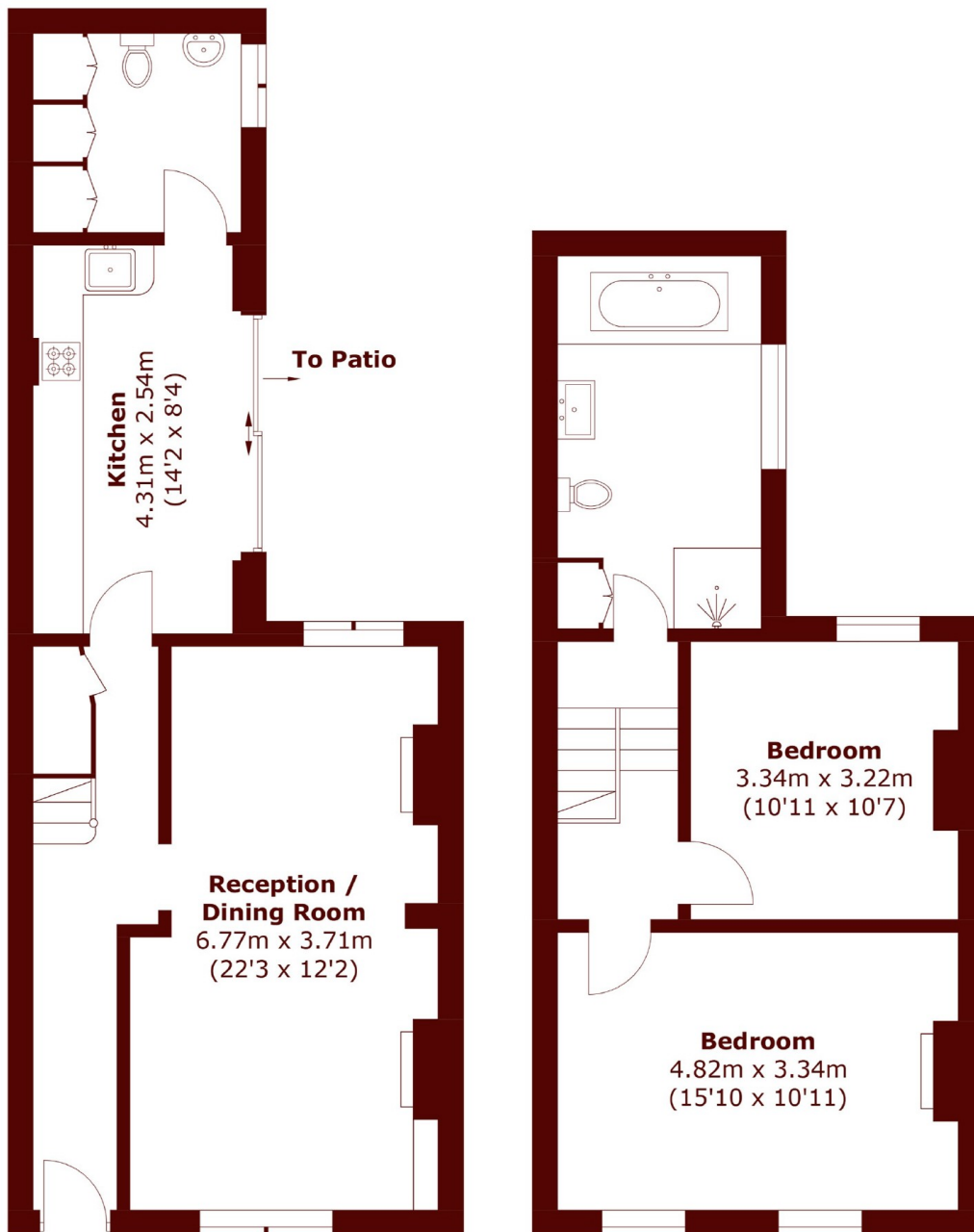


## Prowse Place, NW1

£1,100,000



- No Onward Chain
- Two Reception Rooms
- Close to Amenities
- Two Double Bedrooms
- Courtyard Garden
- Turn Key Condition



**Ground Floor**

**First Floor**

Total area (approx.): 96.2 sq. m (1,035.4 sq. ft)

**Marsh & Parsons Camden**

27 Parkway, London, NW1

7PN

020 7244 2200